

## ThinPrint for Windows Small Business Server

Printing from Remote Web Workplace

## ThinPrint in a nutshell

Cortado AG  
Alt-Moabit 91 a/b  
10559 Berlin  
Germany/Alemania

Cortado, Inc.  
20006 Detroit Road, Suite 303  
Cleveland, OH 44116  
USA/EEUU

Cortado, Inc.  
7600 Grandview Avenue, Suite 200  
Denver, Colorado 80002  
USA/EEUU

Cortado Pty. Ltd.  
Level 20, The Zenith Centre, Tower A  
821 Pacific Highway, Chatswood, NSW 2067  
Australia



E-mail: [info@team.cortado.com](mailto:info@team.cortado.com)

Web: [www.thinprint.com](http://www.thinprint.com)

Issued: January 16, 2012 (v24)

## Introduction

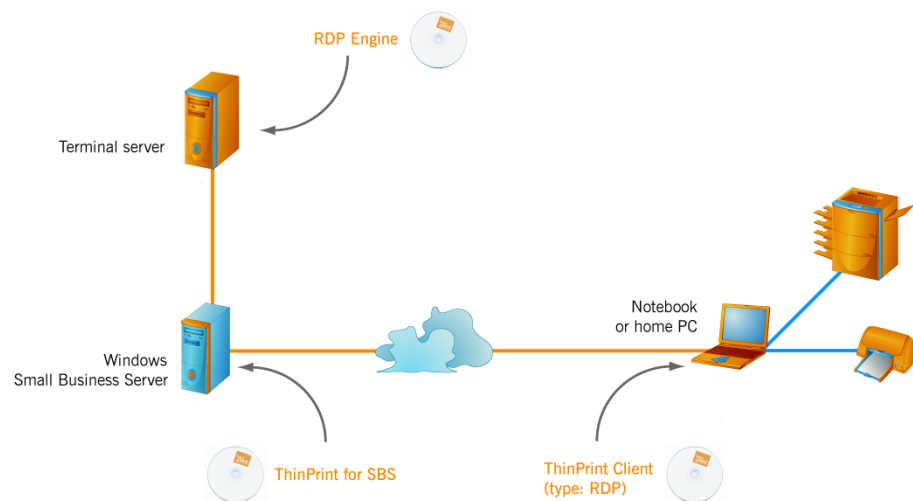
The **Windows Small Business Server (SBS)** and its **Remote Web Workplace** function enables all employees to securely access company computers over the internet, making it easy to work from home or while on the go. You can always work on the same desktop and in the same computer environment (Illus. 1 and 2).

ThinPrint also makes printing from the Remote Web Workplace quick and easy. The print data are transmitted at high compression and thus reach the printer faster – with a notebook while on the go or on a private PC at home. And with DRIVER FREE PRINTING technology it doesn't matter which printer you use at home because neither the Small Business Server nor the terminal server or the workplace computer in the company requires a printer driver.

Simply launch the Web browser on the notebook or the home PC and go to the Web address of your company's Small Business Server.

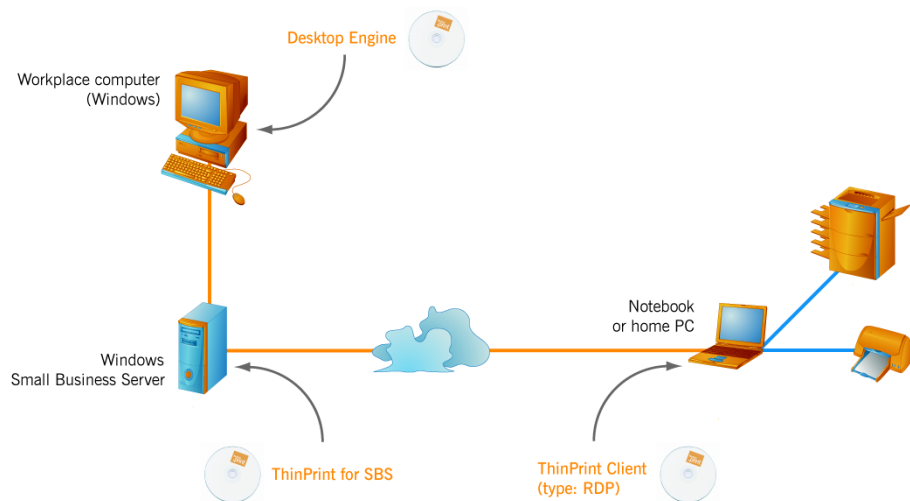
To make your computer environment ThinPrint capable, install the following ThinPrint components (all are Plug & Play):

- **ThinPrint RDP Engine** on every terminal server (Illus. 1) or **ThinPrint Desktop Engine** on every workplace computer (Illus. 2)
- **ThinPrint for SBS** or **ThinPrint for SBS x64** (SBS 2003 and 2008 only)  
This component is not needed for SBS 2011.
- **ThinPrint Client (RDP type)**  
on the notebooks or home PCs<sup>1</sup> (i. e. remote clients)



**Illus. 1** Installing ThinPrint components in an SBS 2008 environment with a terminal server as Remote Web Workplace (example)

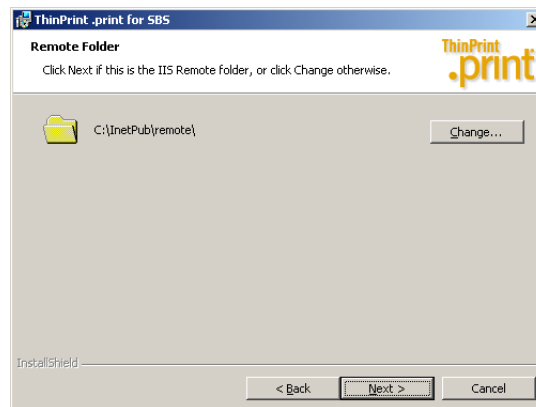
<sup>1</sup> Alternative: thin clients with embedded ThinPrint Client (RDP type)



**Illus. 2** Installing ThinPrint components in an SBS 2008 environment with a workplace computer as Remote Web Workplace (example)

## Installing the ThinPrint components

- Step 1**
- Provide a **Windows Small Business Server 2003, 2008 or 2011**.
  - Set up the Remote Web Workplace for the users (ADD A NEW USER ACCOUNT or SET UP NETWORK COMPUTER ACCESS in the Server Management of the SBS). Enable also USER CAN ACCESS REMOTE WEB WORKPLACE.
- Step 2**
- Download the product package **RDP Engine** or **Desktop Engine** from the ThinPrint web site. It contains the ThinPrint components listed above.
- Step 3**
- Install the **RDP Engine** or **Desktop Engine** software on the terminal servers (Windows 2008 or 2003) or workplace computers (Windows 7, Vista or XP) with the **setup program** and follow the instructions of the setup program. More information about the installation can be found in the “ThinPrint RDP Engine” manual (free download at [www.thinprint.com](http://www.thinprint.com) → PRODUCTS → OVERVIEW → RDP ENGINE → DEMO VERSION) or in the “ThinPrint Desktop Engine” manual (... → DESKTOP ENGINE → DEMO VERSION).
- Step 4**
- Select the file **ThinPrint .print for SBS.msi** on an SBS 2003 or the file **ThinPrint .print for SBS\_x64.msi** on an SBS 2008. If required, confirm the path to the IIS Remote directory (where the file TSWEB.ASPX is located), or enter a different one (Illus. 3). **With SBS 2011, you will not need this component.**

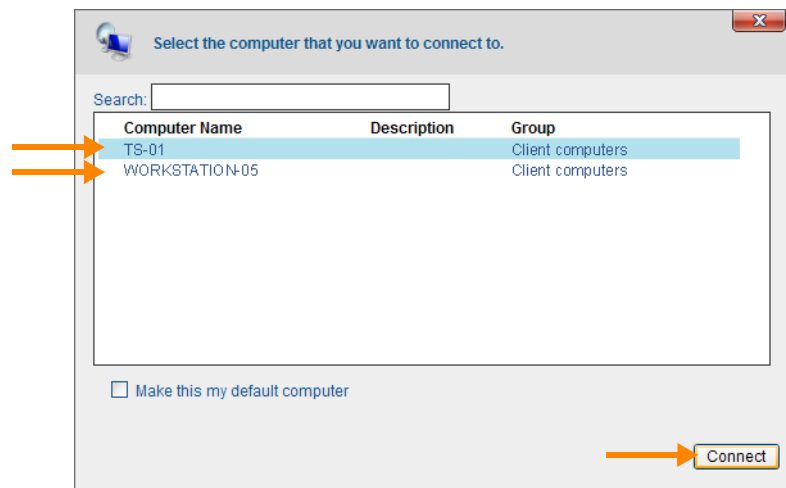


Illus. 3 Path to the IIS Remote directory (default: c:\inetpub\remote)

- Step 5**
- Install the **ThinPrint Client** (RDP type) on the notebooks or home PCs (required operating system: Windows 7, Vista or XP). More information about the installation can be found in the manual of the respective ThinPrint Client (see [www.thinprint.com](http://www.thinprint.com) → PRODUCTS → OVERVIEW → RDP ENGINE → MANUALS). Alternative thin clients: At [www.thinprint.com/Products/Overview/Supportedthinclients.aspx](http://www.thinprint.com/Products/Overview/Supportedthinclients.aspx) you will find thin clients with embedded RDP type of ThinPrint Client.
  - **With SBS 2003 and 2008**, simply launch the Web browser on the notebook or the home PC and go to the Web address of your company's Small Business Server. Best use the internet domain name of the SBS, for example:  
`https://remote.servername.com`  
Log on and select CONNECT TO A COMPUTER (Illus. 4).  
**With SBS 2011**, establish a remote desktop connection as usual; ThinPrint Client starts automatically.

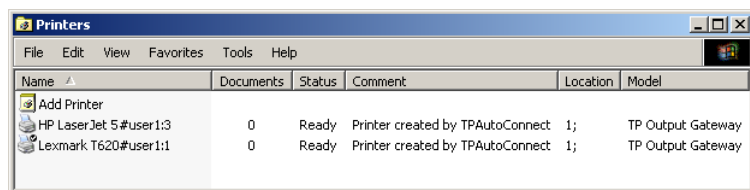
## Printing

- As a remote user, open the Web site of the SBS on your notebook or home PC and select CONNECT TO A COMPUTER.
- Select your terminal server or workplace computer (Illus. 4), and click CONNECT. The login screen of your terminal server or workplace computer will appear.



**Illus. 4** Small Business Server's web site (2003 and 2008 only): Select your machine

- After logging in, you will find all the notebook's or remote PC's printers in the remote desktop's PRINTERS AND FAXES folder (Illus. 5). The printer names are given your user name; e.g., "user1".



**Illus. 5** Printers from "user1" on the remote desktop (example)

- Open an application and print using these printers.  
In the printer properties you can also select a client-side preview.