

ThinPrint Server Engine

(version 8.6)

Quick installation

Cortado AG
Alt-Moabit 91 a/b
10559 Berlin
Germany/Alemania

Cortado Pty. Ltd.
L 10, 275 Alfred Street
North Sydney/NSW/2060
Australia

Cortado, Inc.
20006 Detroit Road, Suite 303
Cleveland, OH 44116
USA/EEUU

Cortado, Inc.
7600 Grandview Avenue, Suite 200
Denver, Colorado 80002
USA/EEUU



E-Mail: info@team.cortado.com
Web: www.thinprint.com
Issued: August 9, 2011 (v36)

© Copyright

This document is the intellectual property of Cortado AG. This document may be copied in whole or in part, provided this Copyright notice is included in every copy.

® Registered trade marks

All hardware and software names mentioned in this document are the registered trademarks of their respective companies or should be regarded as such.

Safety warning

All Cortado products are pure software solutions. Please note the safety warnings in the technical documentation from your hardware vendor and from the manufacturer of each device and component. Before beginning installation, we recommend closing all windows and applications and deactivating any virus scanner.

Technical requirements

Be sure that the **TCP port number/s** for printing via TCP/IP is/are not being blocked by another program or by a server-side or client-side firewall. **IPv4** has to be enabled for each involved machine.

ThinPrint Engine

ThinPrint requires the following:

Supported server operating systems

- Windows Server 2003 with Service Pack 2 or later
- Windows Server 2003 x64 with Service Pack 2 or later
- Windows Server 2003 R2 with Service Pack 2 or later
- Windows Server 2003 R2 x64 with Service Pack 2 or later
- Windows Server 2008
- Windows Server 2008 x64
- Windows Server 2008 R2
- Windows Server 2008 R2 Core

inclusive failover clusters (Microsoft Cluster Services)

Also required:

- **.net Framework** with Version 2.0 or later
- With Windows Server 2008 SP1: Microsoft Hotfixes KB958741 (Print Job Owner) and KB958656 (Client Side Rendering)
- For Citrix XenApp: XenApp Web Plugin 11.0.150 or later
- The Windows service *Print Spooler* should not be disabled.

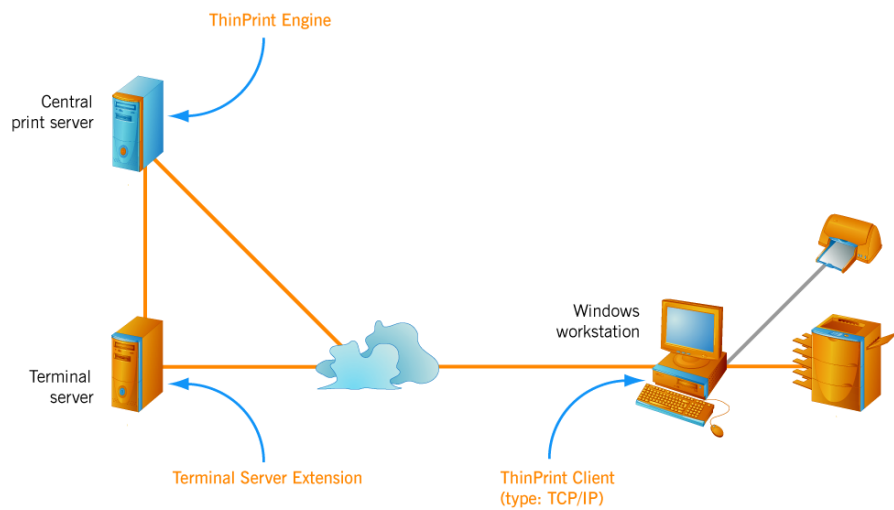
ThinPrint Client

- Workstations or local print servers: Windows 7, 7 x64, Vista, Vista x64, XP, XP x64, 2008, 2008 x64, 2008 R2, 2003, 2003 x64, 2003 R2, 2003 R2 x64
- supported, but with limited functionality, are:
Windows 2000, NT 4, ME, 98, 95 with Windows-Installer version 2.0 and later, Apple MacIntosh, Linux, Java
- Thin clients with embedded ThinPrint Client as well as ThinPrint gateway appliances

Administrator permissions Administrator permissions are required for all installation and configuration procedures. It is therefore best to log on to Windows as ADMINISTRATOR.

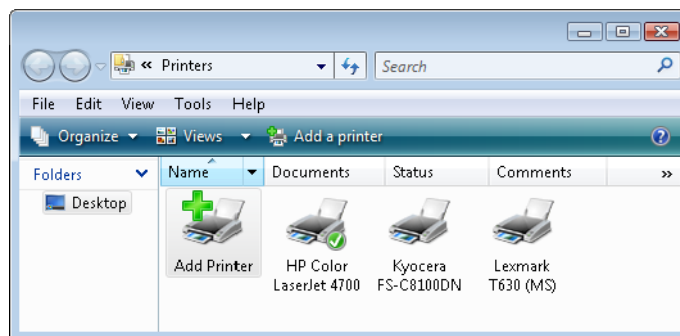
Sample scenario

Sample scenario with the ThinPrint components to be installed



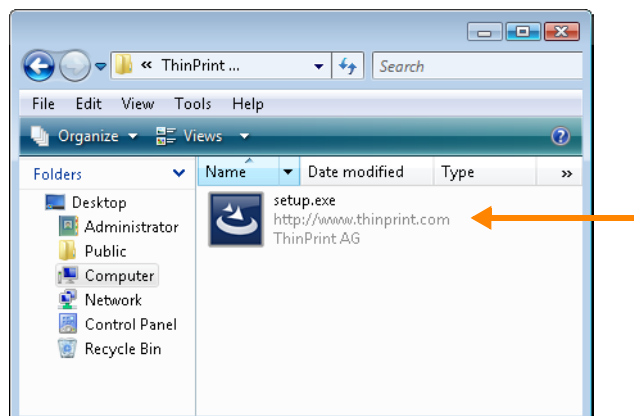
Installing ThinPrint Client on a Windows workstation

- Printer installed?
- Feel free to install several printers, as many as you like – including network printers, multi-functional devices, ink-jets

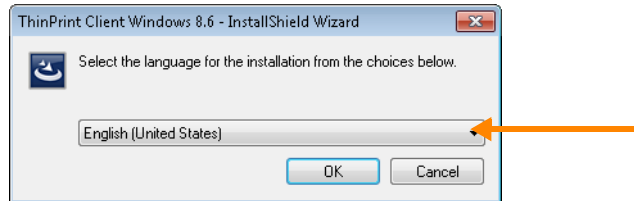


Note! Local Administrator permissions are necessary on the workstation to install the ThinPrint Client Windows.

- Start the ThinPrint Client installation program Setup.exe



- Select a language and click OK to confirm



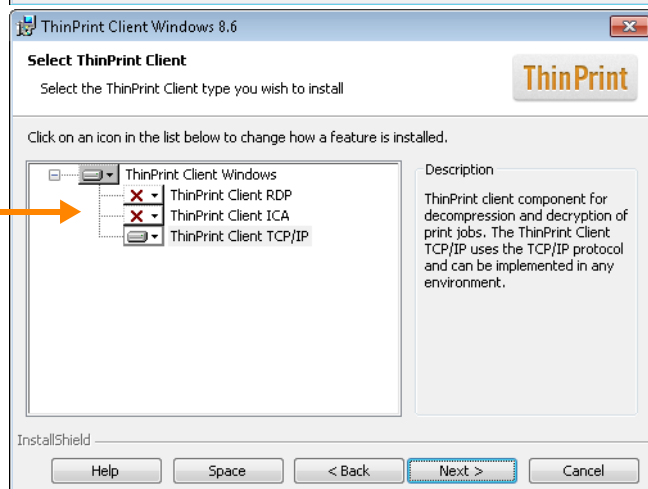
- In the Welcome window just click NEXT



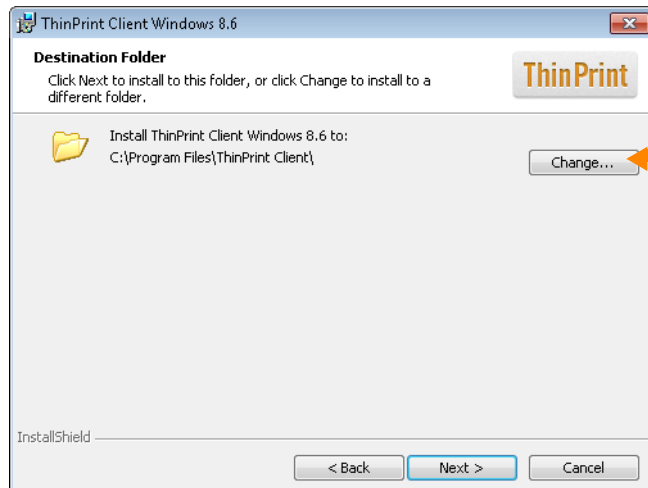
- Read the License Agreement carefully and accept its terms and click NEXT



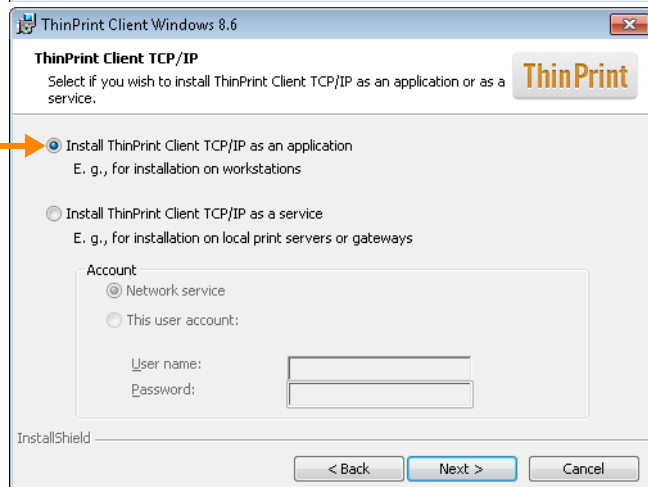
- Select TCP/IP as the ThinPrint Client type and click NEXT



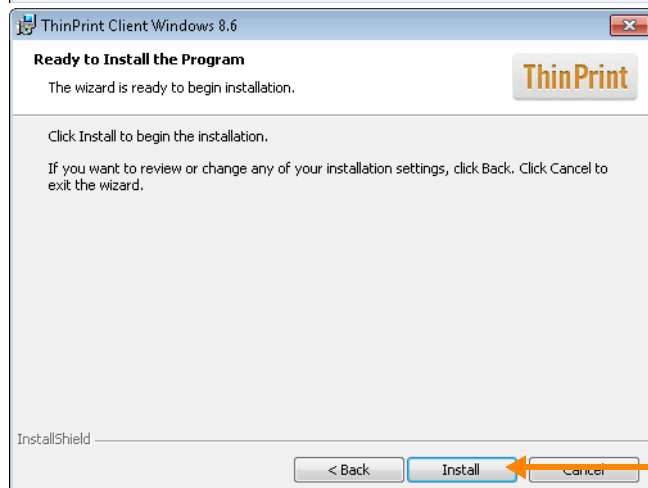
- Choose the installation path and click NEXT



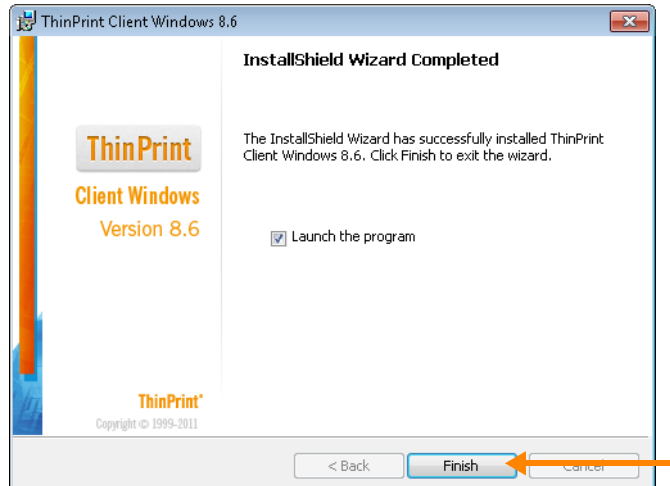
- Choose the installation method “as an application” and click NEXT



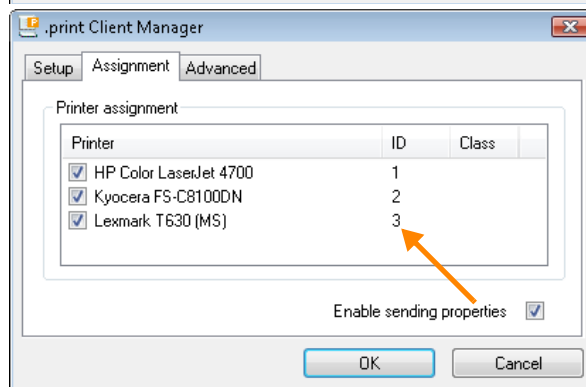
- Click INSTALL to start the installation process



- Just click FINISH.
The ThinPrint Client will be started



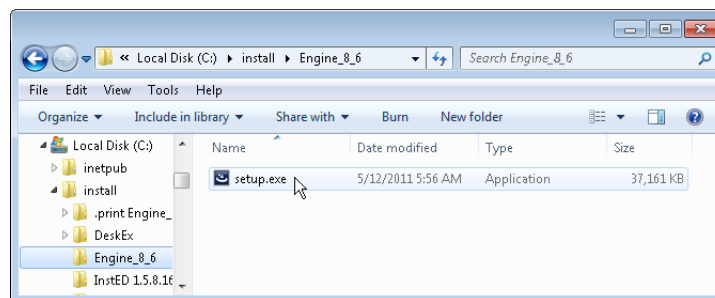
- Open the ThinPrint Client Manager, change to ASSIGNMENT tab and find out the printer IDs
- Click OK to confirm



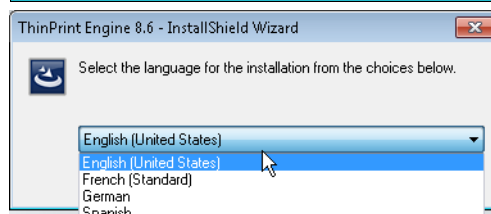
Installing Server Engine on a central print server

Note! Before beginning installation, we recommend closing all windows and applications and deactivating any virus scanner.

- Start ThinPrint Engine installation program SETUP.EXE

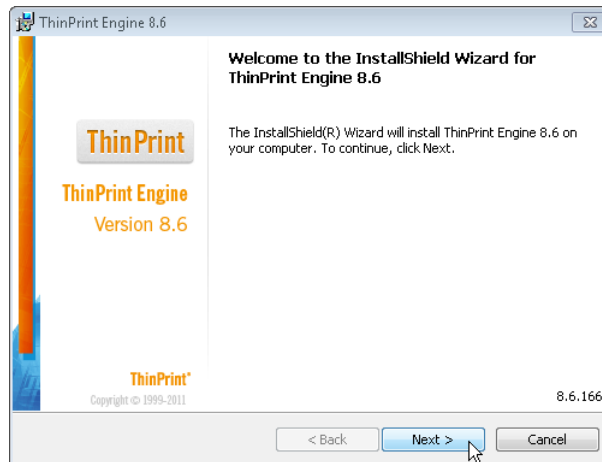


- Select a language
- Click OK

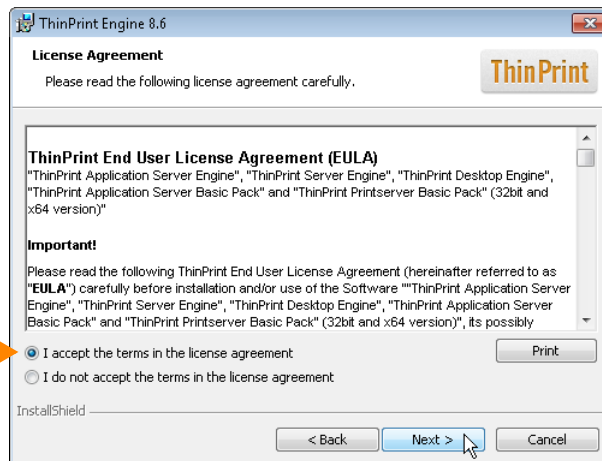


A reboot may be required if Windows Installer 4.5 was not installed before installation (in this case, Windows Installer 4.5 will be installed automatically).

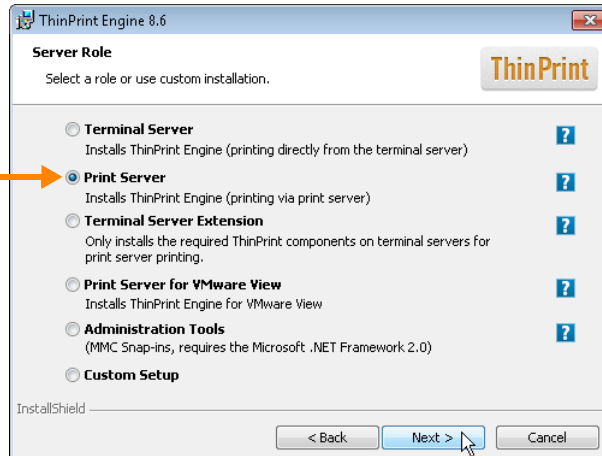
- InstallShield Wizard opens. Click NEXT



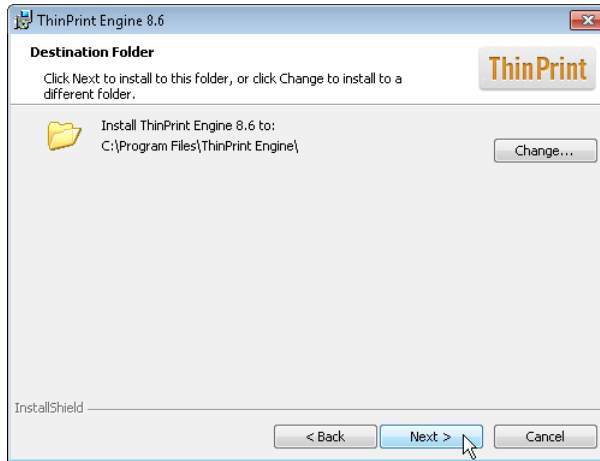
- Read the license agreement and accept it
- Click NEXT



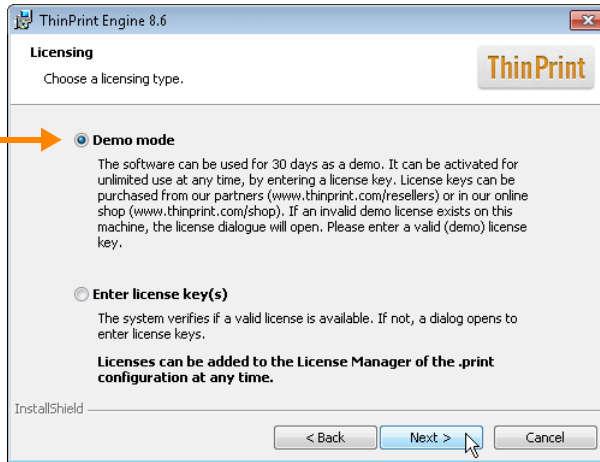
- Select PRINT SERVER
- Click NEXT



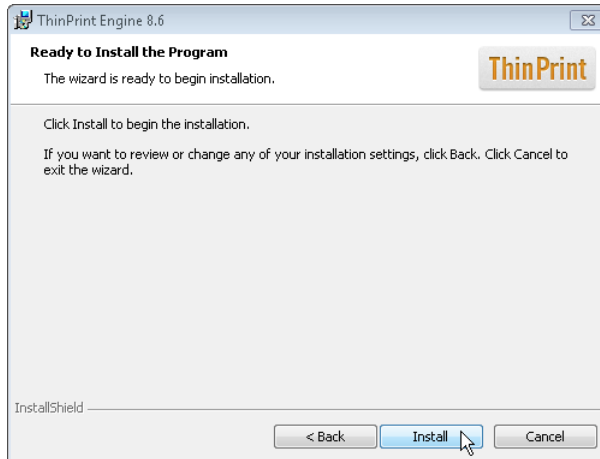
- Confirm installation folder with NEXT



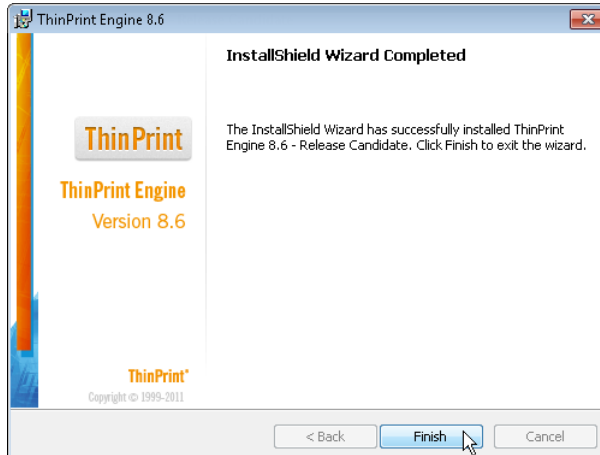
- Select DEMO MODE
- Click NEXT



- Click INSTALL



- Click FINISH

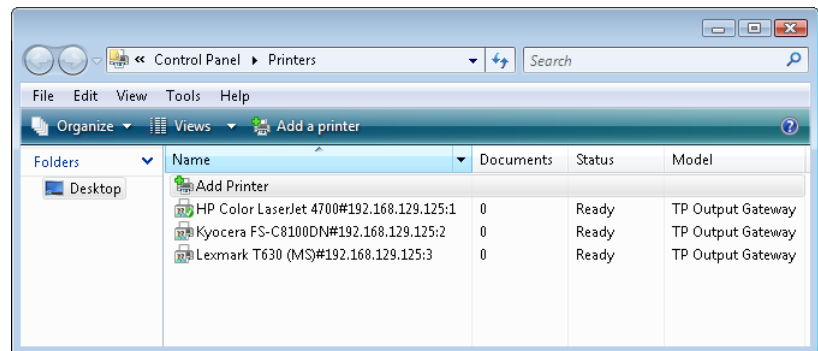


Here, a server reboot is required.

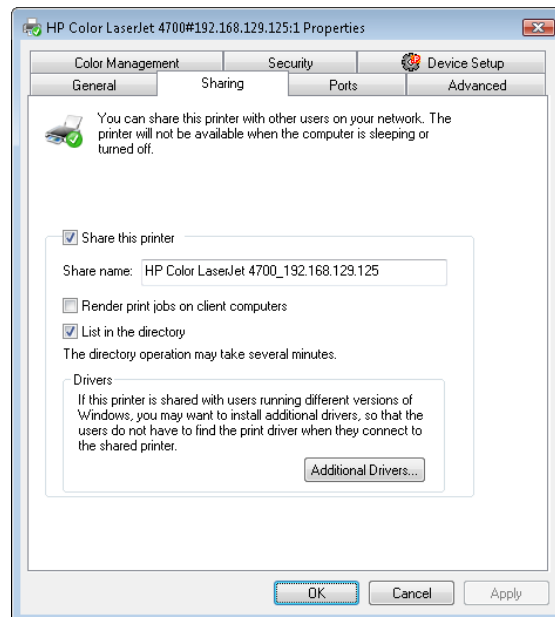
Creating printers on the central print server (Driver Free Printing)

After server restart:

- Open the PRINTERS folder
- Create a printer on the server for each Windows workstation printer, attach them to **ThinPort:** and **share** them; **share name = printer name on the workstation;** **driver: TP Output Gateway;** add client address and printer ID ([Page 7](#)) to the printer name, syntax: **anyname#address:ID**



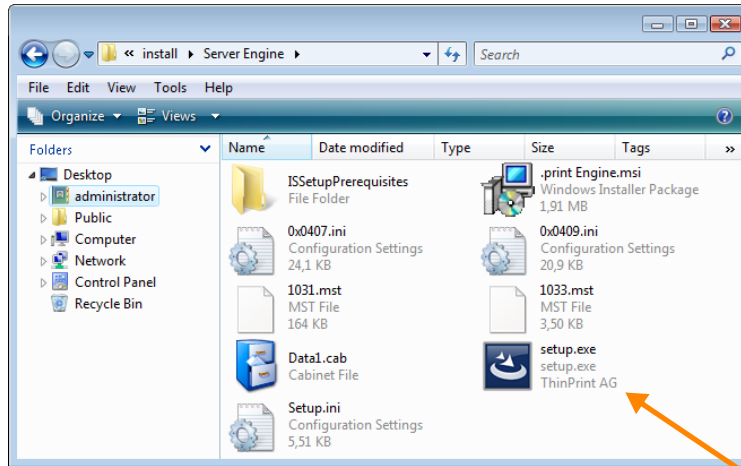
- Check in the printer properties:
 - Whether the share is the same as the respective printer name on the workstation
 - Whether the option **RENDER PRINT JOBS ON CLIENT COMPUTERS** is disabled



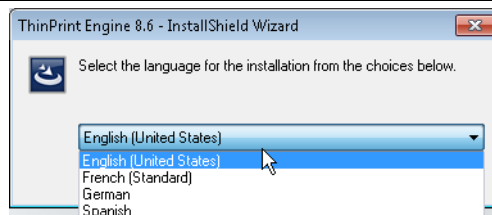
Installing Terminal Server Extension on a terminal server

Note! Before beginning installation, we recommend closing all windows and applications and deactivating any virus scanner. Also be aware that after installation Server Engine will only become functional after a Windows restart.

- Start ThinPrint Engine installation program Setup.exe

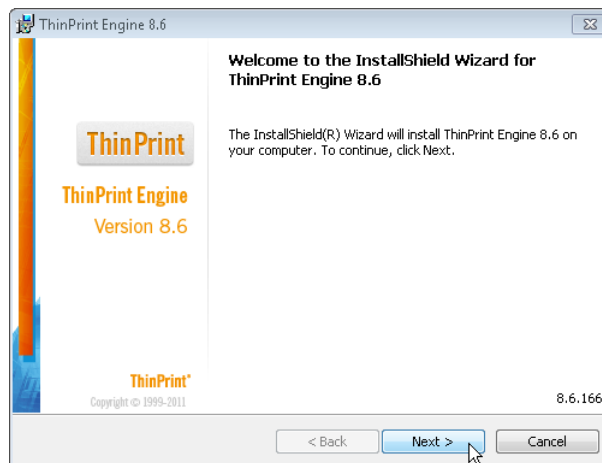


- Select a language
- Click OK

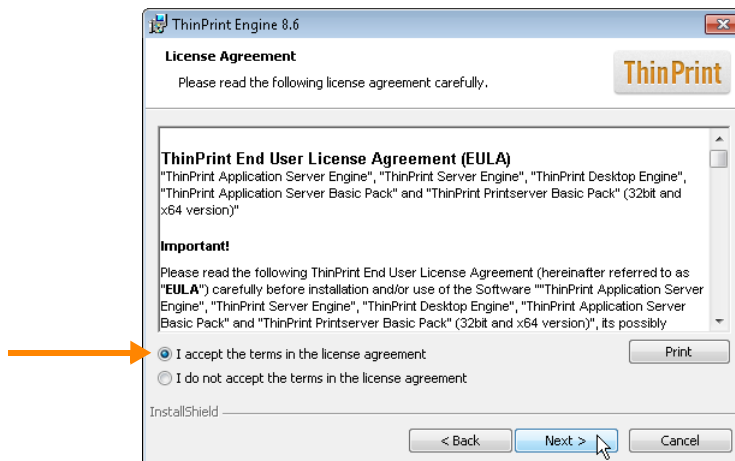


A reboot may be required if Windows Installer 4.5 was not installed before installation (in this case, Windows Installer 4.5 will be installed automatically).

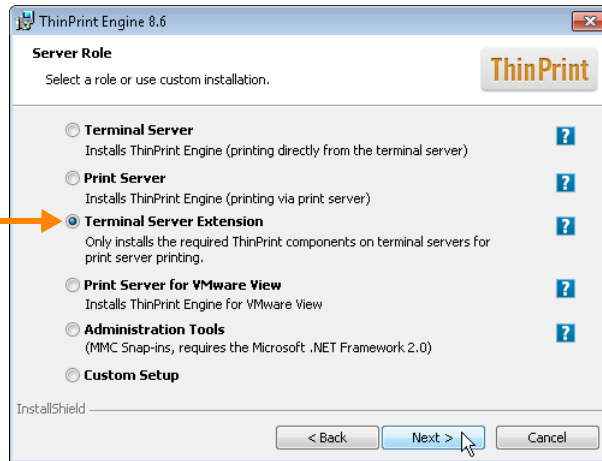
- InstallShield Wizard opens. Click NEXT



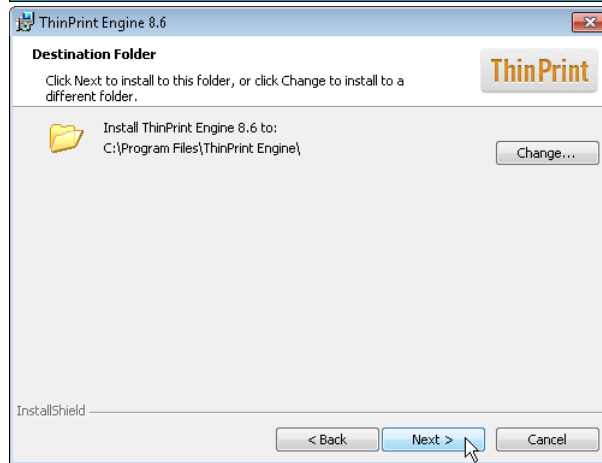
- Read the license agreement and accept it
- Click NEXT



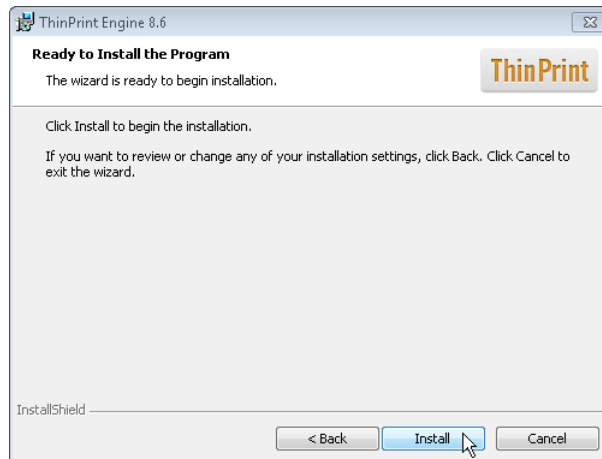
- Select
TERMINAL SERVER
EXTENSION
- Click NEXT



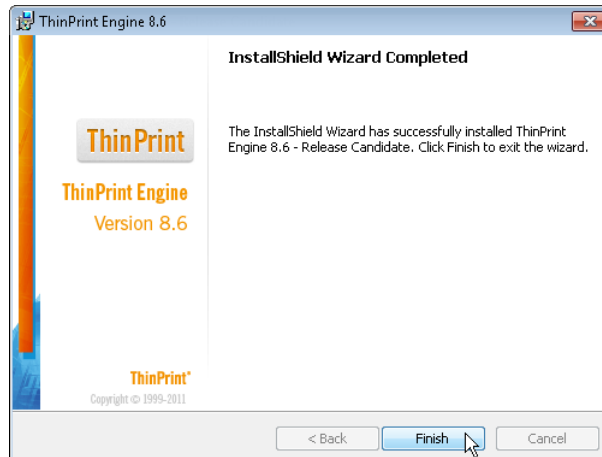
- Confirm installation
folder with NEXT



- Click INSTALL



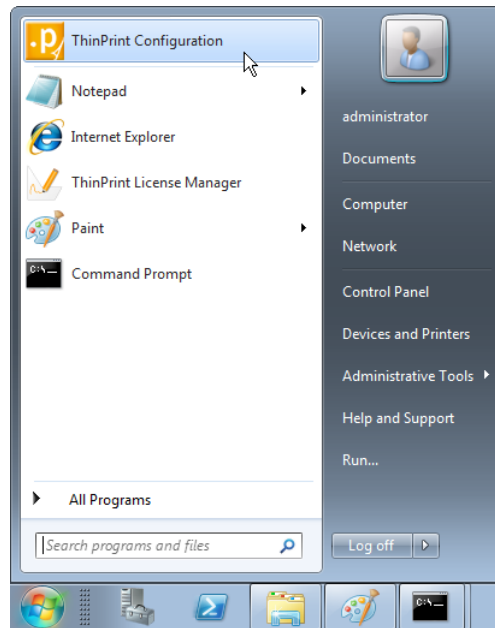
- Click FINISH



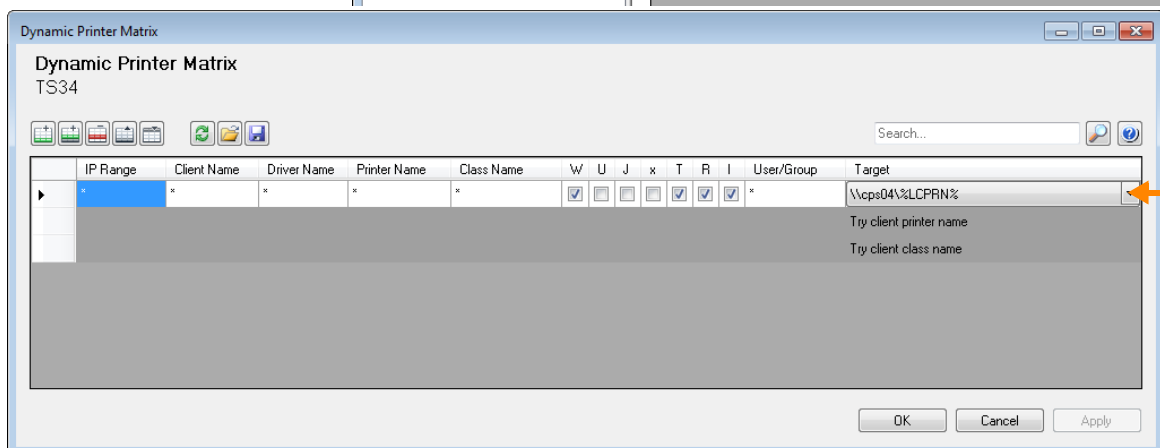
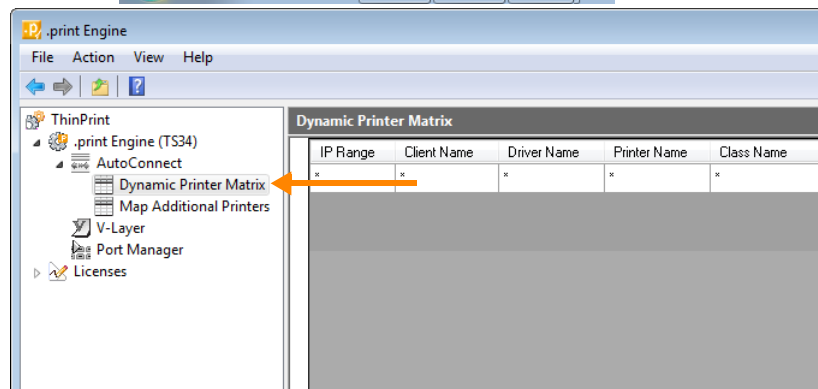
Here, a server reboot is required.

After server reboot:

- Open Thin-Print Engine Configuration



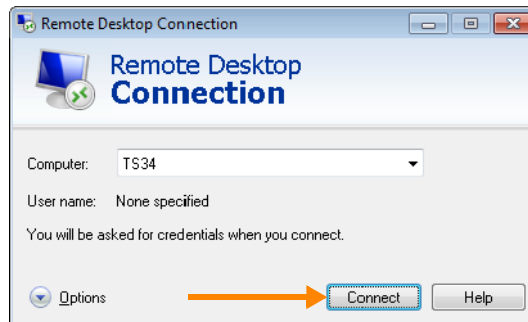
- Open Dynamic Printer Matrix



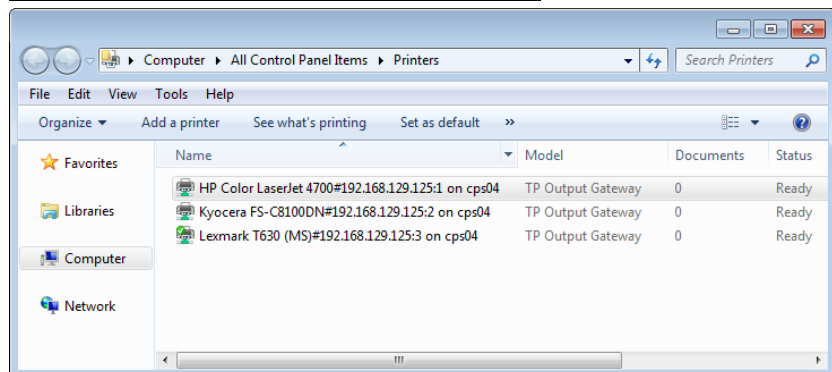
- Select AutoConnect's DYNAMIC PRINTER MATRIX (edit with double-click into the gray area)
- Enter a new line with the following entry in the target column:
 \\CPS04%\%LCPRN%
 (CPS04 = address of the central print server)
- Click OK to confirm

Printing from a session (Driver Free Printing)

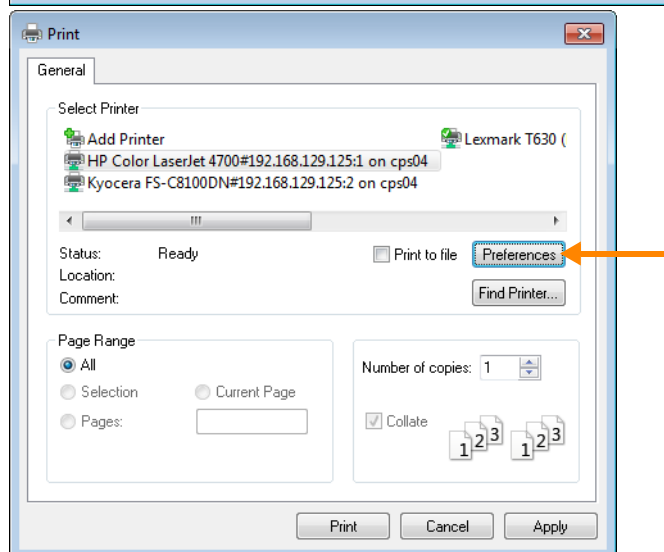
- Start a terminal session from the workstation



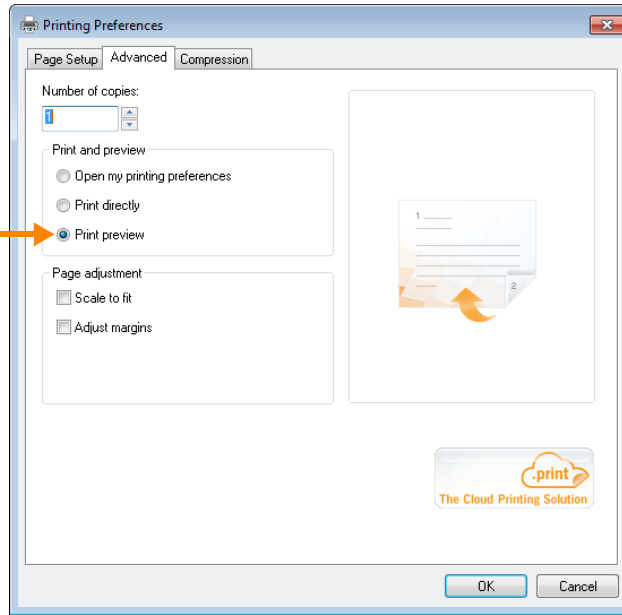
Printers are created automatically in the session



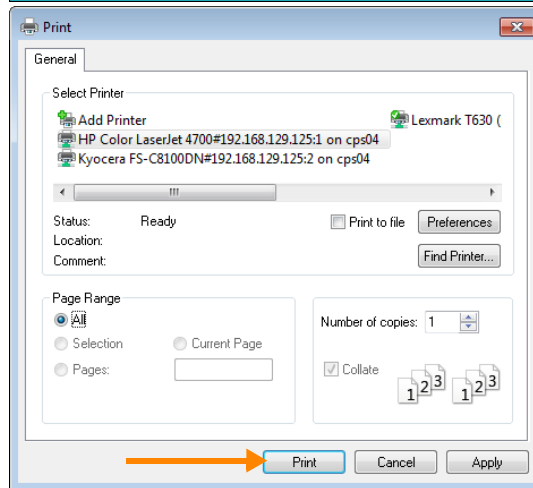
- Open an application and select PRINT
- Click PREFERENCES



-Select ADVANCED
→ PRINT PREVIEW
-Click OK



-Click PRINT



Print job will appear
as a preview on the
client machine

-Print locally

