

ThinPrint Management Center

Version 2.1

Quick Installation

Cortado AG
Alt-Moabit 91 a/b
10559 Berlin
Germany/Alemania

Cortado, Inc.
20006 Detroit Road, Suite 303
Cleveland, OH 44116
USA/EEUU

Cortado, Inc.
7600 Grandview Avenue, Suite 200
Denver, Colorado 80002
USA/EEUU

Cortado Pty. Ltd.
Level 20, The Zenith Centre, Tower A
821 Pacific Highway, Chatswood, NSW 2067
Australia



E-Mail: info@team.cortado.com

Web: www.thinprint.com

Issued: December 9, 2011 (v20)

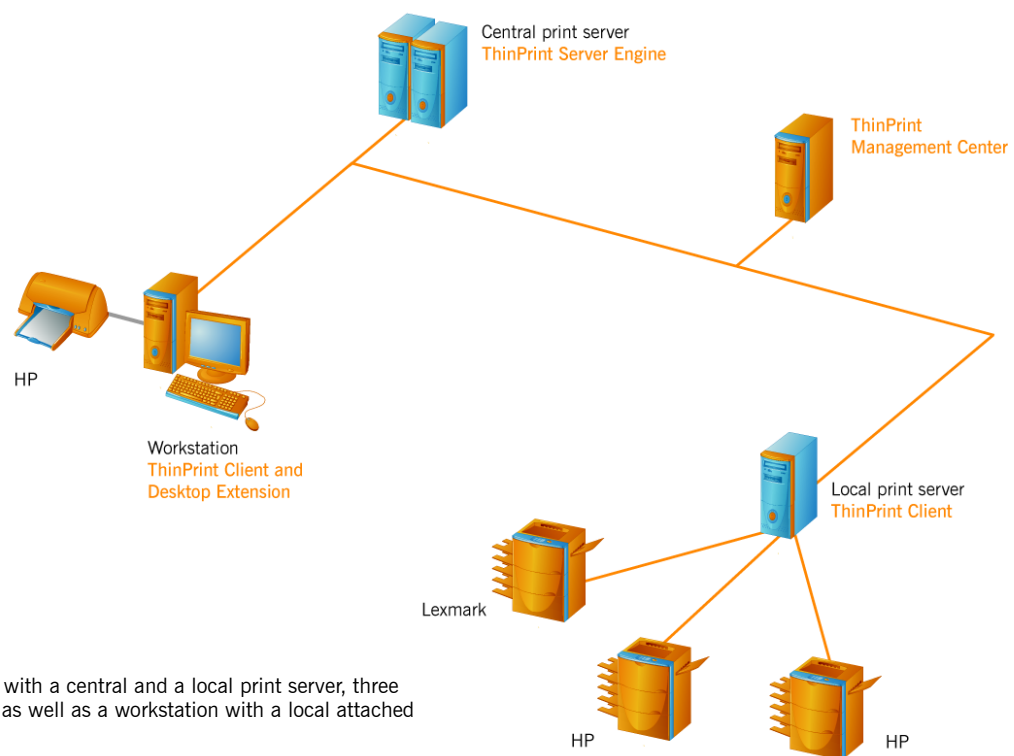
- Overview 3
 - Contents of this guide 3
 - System requirements for this sample scenario 4
- Installing Server Engine on the central print server 5
- Installing ThinPrint Client on the local print server 7
- Installation on the workstation 10
 - Installing ThinPrint Client Windows 10
 - Installing ThinPrint Desktop Extension 10
- Installing AutoConnect's Group Policy Object 12
- Installing Management Center 14
- Basic configuration of Management Center 17
 - Creating printers on the central print server 22
 - Configuring AutoConnect 23
- Printing from the workstation 24

Overview

Contents of this guide

Here, all installation and configuration steps are described which are necessary for the effective use of Management Center. This is illustrated by a sample scenario. This contains the following ThinPrint components (see the orange labels):

- Server Engine (alternative: Engine for VMware View)
- ThinPrint Client and Desktop Extension
- Management Center



Sample scenario with a central and a local print server, three network printers as well as a workstation with a local attached printer

To simplify the configuration this guide is limited to the following functions or printing options:

- Creating printer objects on a central print server
- Direct printing via TCP/IP; target printer:
 - three network printers – installed on a local print server
 - a printer locally attached to a workstation
- Driver Free Printing (using *TP Output Gateway*)
- Printer mapping on a workstation using AutoConnect's *Dynamic Printer Matrix* as a Group Policy Object (GPO)

For all other printing options and functions see the manuals "ThinPrint Management Center" and "ThinPrint Server Engine" – e.g. for:

- V-Layer or Native Printing
- Printer driver management (using Driver Pool and Template Server)

- Printing via ICA or RDP (using Virtual Channel Gateway)
- Printing into masked networks (using Connection Service)
- Terminal servers or Virtual Desktop Infrastructures (VDI)
- Printer mapping using AutoConnect's *Map Additional Printers* table

System requirements for this sample scenario

- Central print server:
 - Windows Server 2003 SP2 or later, 2008¹ (x86 or x64) or 2008 R2
 - .NET Framework with Version 2.0 or later
 - Print Server role enabled
- Management Center computer:
 - Windows 7 SP1, x86 or x64
 - Windows Server 2008 SP2, x86
 - Windows Server 2008 R2
 - installed Microsoft-Hotfix [KB2493115](http://kb2493115)
 - .NET Framework 3.5
- SQL server: Microsoft SQL Server 2005 (Express) or higher
- Workstation: Windows 7
- Local print server:
 - Windows Server 2003 SP2, 2008 or 2008 R2
 - Print Server role enabled
- Active Directory:
 - All servers have to be members of the same domain (Active Directory).
 - A Reverse Lookup Zone has to be set up in the Domain Name System (DNS) in which all involved computers, devices and appliances are entered.
- Template server and Driver Pool: see *Management Center computer* or *Central print server* (except failover clusters)
- Firewall settings:
 - TCP ports for remote configuration of central print servers and template servers via WMI and RPC:
msdn.microsoft.com/en-us/library/aa389286.aspx
support.microsoft.com/kb/178517
 - TCP port for sending print jobs from a Server Engine to a ThinPrint Client: 4000 (default)

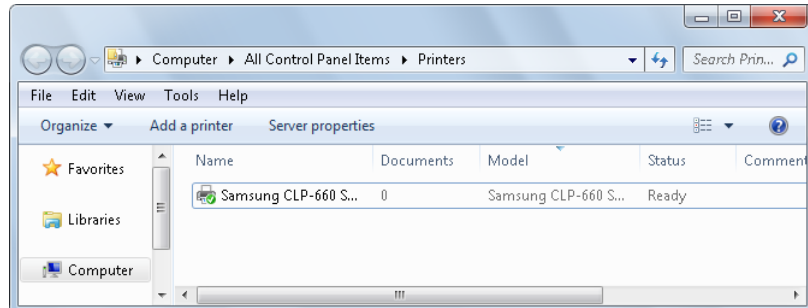
¹ with SP2 or Microsoft hotfixes KB958741 (Print Job Owner) and KB958656 (Client Side Rendering)

Installing Server Engine on the central print server

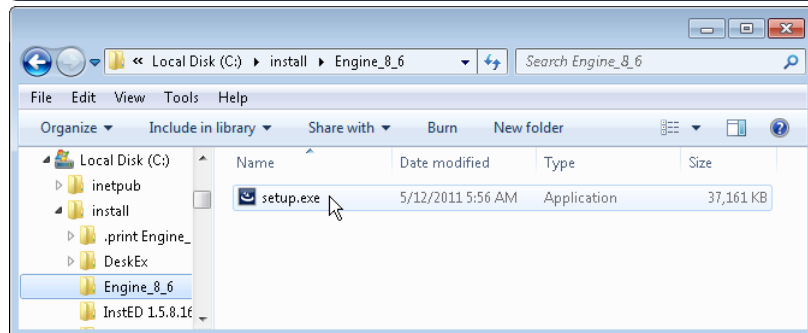
Note! Before beginning installation, we recommend closing all windows and applications and deactivating any virus scanner.

On the central print server:

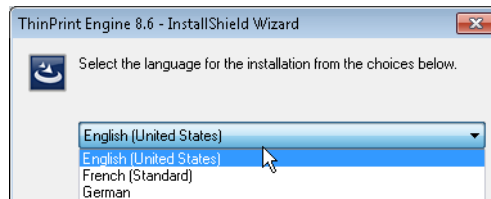
- Add and share a minimum of one printer object



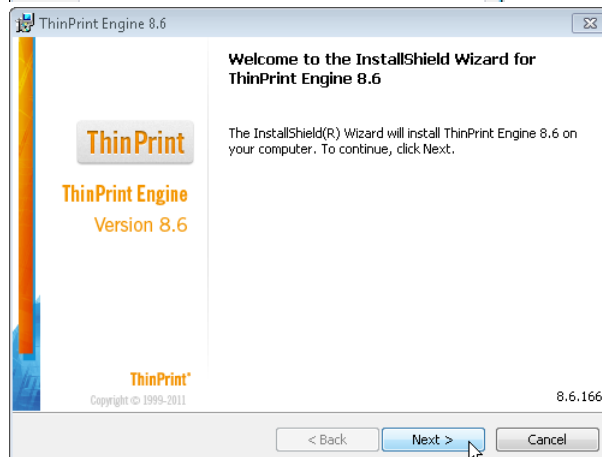
- Run the Server Engine installer *Setup.exe*



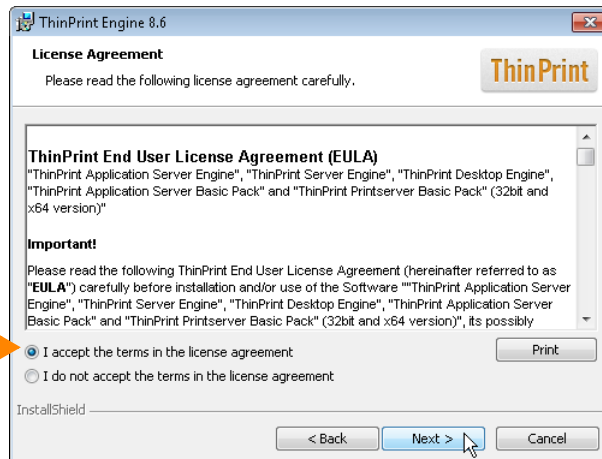
- Select a language
- Click OK to confirm



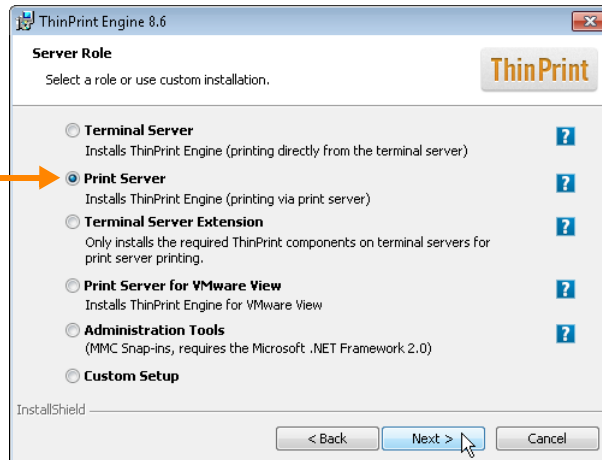
- Click NEXT to confirm the Welcome window



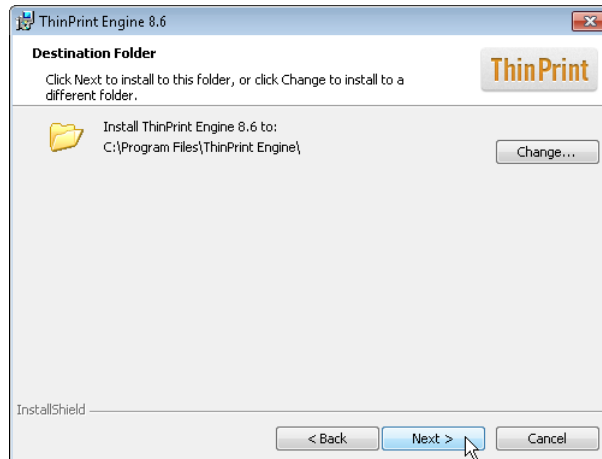
- Read the license agreement, accept it, and click NEXT to confirm



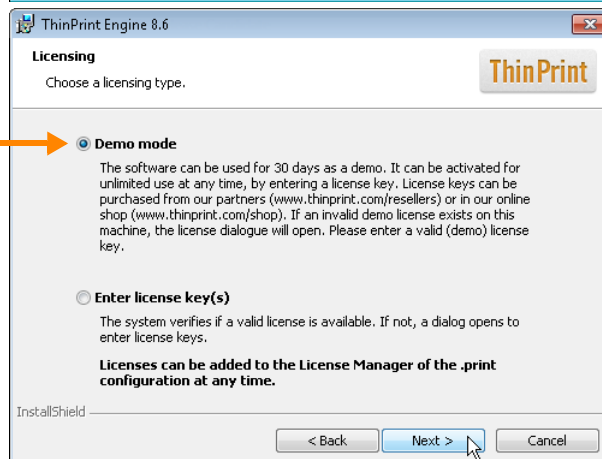
- Select PRINT SERVER
- Click NEXT to confirm



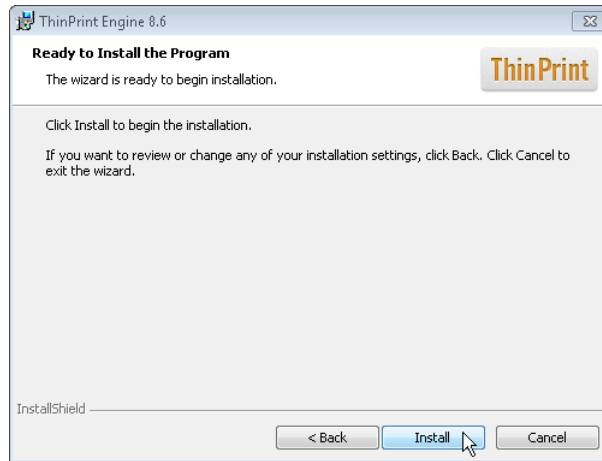
- Choose an installation directory and click NEXT to confirm



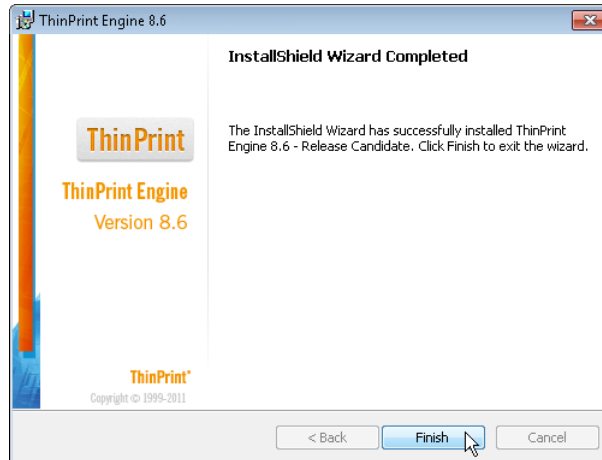
- Select DEMO MODE
- Click NEXT to confirm



- Click **INSTALL** to start the installation



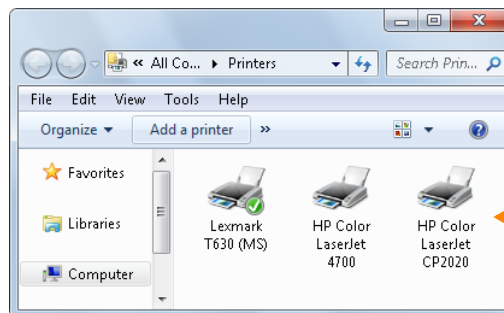
- Click **FINISH** to confirm



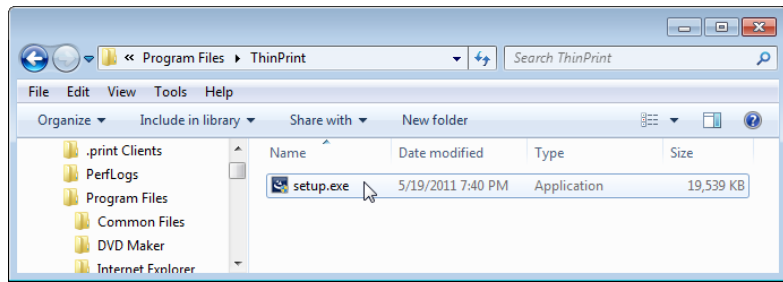
- Here, a server reboot is required.
- On print spooler instances of failover clusters additionally perform the following tasks:
 - Install the TP Output Gateway driver
 - Add a minimum of one ThinPrint Port
 - Add and share a minimum of one printer objectSee the white paper “Microsoft failover clusters and ThinPrint”.

Installing ThinPrint Client on the local print server

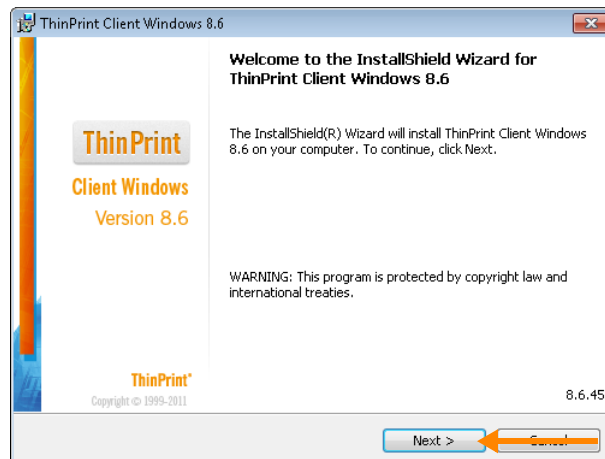
- Add the printers according to the sample scenario (here: 2 HP and Lexmark, see [Page 3](#))



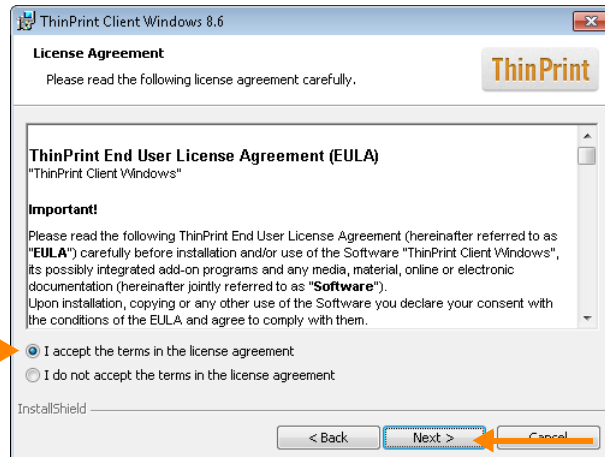
- Start the ThinPrint Client installation program Setup.exe



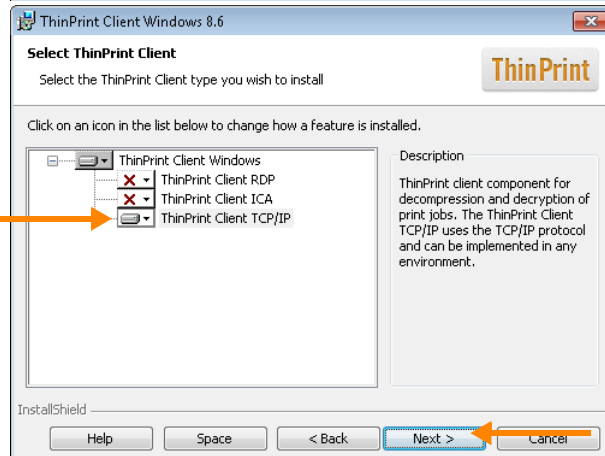
- Click NEXT to confirm the Welcome window



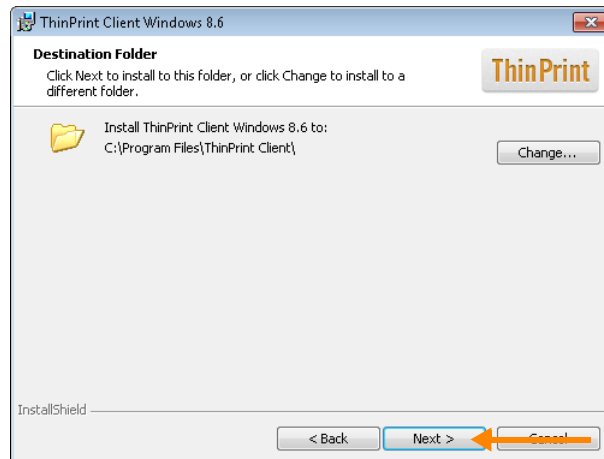
- Read the license agreement, accept it, and click NEXT to confirm



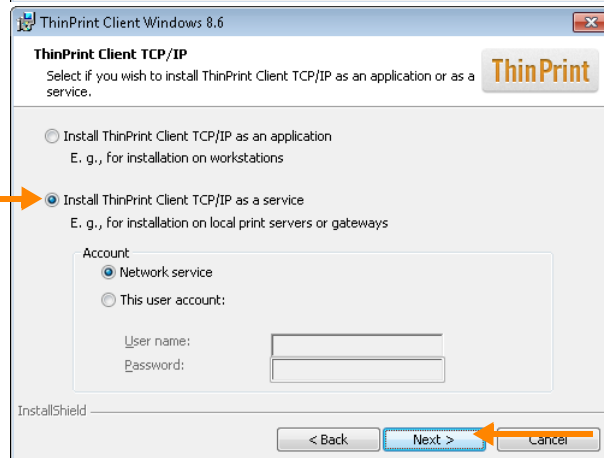
- Select TCP/IP as the ThinPrint Client type and click NEXT



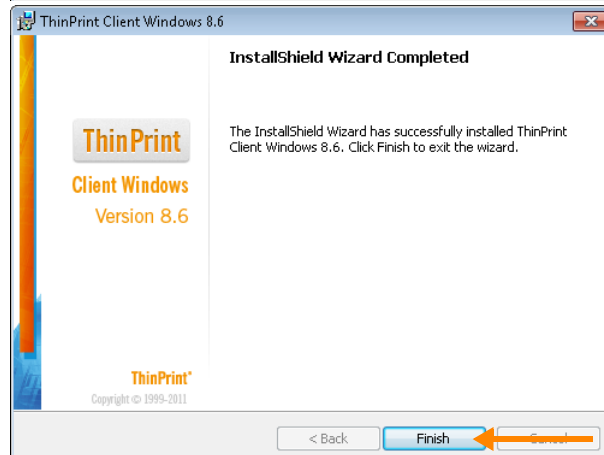
- Choose an installation directory and click NEXT to confirm



- Choose the installation method “as a service” and click NEXT



- Click FINISH to close the window

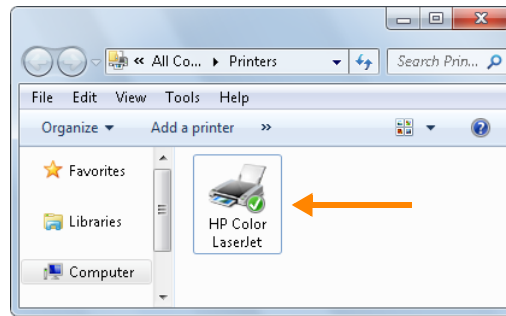


Installation on the workstation

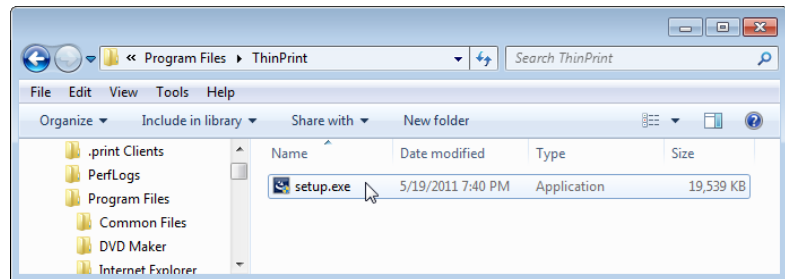
- Note!** Please keep the following installation order:
1. ThinPrint Client Windows
 2. Desktop Extension

Installing ThinPrint Client Windows

- Add the printer according to the sample scenario (here: HP, see [Page 3](#))



- Start the ThinPrint Client installation program Setup.exe

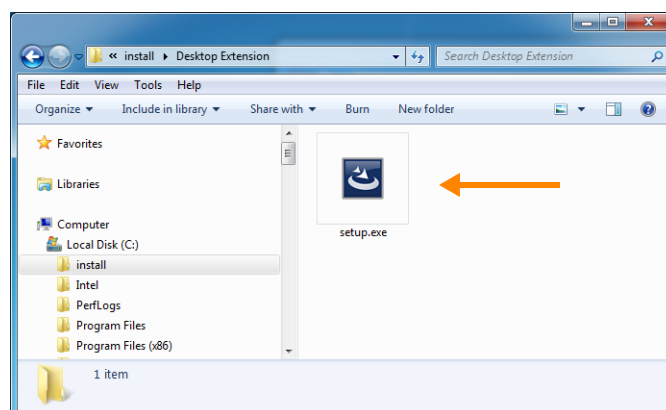


- Continue according to the description on [Page 8](#).

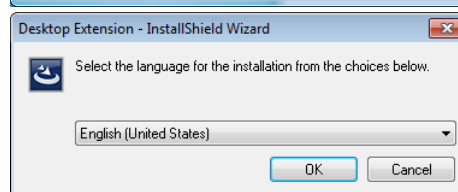
Installing ThinPrint Desktop Extension

The Desktop Extension is used to install AutoConnect and TP Output Gateway on the workstation.

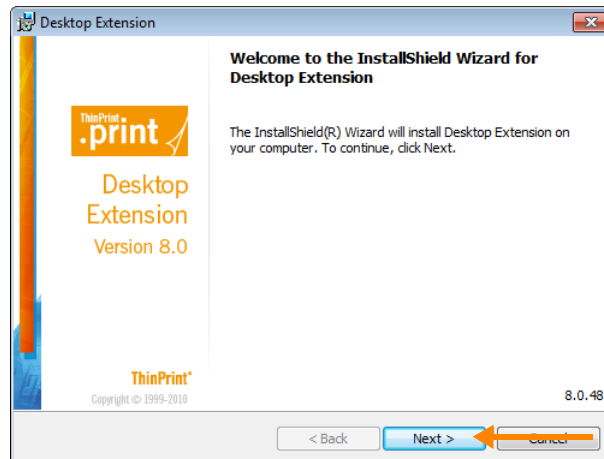
- Run the installer file Setup.exe



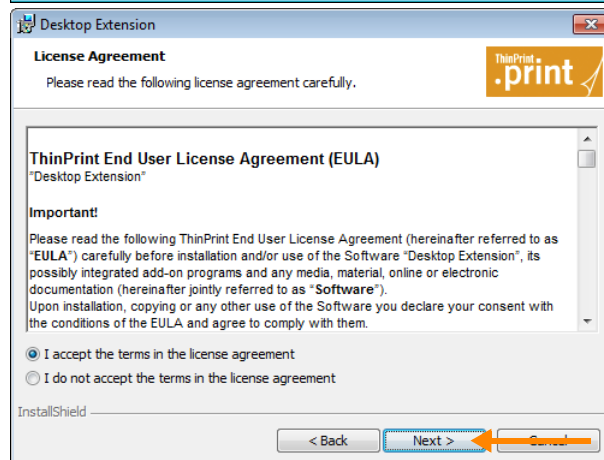
- Select a language
- Click OK to confirm



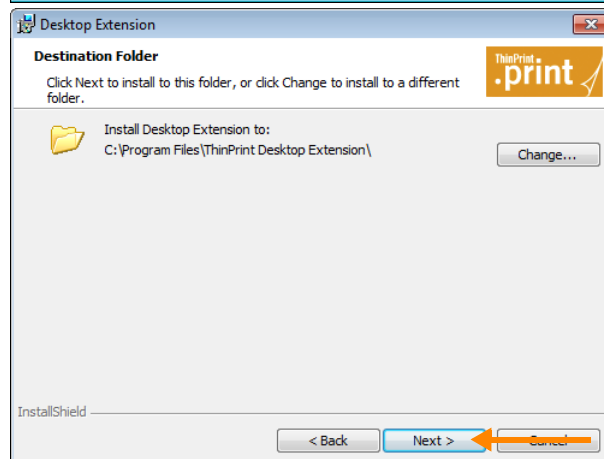
- Click NEXT to confirm the Welcome window



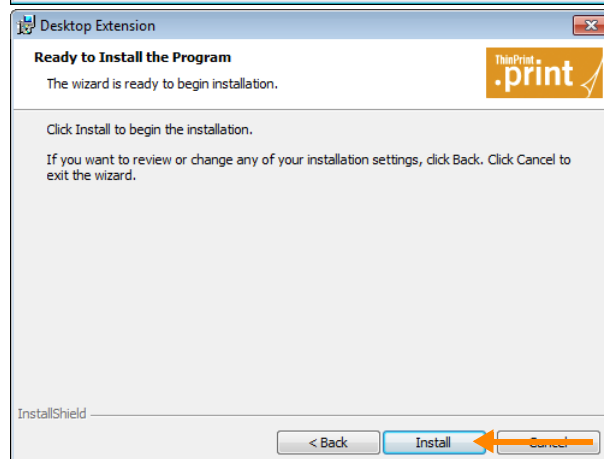
- Read the license agreement, accept it, and click NEXT to confirm



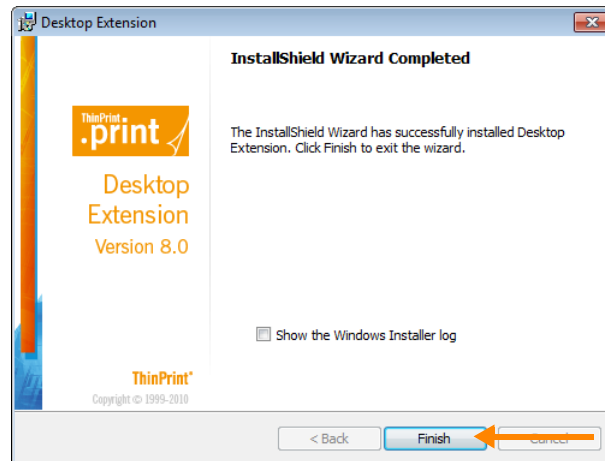
- Choose an installation directory and click NEXT to confirm



- Click INSTALL to start the installation procedure

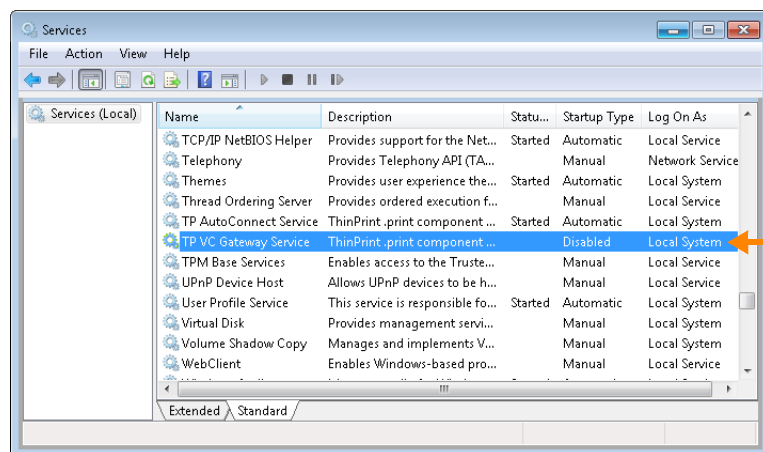


- Click FINISH to close the window



A system reboot may be necessary.

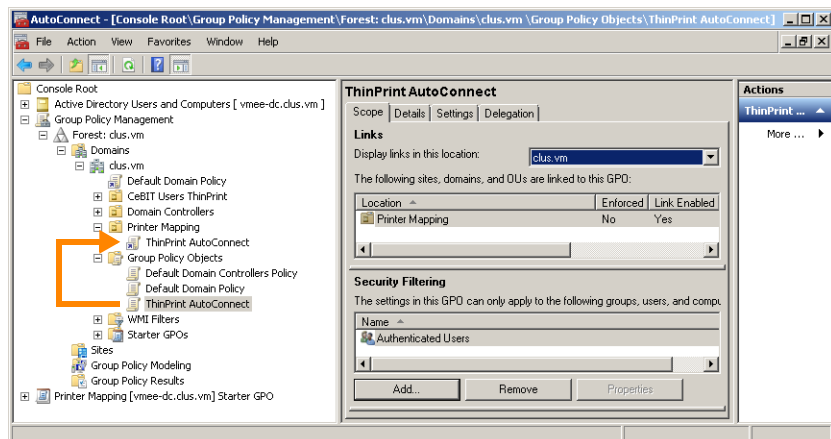
- Disable Windows service *TP VC Gateway Service* (because it interferes with the ThinPrint Client)



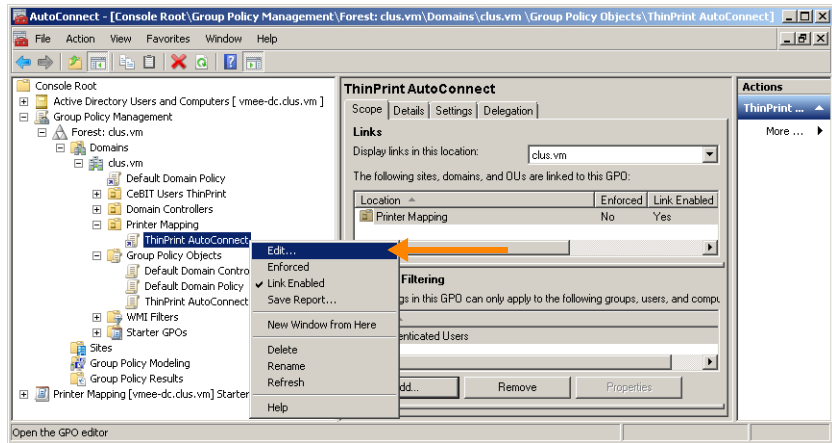
Installing AutoConnect's Group Policy Object

- Copy GPO AutoConnect installer Setup.exe (provided with Engine for VMware View and Server Engine) onto the machine on which you wish to edit your group policies. The machine must be a domain member. Run the installer.

- Open the *Group Policy Management*
- Connect an Organizational Unit (OU) to the AutoConnect GPO

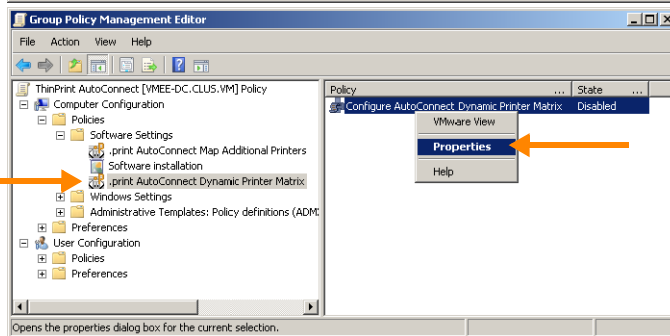


- Select EDIT to configure the AutoConnect GPO



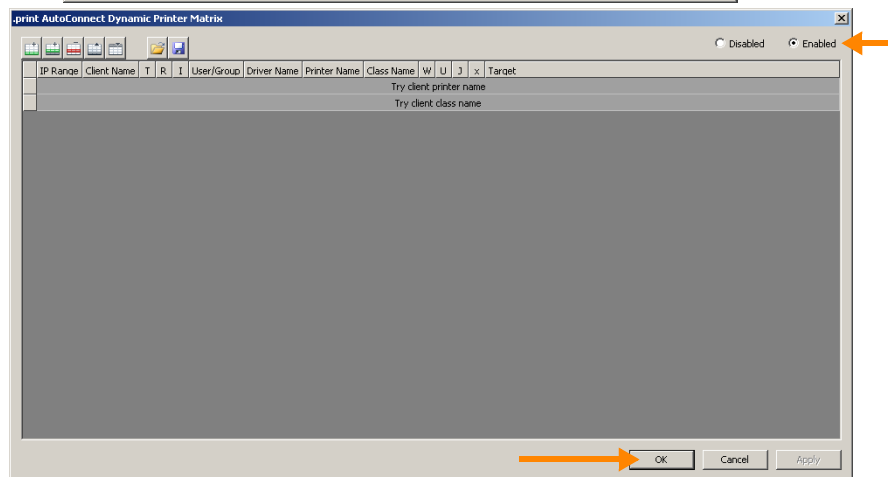
The *Group Policy Management Editor* will open.

- Select PROPERTIES to edit the *Dynamic Printer Matrix*

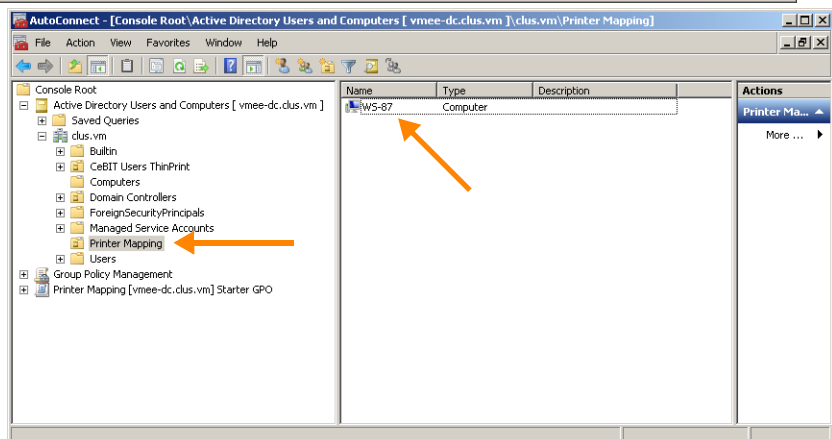


The *Dynamic Printer Matrix* will open.

- Select ENABLE
- Click OK to confirm

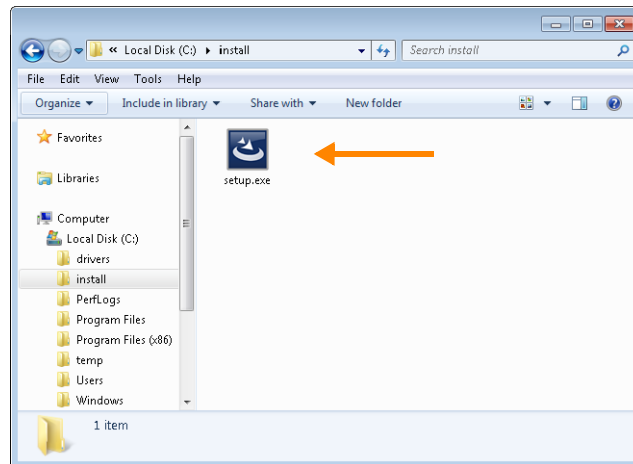


- Open *Active Directory Users and Computers*
- Add the computers (to this OU) to which the AutoConnect GPO shall be applied

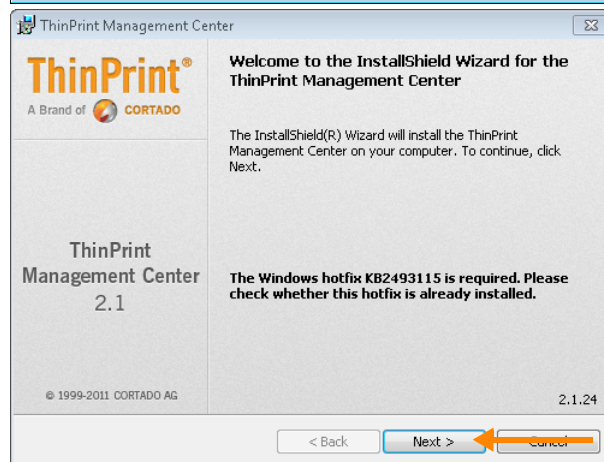


Installing Management Center

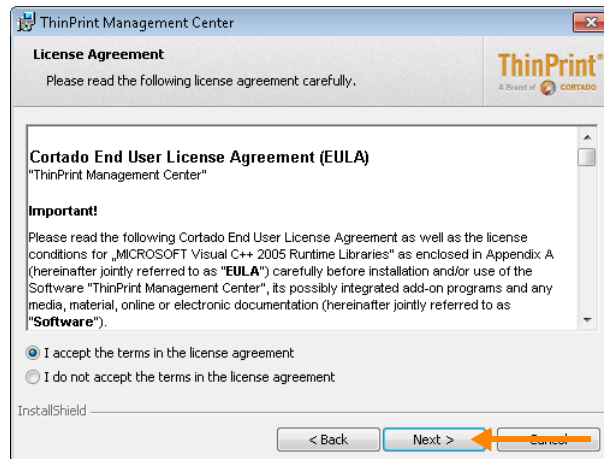
- On a separate Windows 7 machine (see the sample scenario):
Run the Management Centers installer file *Setup.exe*



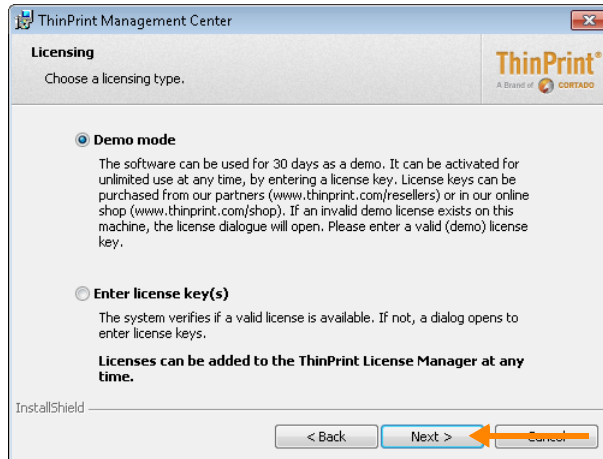
- Click NEXT to confirm the Welcome window



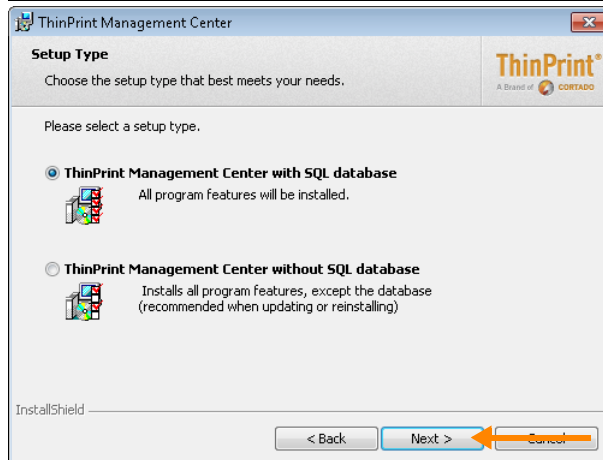
- Read the license agreement, accept it, and click NEXT to confirm



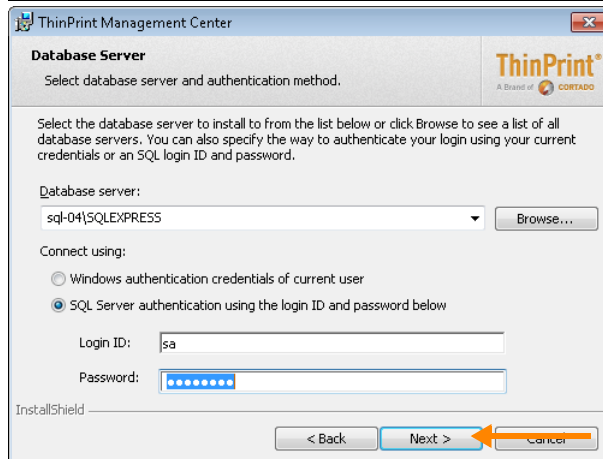
- Select DEMO MODE
- Click NEXT to confirm



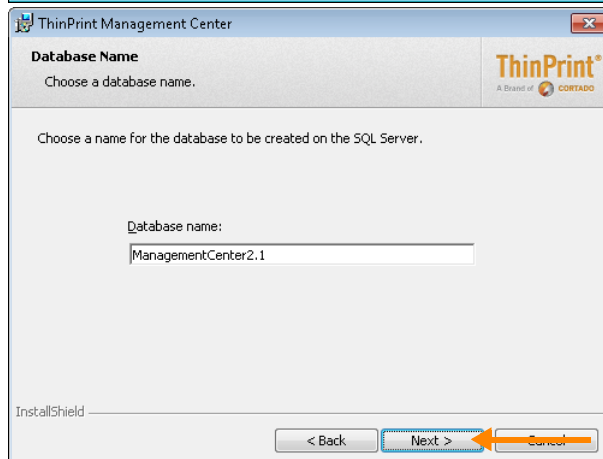
- Select THINPRINT MANAGEMENT CENTER WITH SQL DATABASE
- Click NEXT to confirm



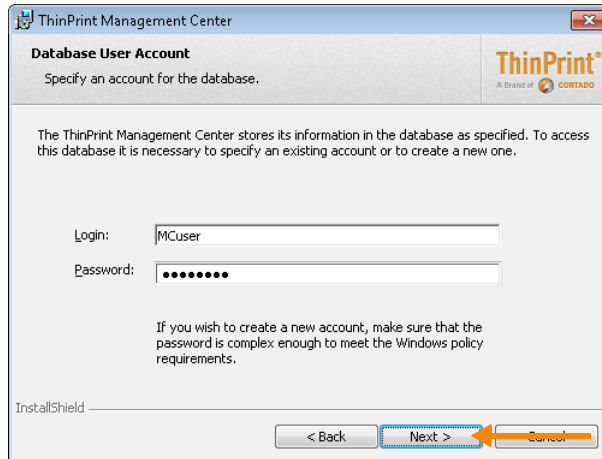
- Specify an SQL server's Admin account to set up a new database
- Click NEXT to confirm



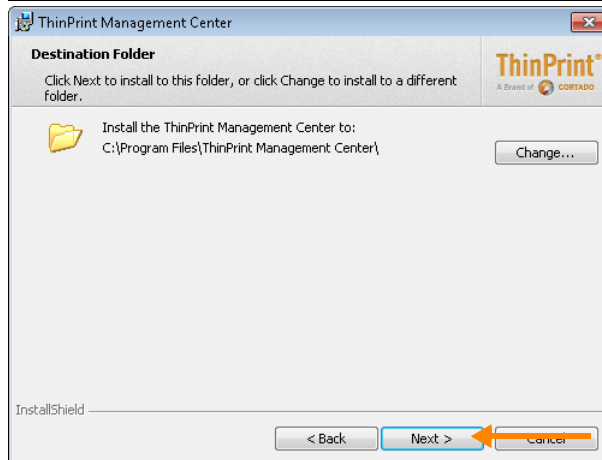
- Enter any name for the new database (will be created by the installer)
- Note this name!
- Click NEXT to confirm



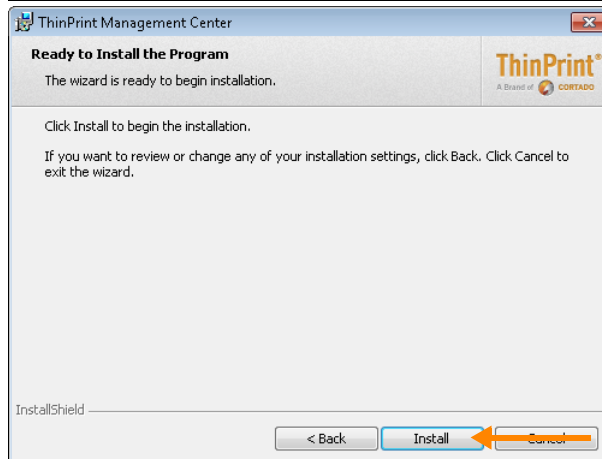
- Enter any user account for the Management Center's database (will be created by the installer)
- Note *Login* name and *Password!*
- Click NEXT to confirm



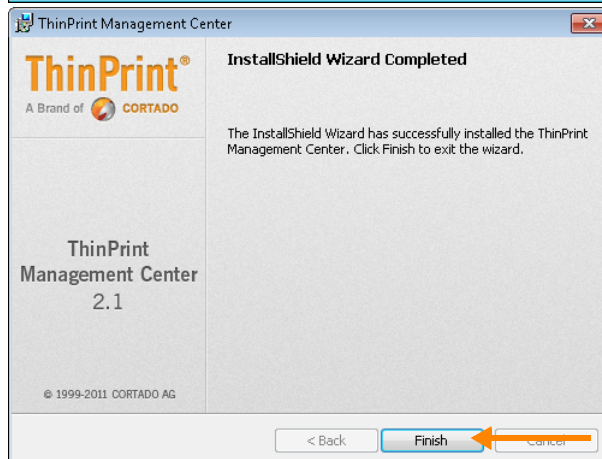
- Choose an installation directory and click NEXT to confirm



- Click INSTALL to start the installation procedure



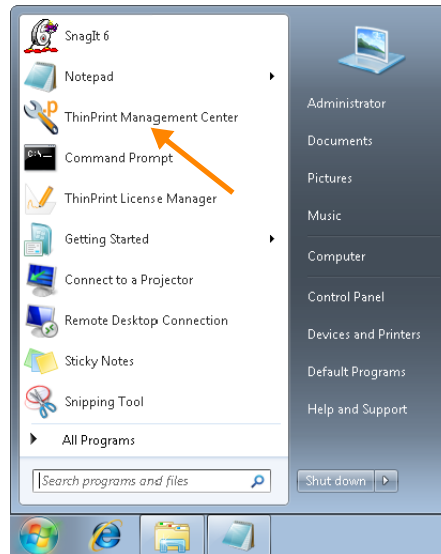
- Click FINISH to close the window



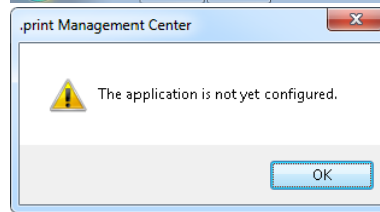
Basic configuration of Management Center

See also the sample scenario on [Page 3](#).

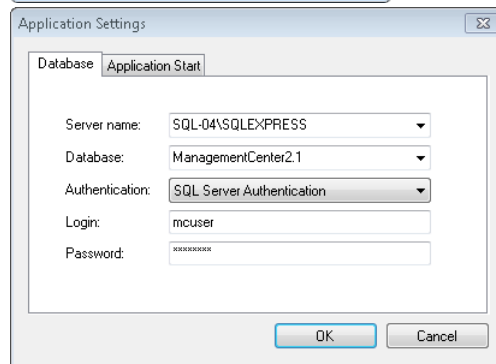
- Open the Management Center configuration console



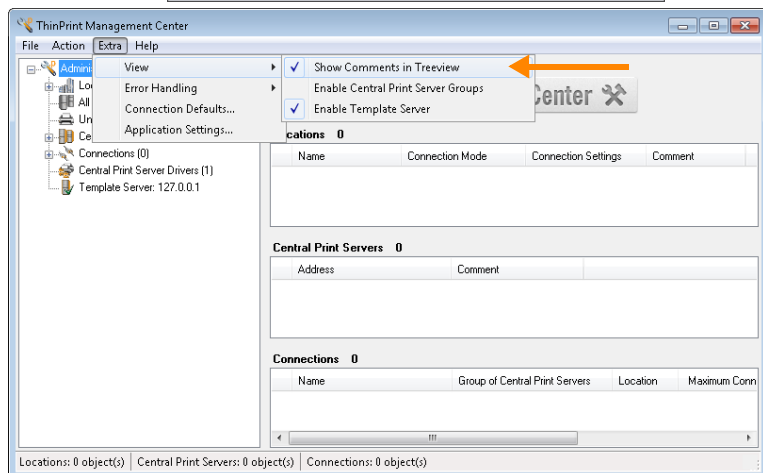
- Click OK to confirm



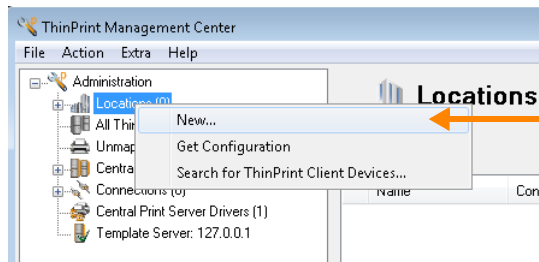
- Enter the SQL server
- Enter the (noted) Name and user account for the Management Center's database (see [Page 15](#))
- Click OK to confirm



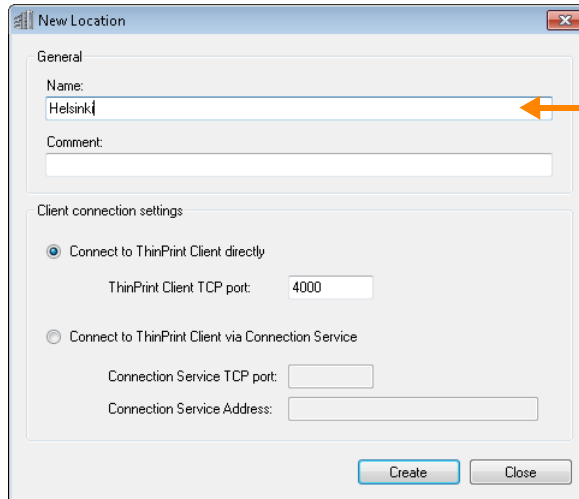
- Enable EXTRA → VIEW → SHOW COMMENTS IN TREEVIEW



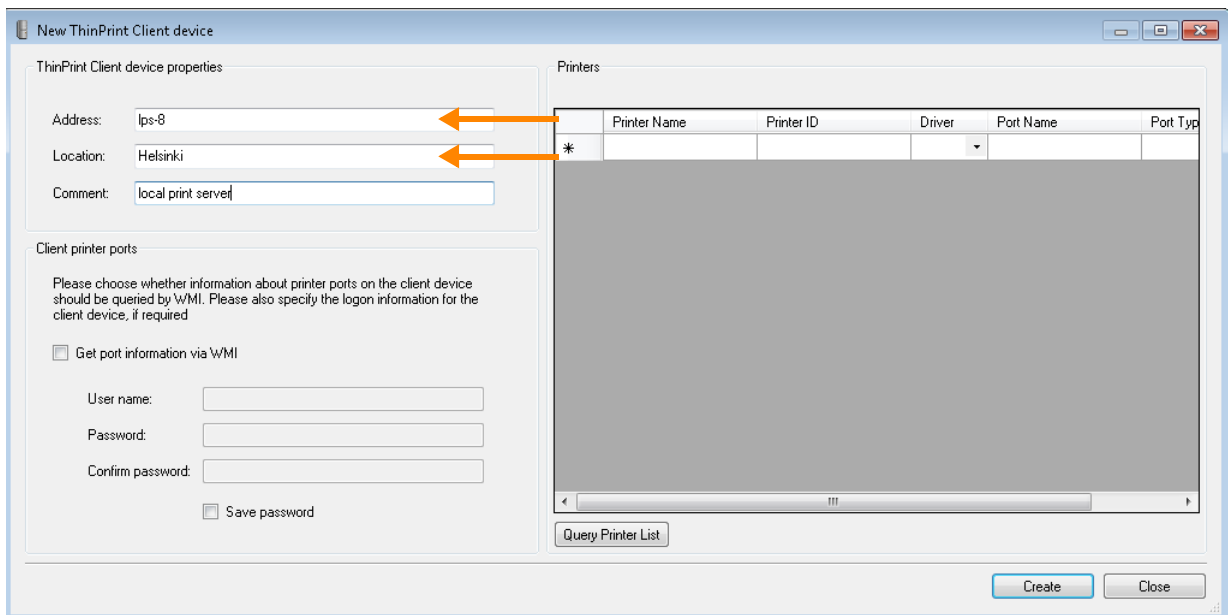
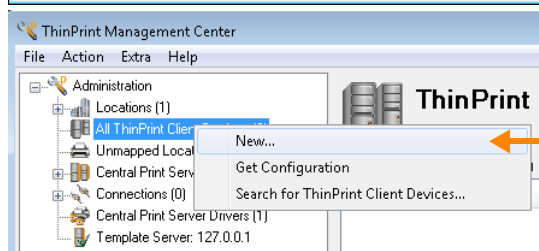
- Select LOCATIONS → NEW



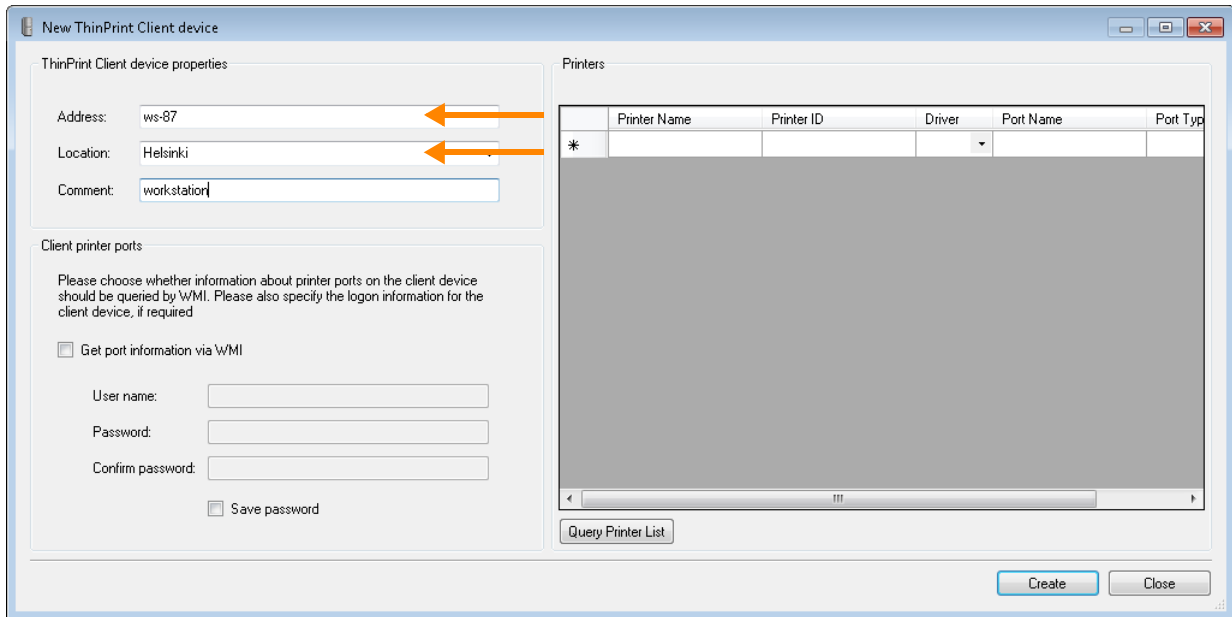
- Enter a name of a branch office (here: Helsinki)
- Click CREATE to confirm
- Click CLOSE



- Select ALL THINPRINT CLIENT DEVICES → NEW

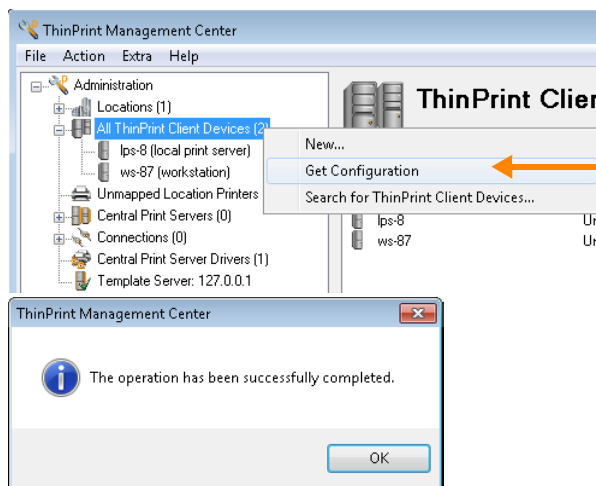


- Enter the local print server's hostname (here: lps-8)
- Select the LOCATION
- Click CREATE to confirm



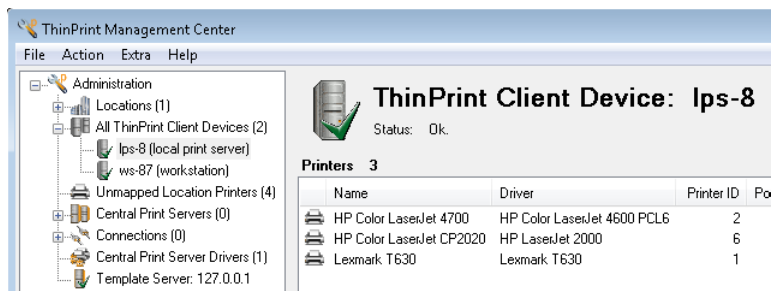
- Enter the workstation's hostname (here: ws-87)
- Click CREATE to confirm
- Click CLOSE

- Select ALL THINPRINT CLIENT DEVICES → GET CONFIGURATION to retrieve the printer lists from the ThinPrint Clients

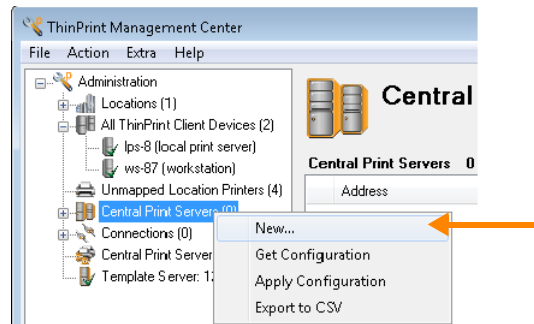


- Click OK to confirm

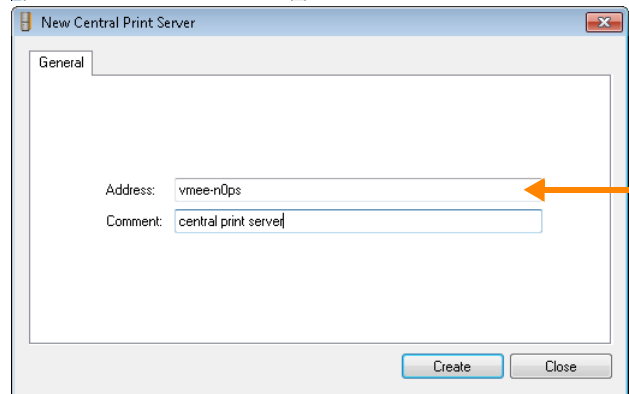
The client printers will be shown.



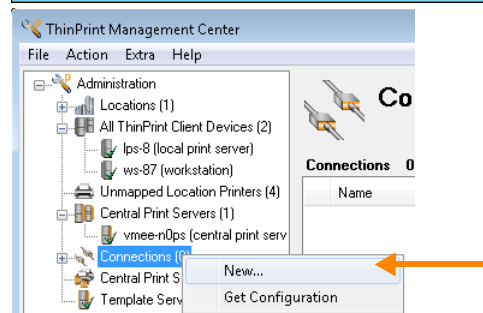
- Select CENTRAL PRINT SERVERS
→ NEW



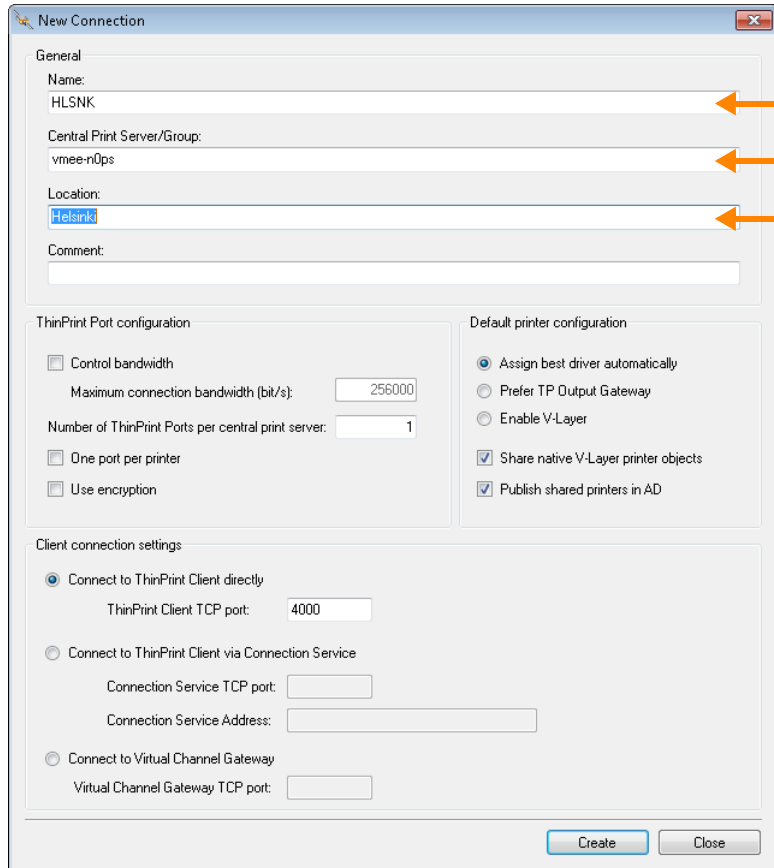
- Enter the central print server's hostname or the IP address (here: vmee-n0ps)
- Click CREATE to confirm
- Click CLOSE



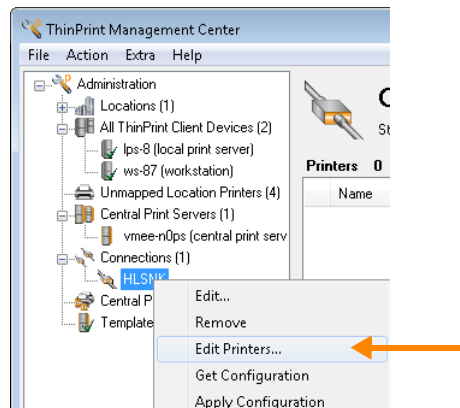
- Select CONNECTIONS → NEW

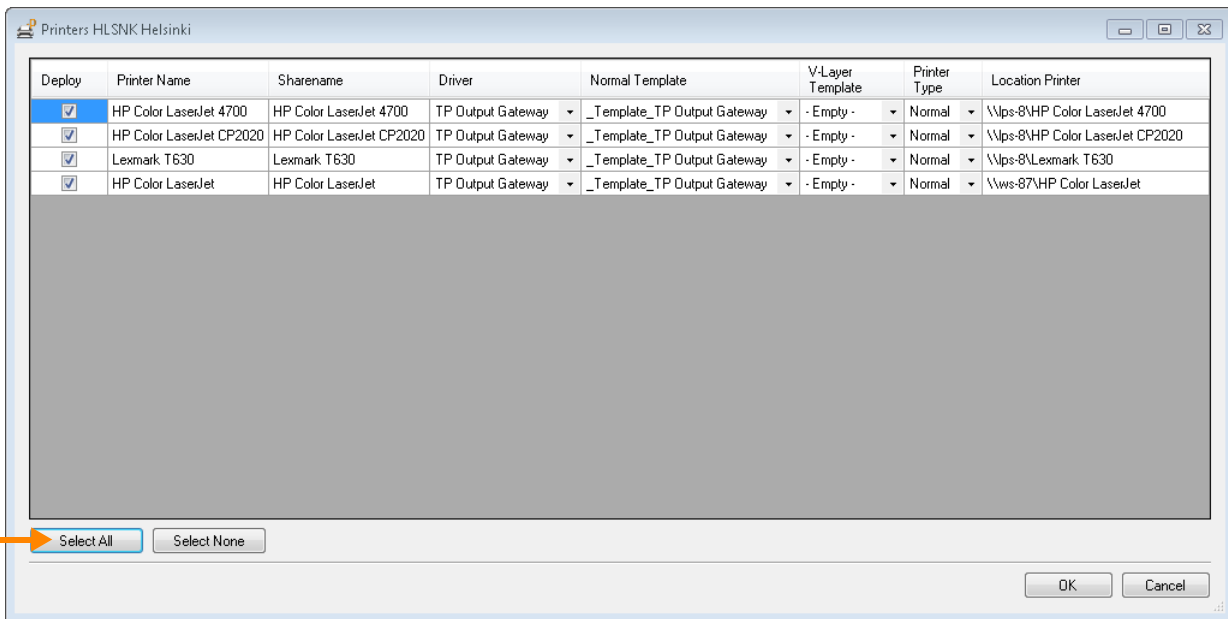


- Enter any name for connection settings (here: HLSNK, maximum 5 characters with Windows 2008 R2 clusters)
- Select the CENTRAL PRINT SERVER
- Select the LOCATION
- Click CREATE to confirm
- Click CLOSE



- Select CONNECTIONS → HLSNK → EDIT PRINTERS



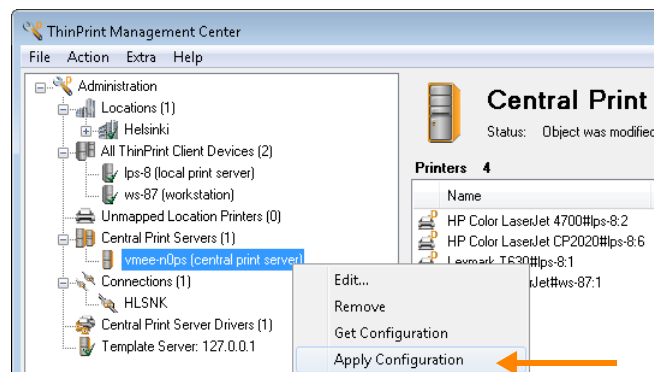


- Click SELECT ALL
- Click OK to confirm

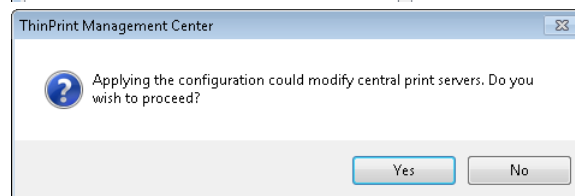
Creating printers on the central print server

Now the just selected printers will be created on the central print server automatically.

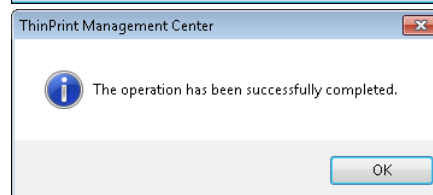
- Select CENTRAL PRINT SERVERS
→ VMEE-NOPS → APPLY CONFIGURATION



- Click YES to confirm

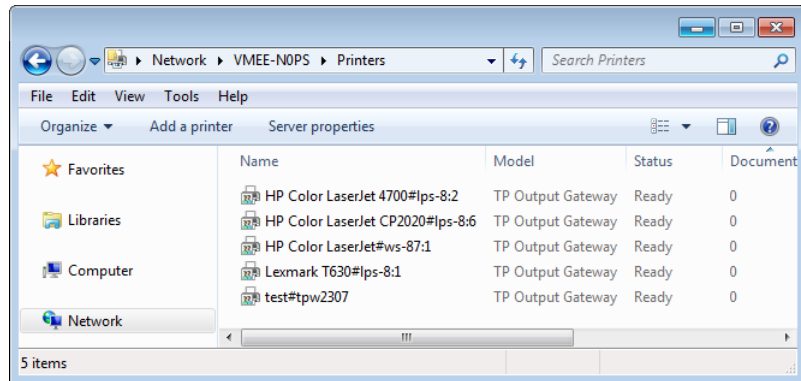


- Click OK to confirm



Result:

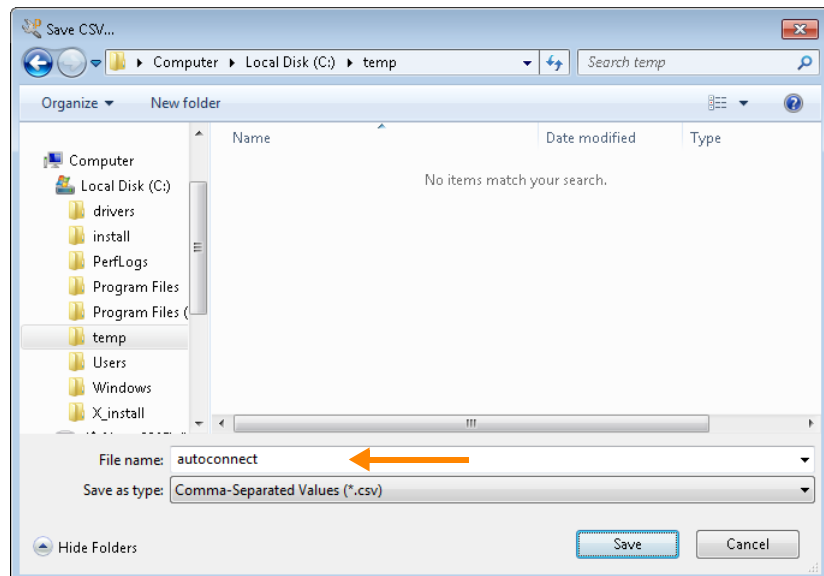
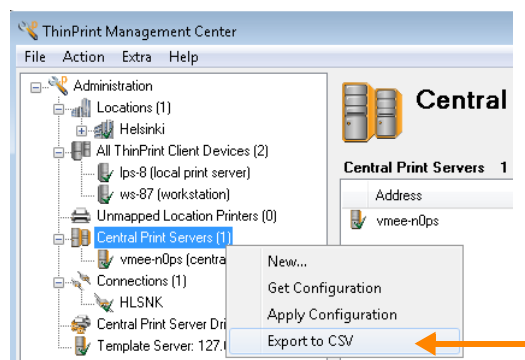
Four printers have been created on the central print server (here: Lexmark and 3 HP)



Configuring AutoConnect

Now the printer information of the Management Center will be exported for AutoConnect's *Dynamic Printer Matrix*.

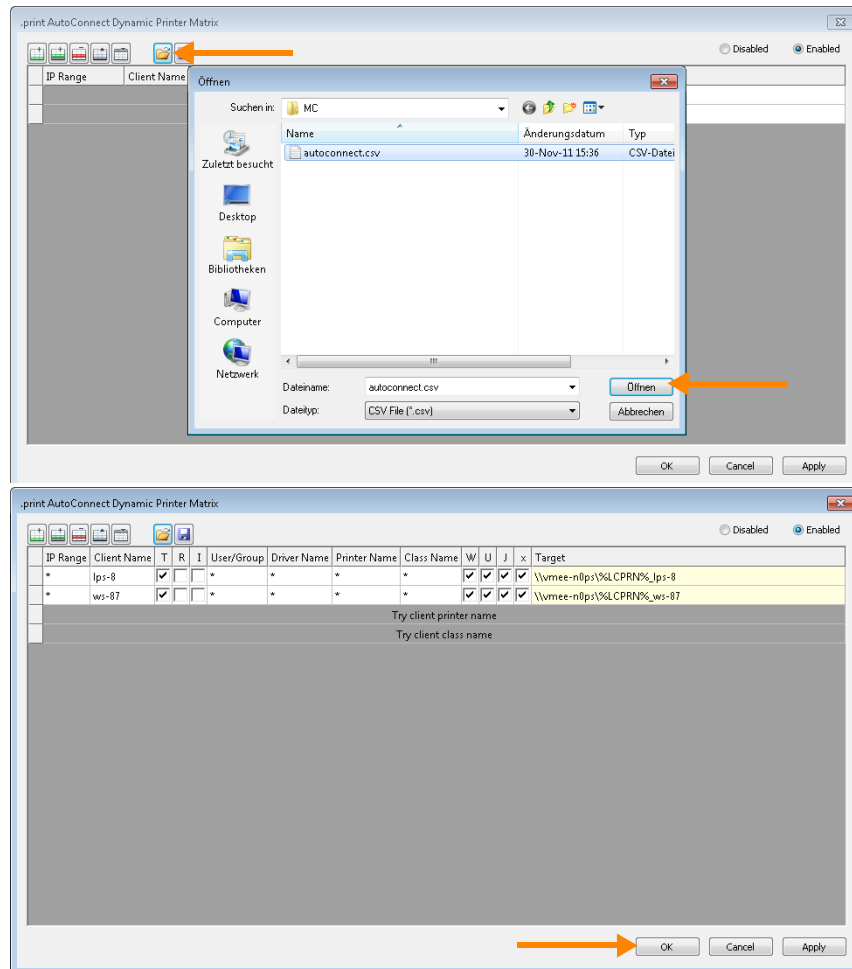
- Select CENTRAL PRINT SERVERS
→ EXPORT TO CSV



- Specify a file name
- Click SAVE to confirm

- Change to the *Dynamic Printer Matrix* on the Active Directory Server
- Select IMPORT CONFIGURATION (upper arrow)
- Select the .csv file and click OPEN to confirm

Caution! An existing configuration will be overwritten.



The new Dynamic Printer Matrix's settings will appear.

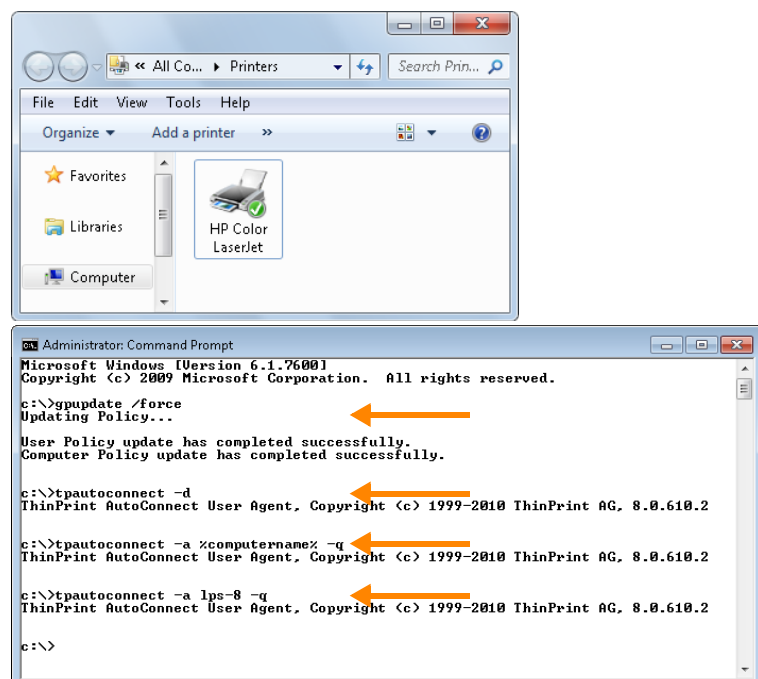
- Click OK to confirm

Printing from the workstation

- Open the workstation's printers folder

Open the Command Prompt and enter the following calls successively:

- gpupdate /force
- tpautoconnect -d
- tpautoconnect -a %computername% -q
- tpautoconnect -a lps-8 -q (= hostname of the local print server)



Result:

The mapped printers will appear in the workstation's printers folder.

- Open an application and print using these printers

