

ThinPrint Engine for VMware View

(version 8.6)

Quick installation

Cortado AG
Alt-Moabit 91 a/b
10559 Berlin
Germany/Alemania

Cortado Pty. Ltd.
L 10, 275 Alfred Street
North Sydney/NSW/2060
Australia

Cortado, Inc.
20006 Detroit Road, Suite 303
Cleveland, OH 44116
USA/EEUU

Cortado, Inc.
7600 Grandview Avenue, Suite 200
Denver, Colorado 80002
USA/EEUU



E-Mail: info@team.cortado.com
Web: www.thinprint.com
Issued: August 16, 2011 (v03)

© Copyright

This document is the intellectual property of Cortado AG. This document may be copied in whole or in part, provided this Copyright notice is included in every copy.

® Registered trade marks

All hardware and software names mentioned in this document are the registered trademarks of their respective companies or should be regarded as such.

Safety warning

All Cortado products are pure software solutions. Please note the safety warnings in the technical documentation from your hardware vendor and from the manufacturer of each device and component. Before beginning installation, we recommend closing all windows and applications and deactivating any virus scanner.

Technical requirements

Be sure that the **TCP port number/s** for printing via TCP/IP is/are not being blocked by another program or by a server-side or client-side firewall. **IPv4** has to be enabled for each involved machine.

ThinPrint Engine

ThinPrint requires the following:

Supported server operating systems

- Windows Server 2003 with Service Pack 2 or later
- Windows Server 2003 x64 with Service Pack 2 or later
- Windows Server 2003 R2 with Service Pack 2 or later
- Windows Server 2003 R2 x64 with Service Pack 2 or later
- Windows Server 2008
- Windows Server 2008 x64
- Windows Server 2008 R2

Also required:

- **.net Framework** with Version 2.0 or later
- With Windows Server 2008 SP1: Microsoft Hotfixes KB958741 (Print Job Owner) and KB958656 (Client Side Rendering)
- For Citrix XenApp: XenApp Web Plugin 11.0.150 or later
- The Windows service *Print Spooler* should not be disabled.

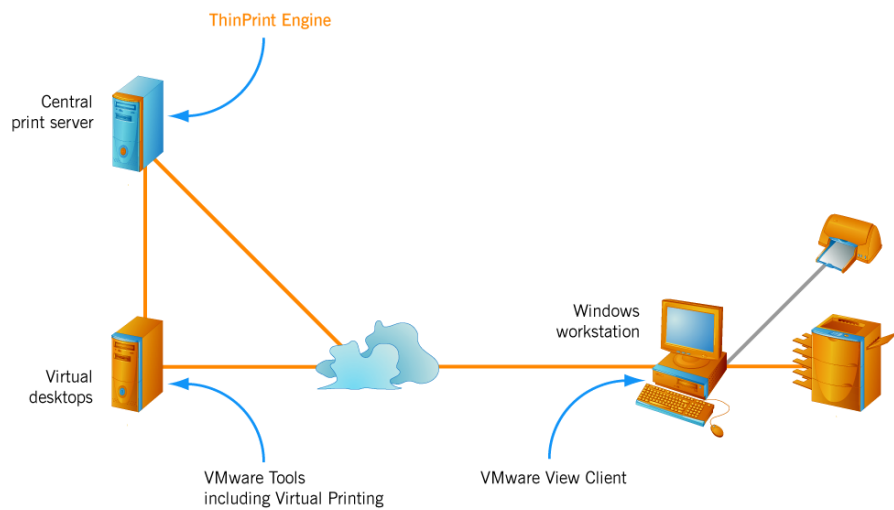
ThinPrint Client

- Workstations or local print servers: Windows 7, 7 x64, Vista, Vista x64, XP, XP x64, 2008, 2008 x64, 2008 R2, 2003, 2003 x64, 2003 R2, 2003 R2 x64
- supported, but with limited functionality, are:
Windows 2000, NT 4, ME, 98, 95 with Windows-Installer version 2.0 and later, Apple MacIntosh, Linux, Java
- Thin clients with embedded ThinPrint Client as well as ThinPrint gateway appliances

Administrator permissions Administrator permissions are required for all installation and configuration procedures. It is therefore best to log on to Windows as ADMINISTRATOR.

Sample scenario

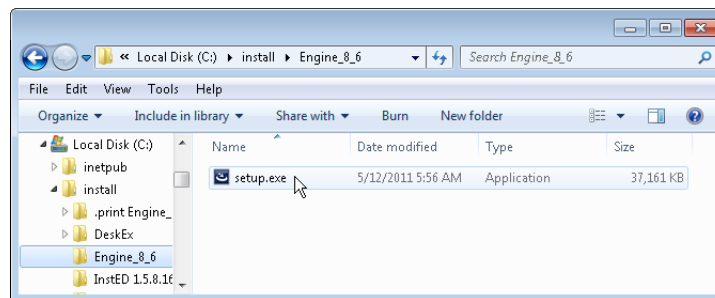
Sample scenario with the ThinPrint components to be installed



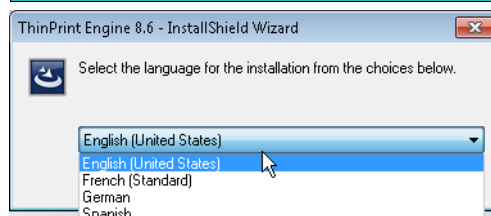
Installing Engine for VMware View on a central print server

Note! Before beginning installation, we recommend closing all windows and applications and deactivating any virus scanner.

- Start ThinPrint Engine installation program SETUP.EXE

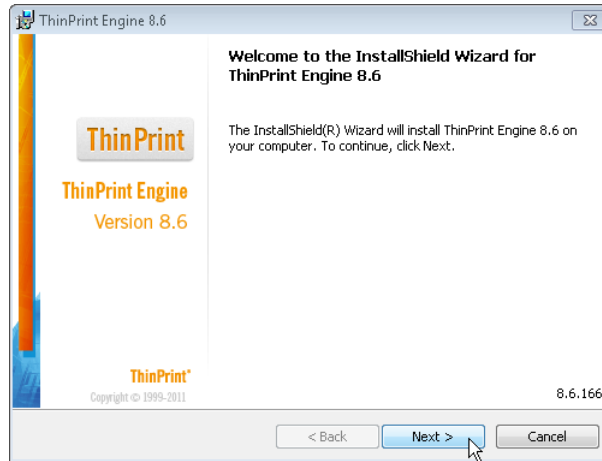


- Select a language
- Click OK

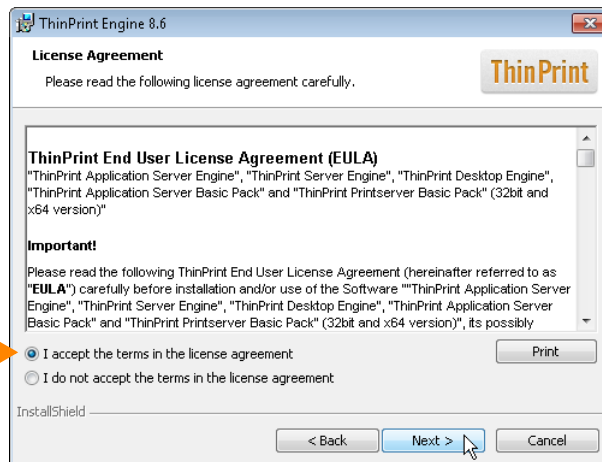


A reboot may be required if Windows Installer 4.5 was not installed before installation (in this case, Windows Installer 4.5 will be installed automatically).

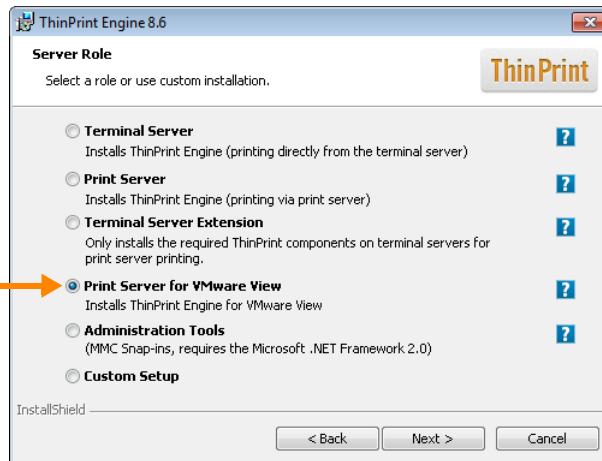
- InstallShield Wizard opens. Click NEXT



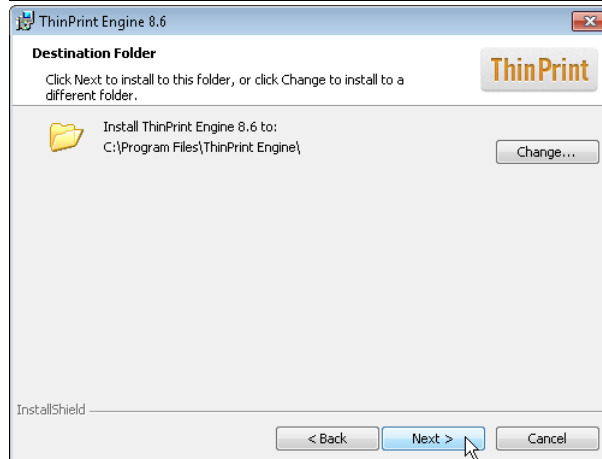
- Read the license agreement and accept it
- Click NEXT



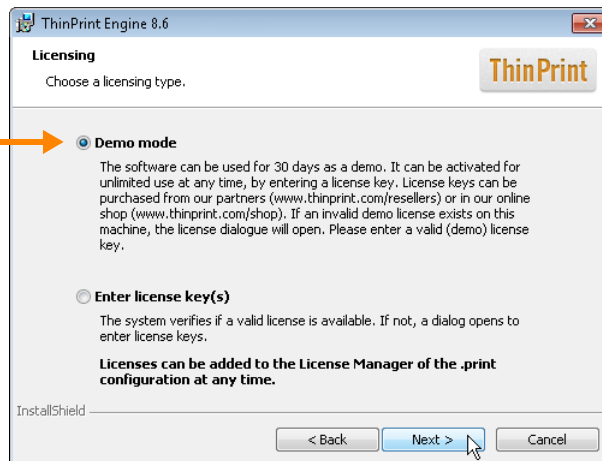
- Select PRINT SERVER FOR VMWARE VIEW
- Click NEXT



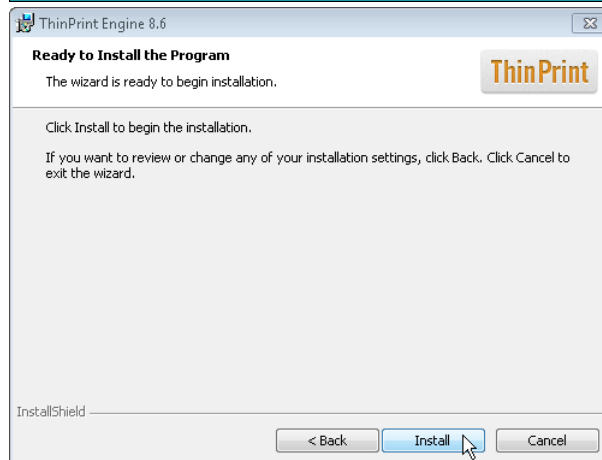
- Confirm installation folder with NEXT



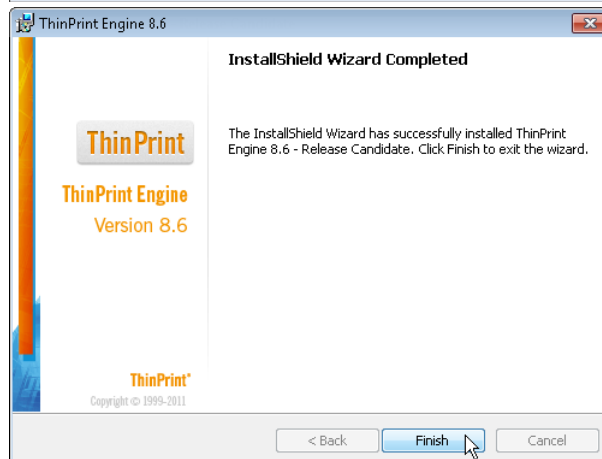
- Select DEMO MODE
- Click NEXT



- Click INSTALL



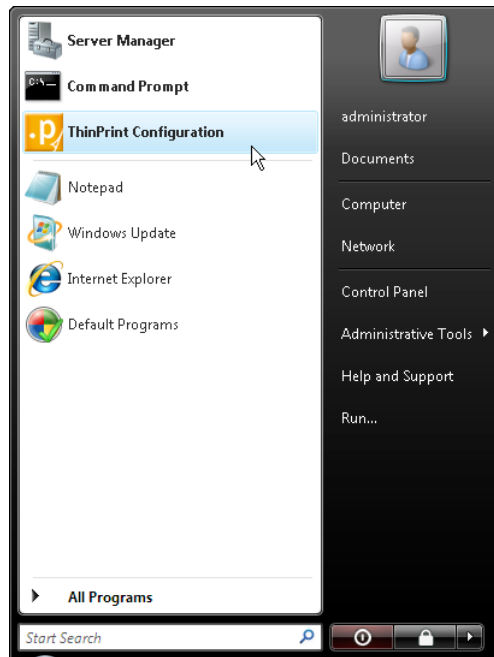
- Click FINISH



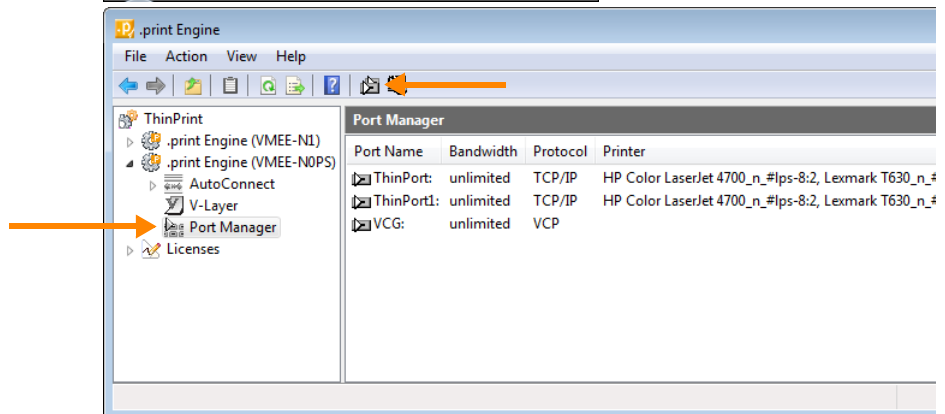
Here, a server reboot is required.

Creating ThinPrint Ports and printers on the print server

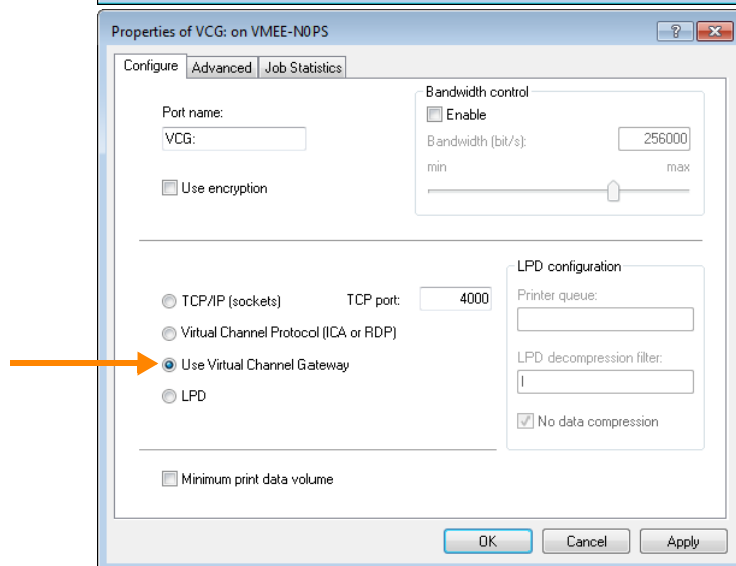
- Start ThinPrint Configuration



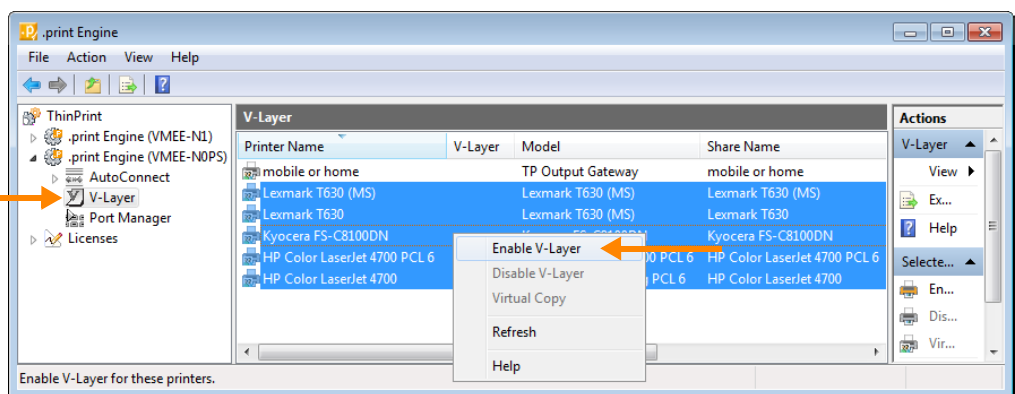
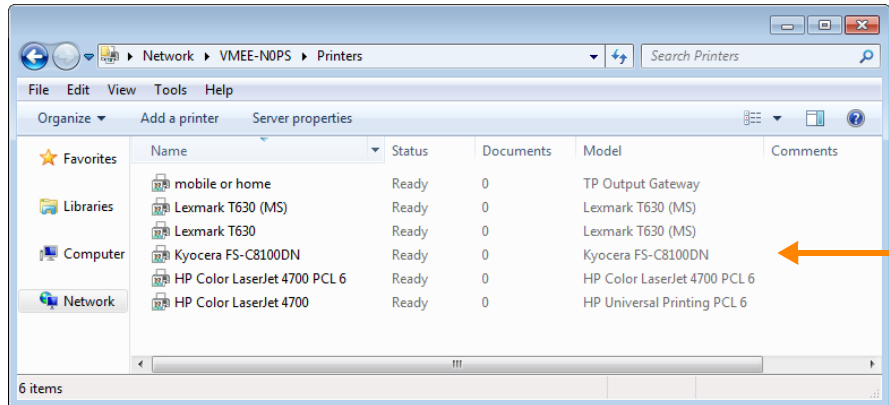
- Add a ThinPrint Port



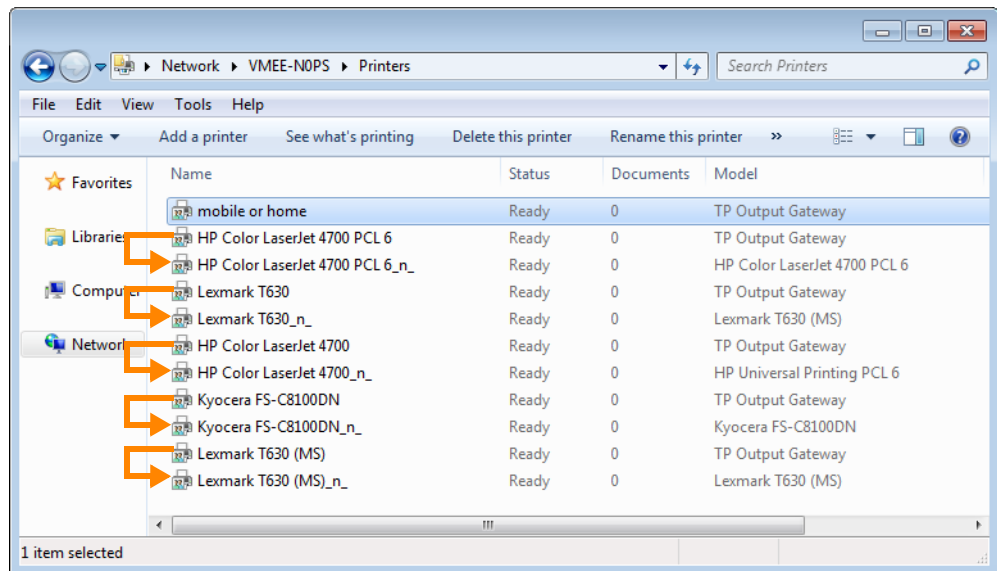
- Select USE VIRTUAL CHANNEL GATEWAY
- Click OK



- Create a printer with a native driver for each printer model of the workstation and connect it to the new ThinPrint Port
- Do not specify printer IDs!
- Share these printers: share name = printer name



- ENABLE V-LAYER for all printers with use a native driver



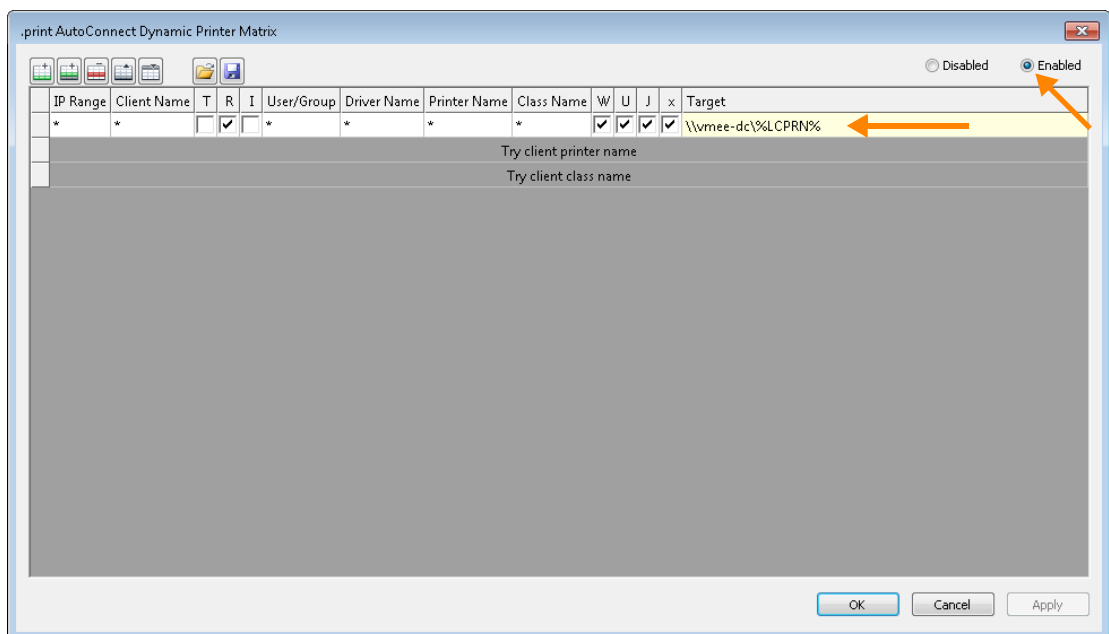
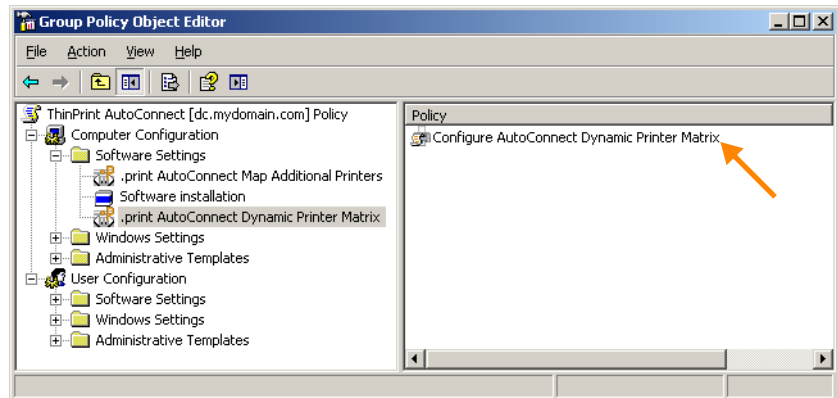
V-Layer printer pairs on the central print server (arrows show the path of the print data)

Installing the AutoConnect GPO component

- Copy GPO AutoConnect installer Setup.exe (provided with Engine for VMware View) onto the machine on which you wish to edit your group policies. The machine must be a domain member. Run the installer.

Configuring AutoConnect in the Active Directory

- Open the Group Policy Object Editor for Dynamic Printer Matrix



- Enable the matrix, add a row and enter in the TARGET column:
`\\server-address\share-name`, here:
`\\vmee-dc%\%LCPRN%`
- Limit the rule to RDP (column R). Click OK

- Perform an update of the group policy for the virtual desktops.
- Start a session on a virtual desktop and perform test prints on the automatically mapped printers (see below).

Printers in a session
mapped by AutoCon-
nect

