



.print Desktop Engine

(version 7.6; 32 bit and x64)

Quick installation

ThinPrint AG
Alt-Moabit 91 a/b
10559 Berlin
Germany/Alemania

ThinPrint Pty. Ltd.
L 10, 275 Alfred Street
North Sydney/NSW/2060
Australia

ThinPrint, Inc.
20006 Detroit Road, Suite 303
Cleveland, OH 44116
USA/EEUU

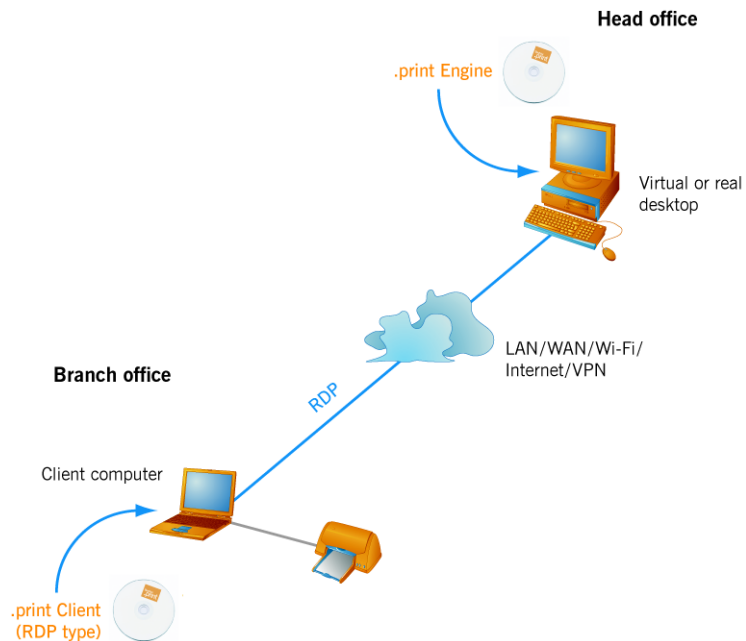
ThinPrint, Inc.
7600 Grandview Avenue, Suite 200
Denver, Colorado 80002
USA/EEUU



E-mail: info@thinprint.com
Web: www.thinprint.com

Issued: March 25, 2010 (v04)

Plug&play installation of .print Engine and .print Client

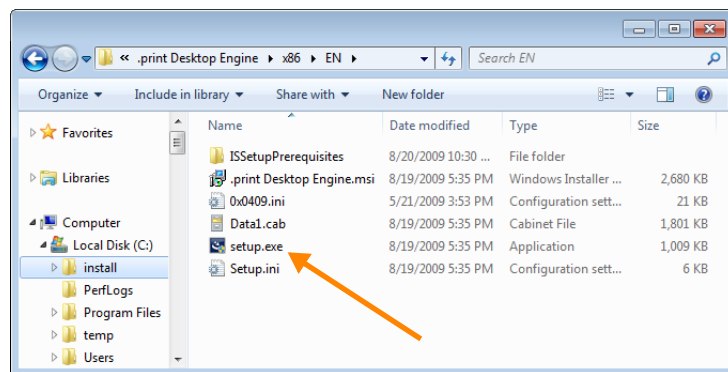


Illus. 1 Plug&play installation of .print Engine and .print Client

Note! Before beginning installation, we recommend closing all windows and applications and deactivating any virus scanner. Also be aware that after installation of .print Engine a Windows restart could be necessary.

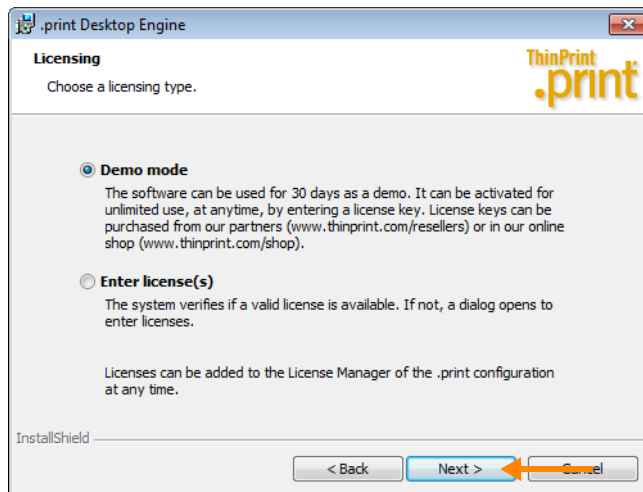
.print Engine installation

1. Copy the .print Engine software to the virtual or real **desktop's** hard disk and start **Setup.exe** (Illus. 2).



Illus. 2 Starting installation program Setup.exe

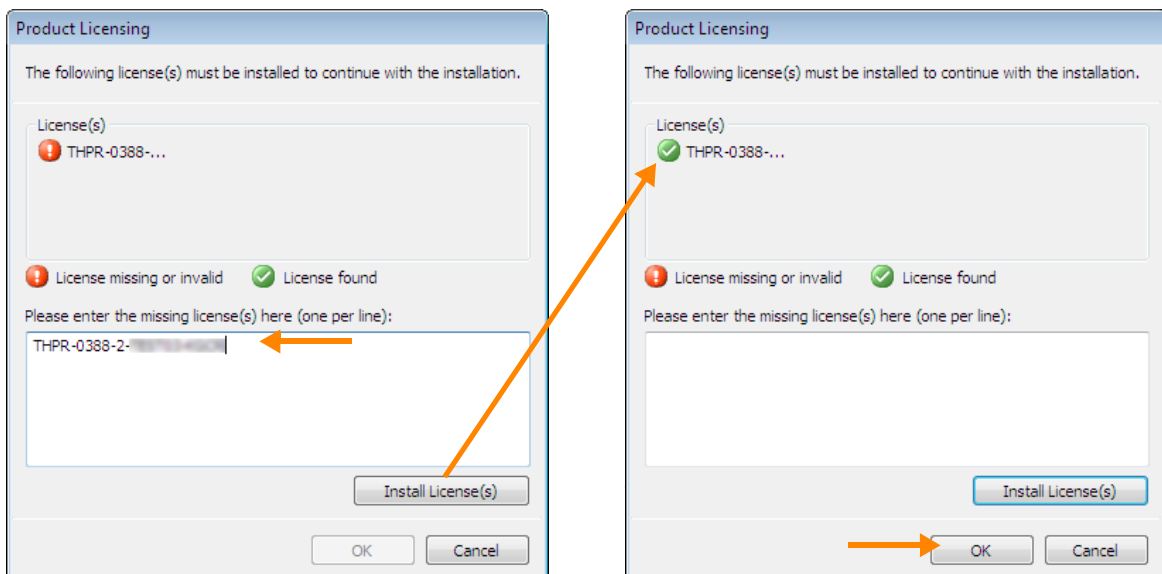
2. Click OK to confirm the Welcome window.
3. Read the license agreement, accept it, and click NEXT to confirm. The menu in Illus. 3 will open.
4. To enter a license key select **INSTALL LICENSE(S)**, click **NEXT** to confirm and continue with step 5. If you have not yet obtained a license key, then select **DEMO MODE**, click **NEXT** to confirm and continue with step 6.



Illus. 3 No license key available? If so select DEMO MODUS. Otherwise select ENTER LICENSE(S).

Register a License Key

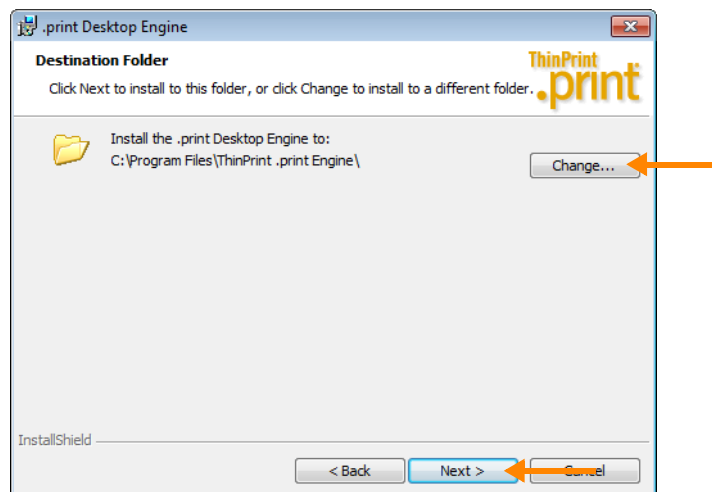
5. In the next window, copy your license key for .print Desktop Engine in the white field on the left in Illus. 4 and click INSTALL LICENSE(S).



Illus. 4 enter license key: copy licence into the white field, click INSTALL LICENSE(S) and confirm with OK

That causes the exclamation mark in the red circle to change to a checkmark in the green circle (above right in Illus. 4). Click OK to continue.

6. In the next dialog box you can select the installation path by clicking on CHANGE (Illus. 5). Click NEXT to continue.



Illus. 5 Choose an installation path

7. Click on **INSTALL** in the next dialogue box to start the actual installation process. Click **FINISH** to close the last window. Windows XP requires a reboot here.

.print Client installation

1. Install at least one printer on the **client computer** (Illus. 6).

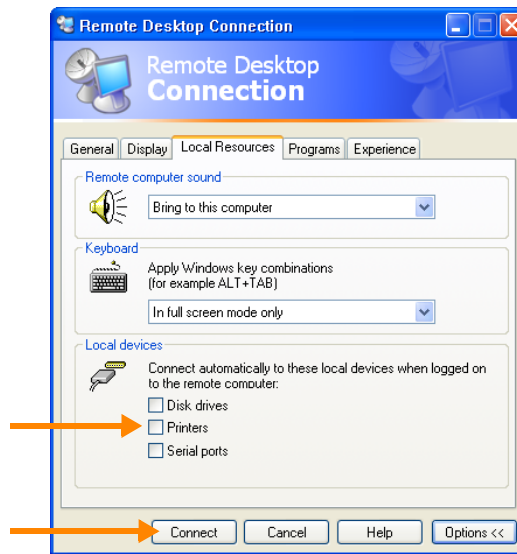


Illus. 6 Client computer's Printers folder

2. Copy the .print Client software to the client computer's hard disk. With Windows XP, Vista and 7, start **TPRDP_x86_enu.msi** (32 bit) or **TPRDP_x64_enu.msi** (64 bit).
3. Click **OK** to confirm the Welcome window.
4. Read the license agreement, accept it, and click **NEXT** to confirm.
5. Enter your user information, and click **NEXT** to confirm.
6. In the next dialogue box you can select the installation path by clicking on **CHANGE**. Click **NEXT** to continue.
7. Click **INSTALL** in the next dialogue box to start the actual installation process. Click **FINISH** to close the last window.

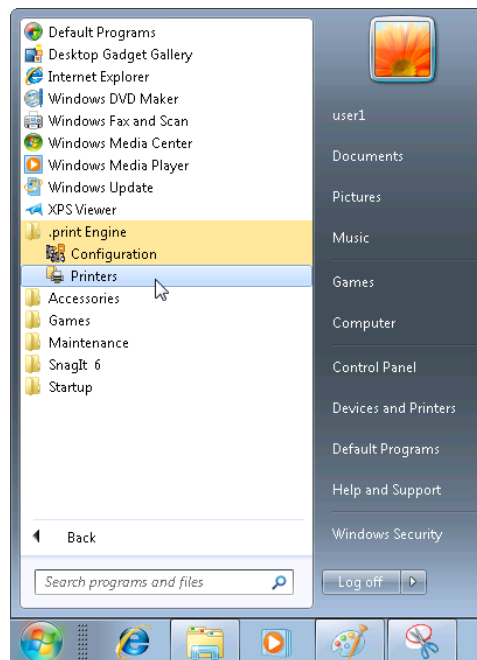
Printing a test page

8. Start a desktop session from the client computer without enabling the local printers of RDP protocol (Illus. 7). Click **CONNECT** to confirm.

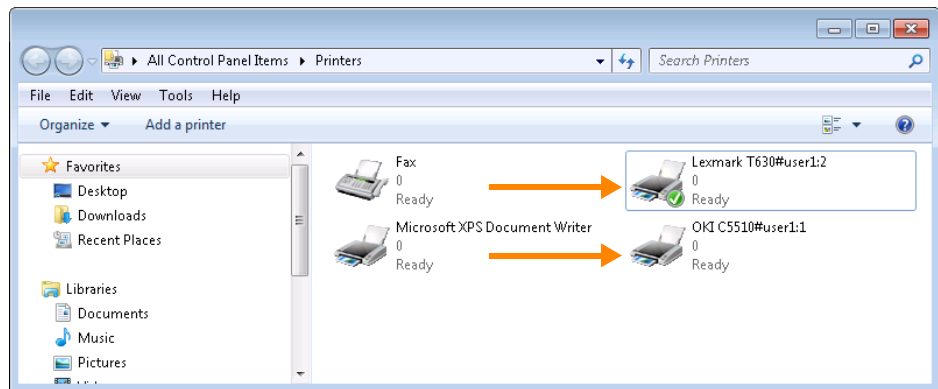


Illus. 7 Starting a desktop session

9. In the desktop session open the Printers folder – with Windows 7 using START → ALL PROGRAMS → .PRINT ENGINE → PRINTERS (Illus. 8), otherwise using START → SETTINGS → PRINTERS (AND FAXES).

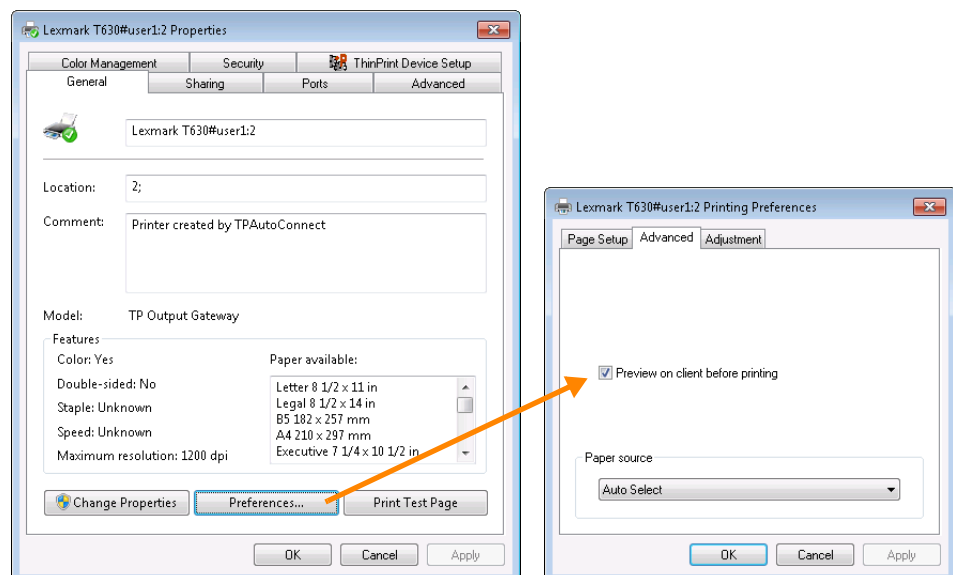


Illus. 8 Open the Printers folder (Windows 7)



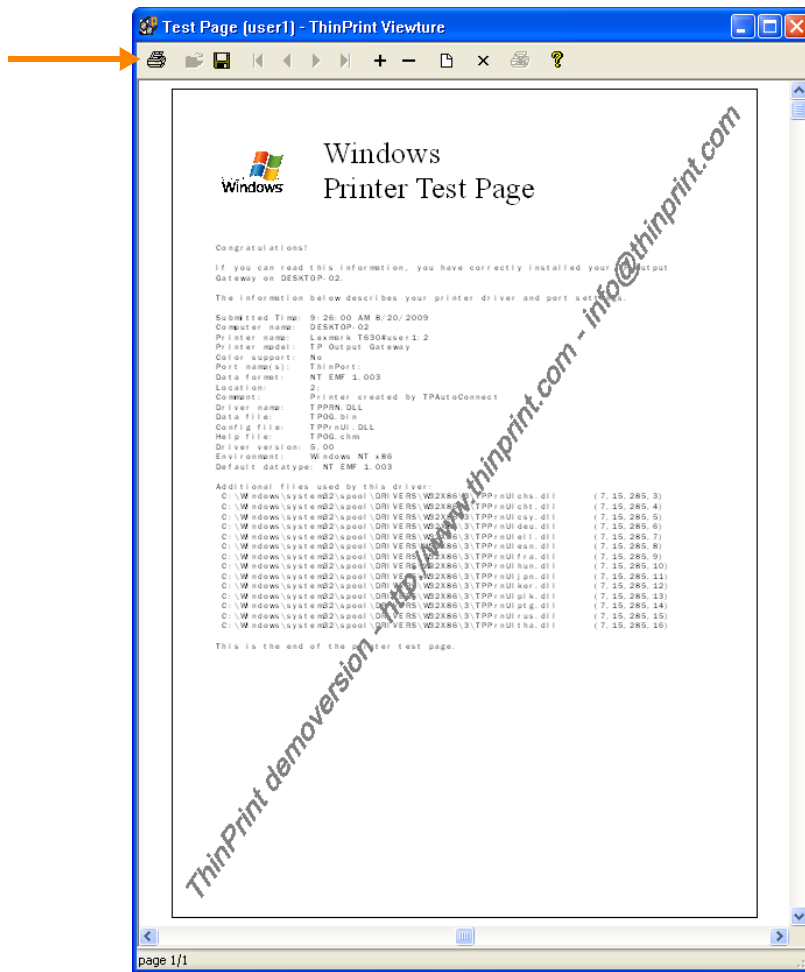
Illus. 9 Printers in the desktop session created by .print AutoConnect

10. Enable a preview for one of the printers using **PROPERTIES** → **PREFERENCES** → **ADVANCED** → **PREVIEW ON CLIENT BEFORE PRINTING** (Illus. 10). Click OK to confirm.



Illus. 10 Enabling a preview on the client computer

11. Click on the **PRINT TEST PAGE** button to print a test page (Illus. 10). The preview is shown in Illus. 11. Click on the print button here.



Illus. 11 Windows test page received on the client computer

Customer service and technical support

Customer Service www.thinprint.com → SUPPORT
support@thinprint.com

Manuals The .print Desktop Engine manual and the .print Client user manuals are available at www.thinprint.com/ → PRODUCTS → OVERVIEW → .PRINT DESKTOP ENGINE.