

ThinPrint Application Server Engine

(version 8.6)

Quick installation

Cortado AG
Alt-Moabit 91 a/b
10559 Berlin
Germany/Alemania

Cortado Pty. Ltd.
L 10, 275 Alfred Street
North Sydney/NSW/2060
Australia

Cortado, Inc.
20006 Detroit Road, Suite 303
Cleveland, OH 44116
USA/EEUU

Cortado, Inc.
7600 Grandview Avenue, Suite 200
Denver, Colorado 80002
USA/EEUU

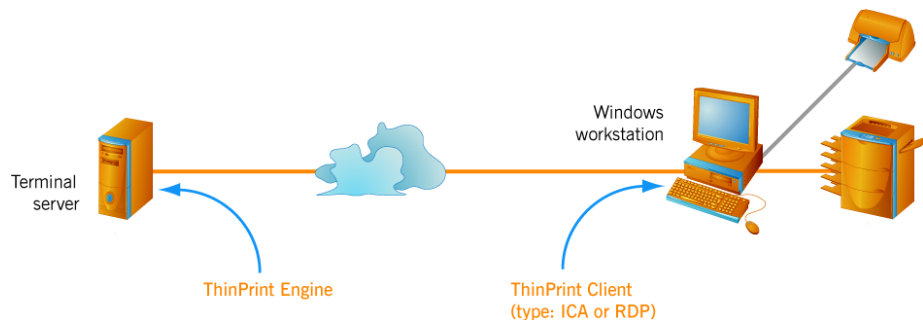


E-Mail: info@team.cortado.com
Web: www.thinprint.com
Issued: Juli 27, 2011 (v34)

Installation

Sample scenario

Sample scenario with the ThinPrint components to be installed

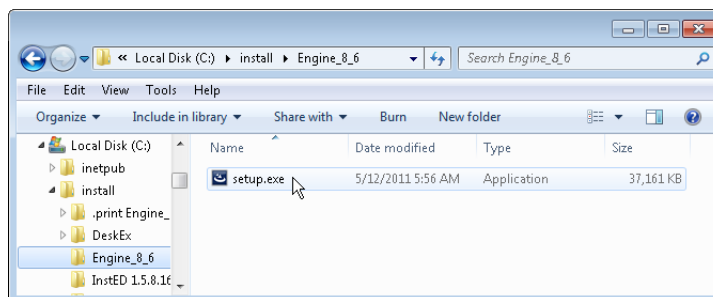


Installing ThinPrint Engine on a terminal server

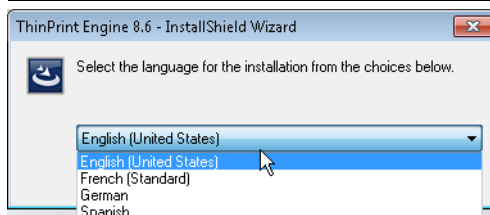
- Installation on Windows terminal server(s)

Note! Before beginning installation, we recommend closing all windows and applications and deactivating any virus scanner. Also be aware that after installation ThinPrint Engine will only become functional after a Windows restart.

- Start ThinPrint Engine installation program SETUP.EXE

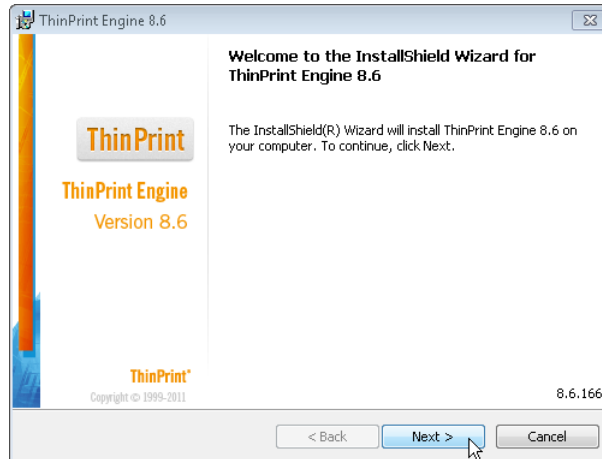


- Select a language
- Click OK

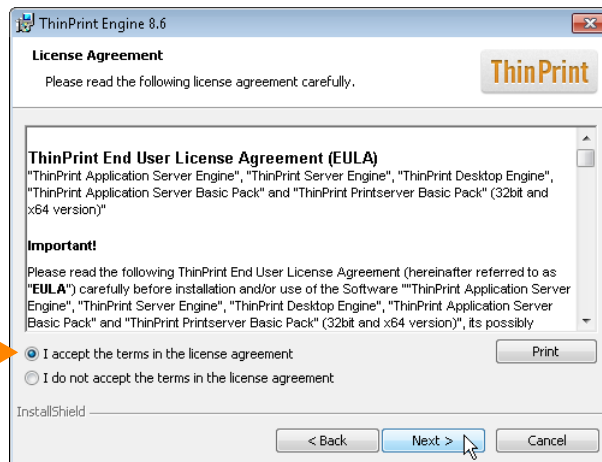


A reboot may be required if Windows Installer 4.5 was not installed before installation (in this case, Windows Installer 4.5 will be installed automatically).

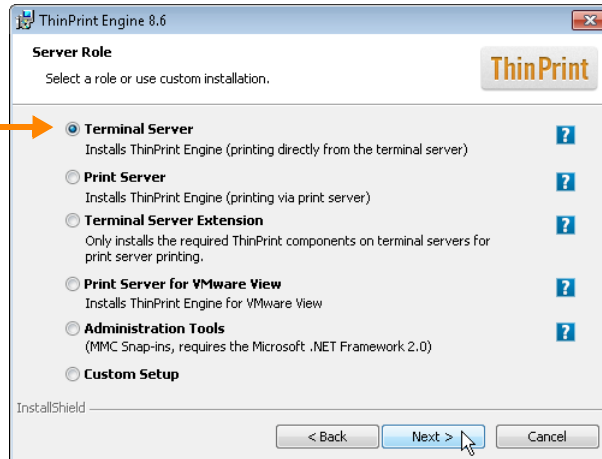
- InstallShield Wizard opens.
Click NEXT



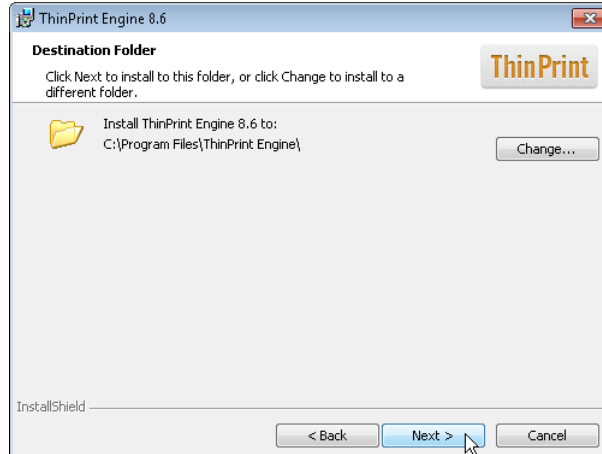
- Read the license agreement and accept it
- Click NEXT



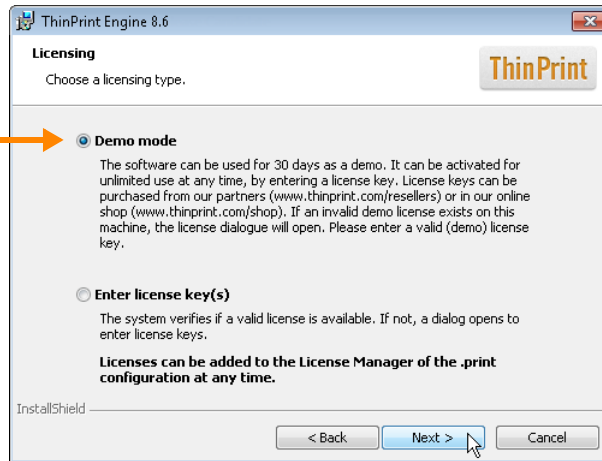
- Select
TERMINAL SERVER
- Click NEXT



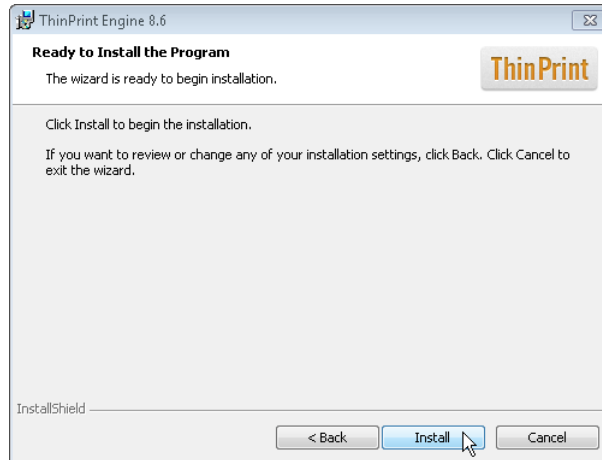
- Confirm installation folder with NEXT



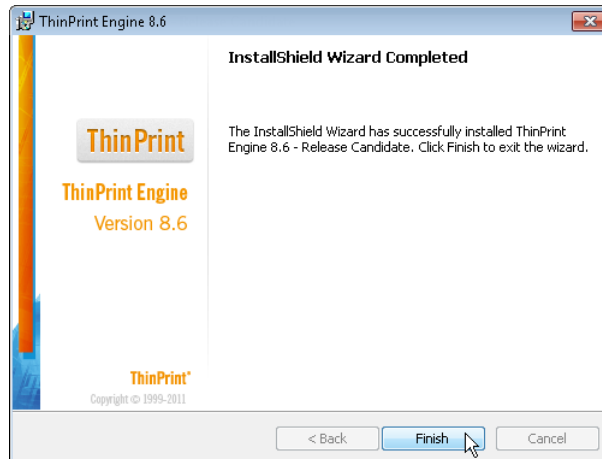
- Select DEMO MODE
- Click NEXT



- Click INSTALL



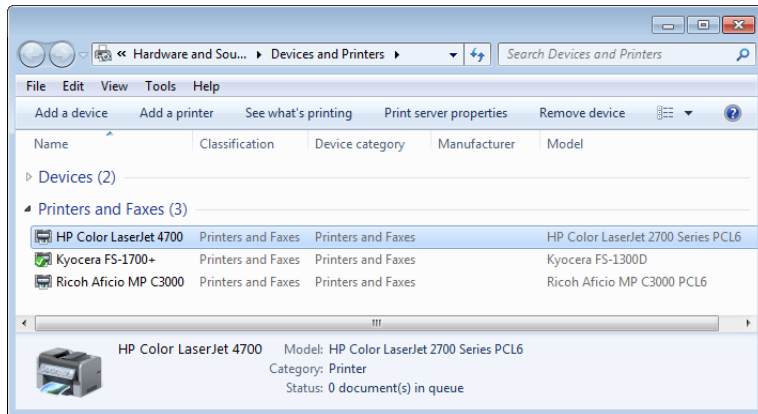
- Click FINISH



Here, a server reboot is required.

Installing ThinPrint Client on a Windows PC

- Printer installed?
- Feel free to install several printers, as many as you like – including network printers, multi-functional devices, ink-jets ...

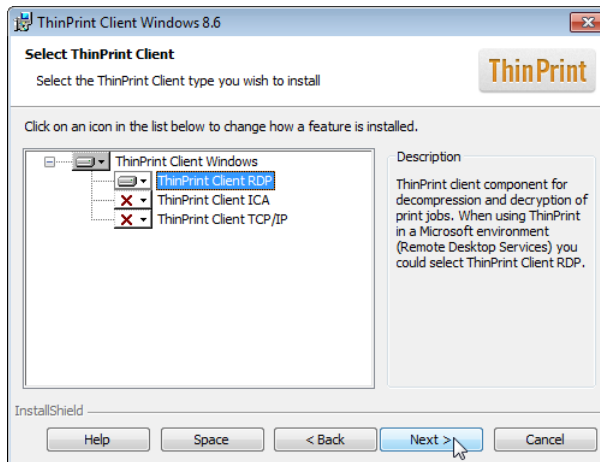


Note! Local admin permissions are necessary on the client to install ThinPrint Client Windows.

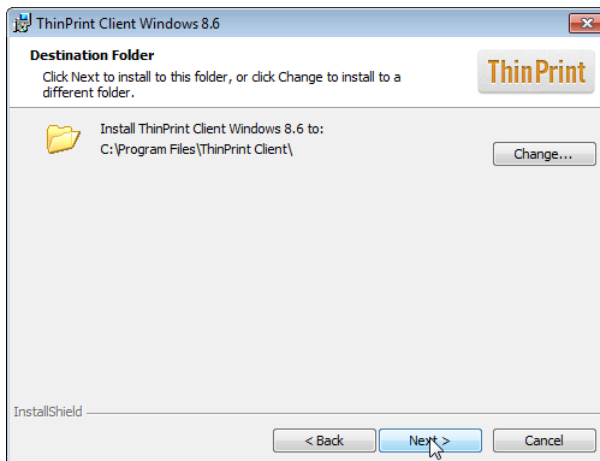
*ThinPrint Client
Windows
installation*

1. Start the ThinPrint Client installation program SETUP.EXE.
2. Choose the language you want and click OK to confirm. InstallShield Wizard opens. Click NEXT.
3. Read the License Agreement and accept its terms.

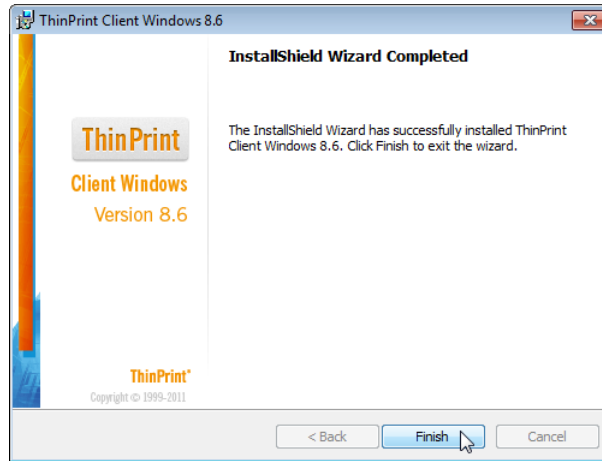
- Confirm ThinPrintClient RDP and click NEXT



- Confirm the installation path and click NEXT and afterwards INSTALL



- Confirm by clicking FINISH



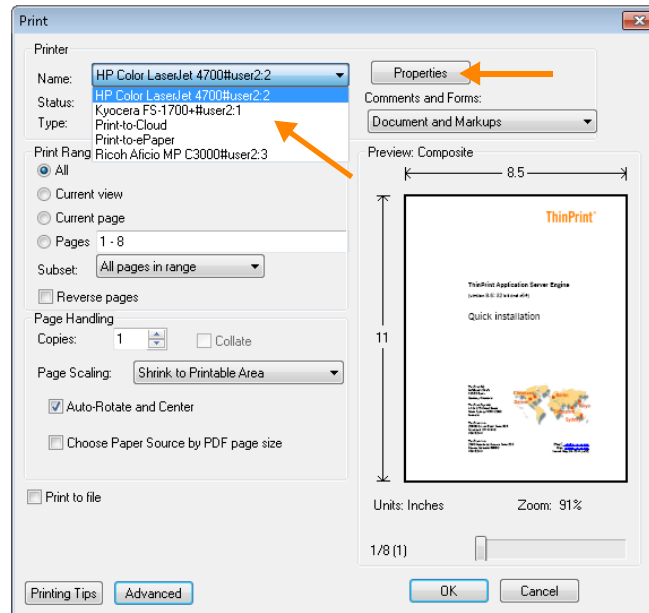
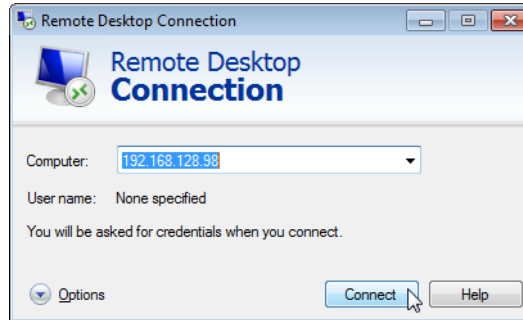
Printing

Printing from a session

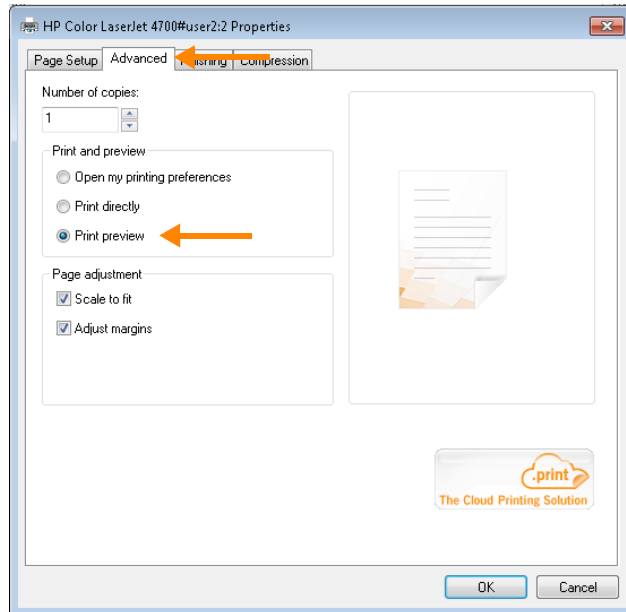
- Start a terminal session from the client
- Open a document and click PRINT

Auto-created client printers in the terminal session.

- Select a printer
- Click PROPERTIES



- Click ADVANCED and select PRINT PREVIEW
- Click OK (twice)



Print job appears in a preview on client machine.

- Print locally

