

ThinPrint for Windows Small Business Server 2003 and 2008

Printing from Remote Web Workplace

ThinPrint in a nutshell

Cortado AG
Alt-Moabit 91 a/b
10559 Berlin
Germany/Alemania

Cortado Pty. Ltd.
L 8, 275 Alfred Street
North Sydney/NSW/2060
Australia

Cortado, Inc.
20006 Detroit Road, Suite 303
Cleveland, OH 44116
USA/EEUU

Cortado, Inc.
7600 Grandview Avenue, Suite 200
Denver, Colorado 80002
USA/EEUU



E-mail: info@team.cortado.com
Web: www.thinprint.com
Issued: September 6, 2011 (v21)

Introduction

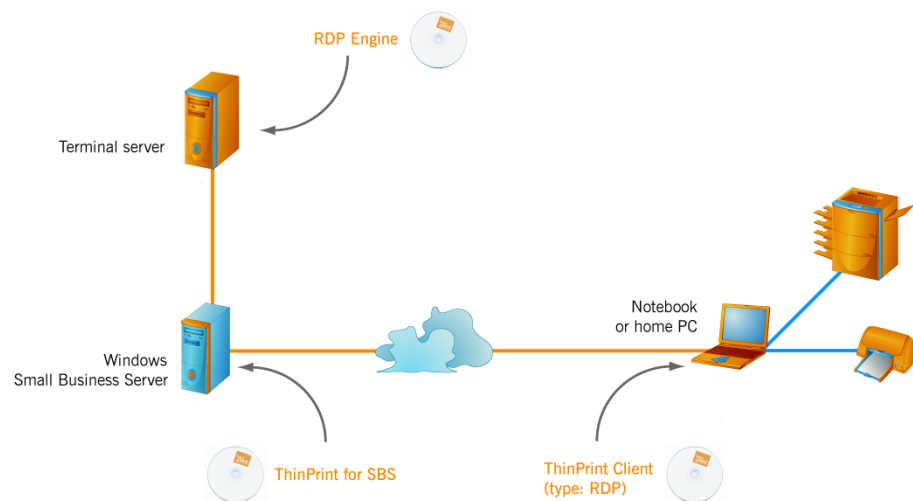
The **Windows Small Business Server** and its **Remote Web Workplace** function enables all employees to securely access company computers over the internet, making it easy to work from home or while on the go. You can always work on the same desktop and in the same computer environment (Illus. 1 and 2).

ThinPrint also makes printing from the Remote Web Workplace quick and easy. The print data are transmitted at high compression and thus reach the printer faster – with a notebook while on the go or on a private PC at home. And with DRIVER FREE PRINTING technology it doesn't matter which printer you use at home because neither the Small Business Server nor the terminal server or the workplace computer in the company requires a printer driver.

Simply launch the Web browser on the notebook or the home PC and go to the Web address of your company's Small Business Server.

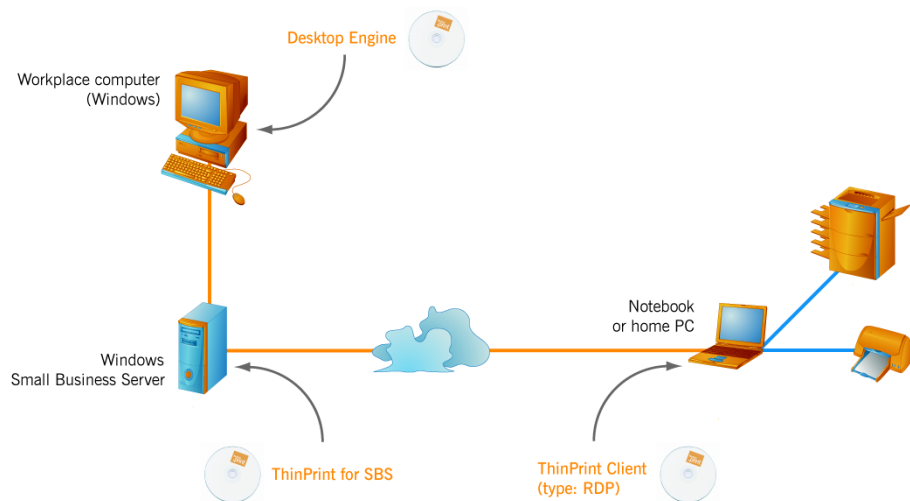
To make your computer environment ThinPrint capable, install the following ThinPrint components (all three are Plug & Play):

- **ThinPrint RDP Engine 7.6.x** on every terminal server (Illus. 1) or **ThinPrint Desktop Engine 7.6.x** on every workplace computer (Illus. 2)
- **ThinPrint for SBS** or **ThinPrint for SBS x64** on the Small Business Server 2003 or 2008
- **ThinPrint Client (RDP type)** on the notebooks or home PCs¹ (i.e. remote clients)



Illus. 1 Installing ThinPrint components in an SBS environment with a terminal server as Remote Web Workplace (example)

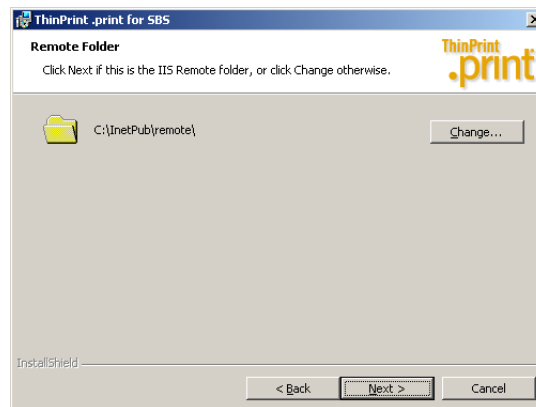
¹ Alternative: thin clients with embedded ThinPrint Client (RDP type)



Illus. 2 Installing ThinPrint components in an SBS environment with a workplace computer as Remote Web Workplace (example)

Installing the ThinPrint components

- Step 1**
- Provide a **Windows Small Business Server 2003** or **2008**.
 - Set up the Remote Web Workplace for the users (ADD A NEW USER ACCOUNT or SET UP NETWORK COMPUTER ACCESS in the Server Management of the Small Business Server). Enable also USER CAN ACCESS REMOTE WEB WORKPLACE.
- Step 2**
- Download the product package **RDP Engine** or **Desktop Engine** from the ThinPrint web site. It contains the ThinPrint components listed above.
- Step 3**
- Install the **RDP Engine** or **Desktop Engine** software on the terminal servers (Windows 2008 or 2003) or workplace computers (Windows 7, Vista or XP) with the **setup program** and follow the instructions of the setup program. During installation, enter one (demo) **license key** on each machine if required. More information about the installation can be found in the “ThinPrint RDP Engine” manual (free download at www.thinprint.com → PRODUCTS → OVERVIEW → RDP ENGINE → DEMO VERSION) or in the “ThinPrint Desktop Engine” manual (... → DESKTOP ENGINE → DEMO VERSION).
- Step 4**
- Select the file **ThinPrint .print for SBS.msi** on a Small Business Server 2003 or the file **ThinPrint .print for SBS_x64.msi** on a Small Business Server 2008. If required, confirm the path to the IIS Remote directory (where the file `tweb.aspx` is located), or enter a different one (Illus. 3).

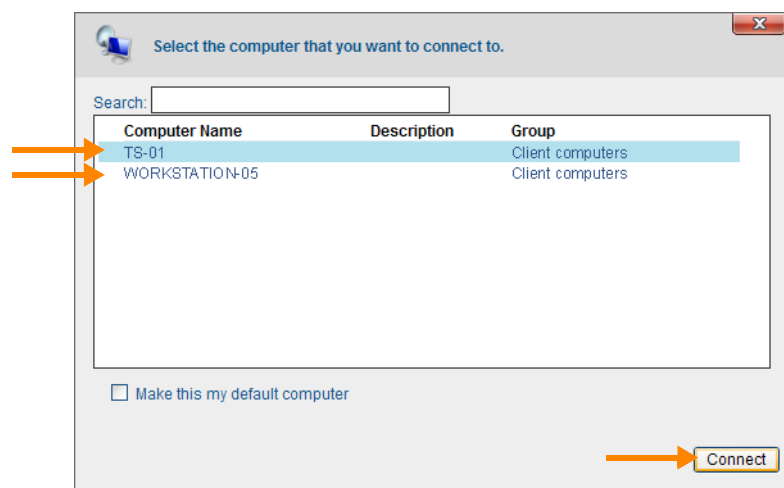


Illus. 3 Path to the IIS Remote directory (default: c:\inetpub\remote)

- Step 5**
- Install the **ThinPrint Client** (RDP type) on the notebooks or home PCs (required operating system: Windows 7, Vista or XP). More information about the installation can be found in the manual of the respective ThinPrint Client (see www.thinprint.com → PRODUCTS → OVERVIEW → RDP ENGINE → MANUALS). Alternative thin clients: At www.thinprint.com/Products/Overview/Support-edthinclients.aspx you will find thin clients with embedded RDP type of ThinPrint Client.
 - Simply launch the Web browser on the notebook or the home PC and go to the Web address of your company's Small Business Server. Best use the internet domain name of the Small Business Server, for example:
`https://remote.servername.com`
 Log on and select CONNECT TO A COMPUTER (Illus. 4).

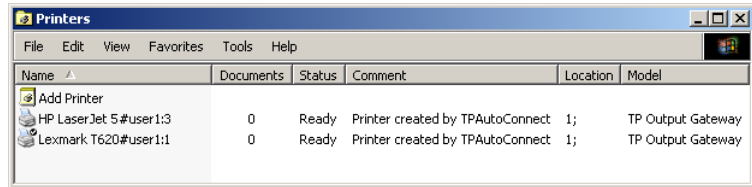
Printing

- As a remote user, open the Web site of the Small Business Server on your notebook or home PC, select CONNECT TO A COMPUTER.
- Select your terminal server or workplace computer (Illus. 4), and click CONNECT. The login screen of your terminal server or workplace computer will appear.



Illus. 4 Small Business Server's web site: Select your machine and click CONNECT

- After logging in, you will find all the notebook's or remote PC's printers in the remote desktop's PRINTERS AND FAXES folder (Illus. 5). The printer names are given your user name; e.g., "user1".



Illus. 5 Printers from "user1" on the remote desktop (example)

- Open an application and print using these printers. In the printer properties you can also select a client-side preview.