

.print Client WinCE

.print version 5.5 (for Windows CE through version 5.x)

Manual

ThinPrint AG
Alt-Moabit 91 a/b
10559 Berlin
Germany/Alemania

ThinPrint Pty. Ltd.
L 10, 275 Alfred Street
North Sydney/NSW/2060
Australia

ThinPrint, Inc.
20006 Detroit Road, Suite 303
Cleveland, OH 44116
USA/EEUU

ThinPrint, Inc.
7600 Grandview Avenue, Suite 200
Denver, Colorado 80002
USA/EEUU



E-mail: info@thinprint.com
Web: www.thinprint.com
Issued: July 7, 2009 (v13a)

© Copyright

This document is the intellectual property of ThinPrint AG. This document may be copied in whole or in part, provided this Copyright notice is included in every copy.

® Registered trade marks

All hardware and software names mentioned in this document are the registered trademarks of their respective companies or should be regarded as such.

Safety warning

All ThinPrint products are pure software solutions. Please note the safety warnings in the technical documentation from your hardware vendor and from the manufacturer of each device and component. Before beginning installation, we recommend closing all windows and applications and deactivating any virus scanner.

How to use this manual

The following conventions are used throughout this manual to represent recurring actions and text types.

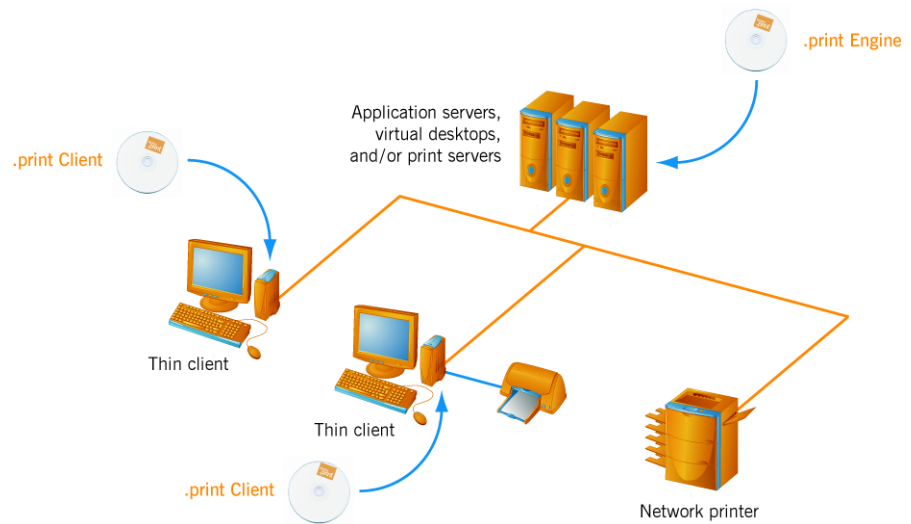
Conventions

Note!	Important tip, explanation, exception
SMALL CAPS	Menu, command, dialog panel, option
<i>Italic</i> "Name"	Proper name, emphasis, variable
Courier	Keyboard input
→	Consecutive menu or command
■	Enumeration, head note
Example	Example
–	Procedural steps
1.	
2.	
Page 5	Links
www.thinprint.com	

Overview	4
Server component	4
Client component	5
.print Client installation	5
.print Client configuration	6
Starting .print Client	6
Configuration	6
“Setup” tab	6
“Assignment” tab	7
“Advanced” tab	8
Preparing .print Engine for LPD printing	9
Appendix	10
Customer service and technical support	10
.print Client uninstallation	10
Additional sources	11
.print Clients and supported features	12

Overview

ThinPrint .print is a software solution for comfortable print management. It consists of a server and a client component (Illus. 1).



Illus. 1 Using of ThinPrint .print with server and client components

Server component

The **.print Engine** is the actual core of the ThinPrint .print framework. It performs the following main functions:

- Bandwidth control of print data
- Compression and streaming of print data
- Printer Virtualization Layer¹

The .print Engine is an integral part of the following products:

- .print Application Server Engine
- .print Server Engine
- .print RDP Engine²
- .print Desktop Engine²

For detailed information on software operation see the respective manual ([Page 11](#)).

¹ Formerly Driver Free Native Printing
² RDP version of .print Client WinCE only

Client component

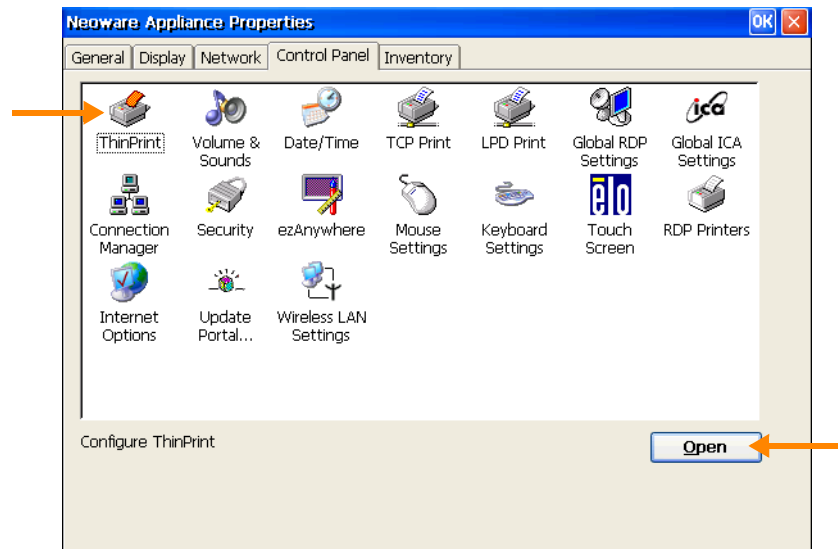
A software component on the client side, **.print Client**, is responsible for receiving print data, decompressing it, and sending it to the print devices. The following .print Clients are available for Windows CE:

- .print Client WinCE for ICA
- .print Client WinCE for RDP³
- .print Client WinCE for TCP/IP

With older thin client models a BIOS update could be necessary to install the .print Client WinCE.

.print Client installation

- Load .print Client into your CE device (tpcpe.exe and tpcpe.dll version 5.5.230 or later), if it is not already integrated in your device. Instructions can be found in the manual for your CE device.
- Change to the device setup (control panel) for your thin client (Illus. 2; with thin clients, this is often in the start menu with the F2 key)⁴.



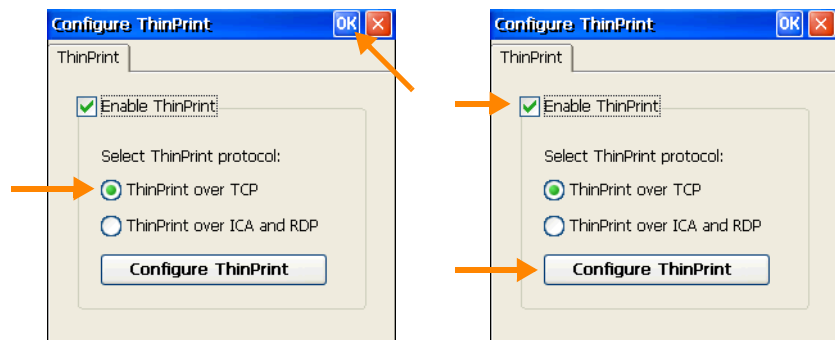
Illus. 2 .print Client WinCE in the control panel (example for Neoware terminals)

- 3 Under Windows CE 5.0 with RDP version 5.5, .print Client WinCE can only process print jobs from multiple terminal consecutively.
- 4 If you cannot find .print Client or ThinPrint Client in the device setup, please check www.thinprint.com (INFORMATION→ SUPPORTED DEVICES) to see whether your device is supported by ThinPrint .print.

.print Client configuration

Starting .print Client

- Start .print Client: either by running TPcCE.exe again or by activating .print Client in the device setup:
 - Open the control panel on the thin client and select THINPRINT (click OPEN, Illus. 2).
 - Enable .print Client (ENABLE THINPRINT in Illus. 3).
 - If necessary, select the print protocol: Click TCP/IP or ICA/RDP and confirm with OK.
 - Open the .print Client configuration menu (CONFIGURE THINPRINT; Illus. 3).



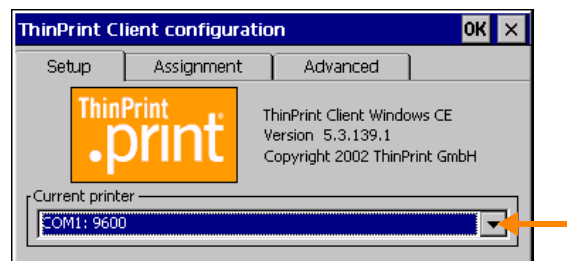
Illus. 3 Selecting and enabling .print Client WinCE and opening configuration menu (example for Neoware terminals)

Configuration

“Setup” tab

Current printer Select CURRENT PRINTER here (Illus. 4) – the .print default printer; immediately after installation a local printer port will be displayed as the current printer (*LPT1:* in Illus. 4). Print jobs are sent to the current printer if the printer ID can't be determined (e.g., no ID is given in the printer name on the server or a virtual desktop).

When running .print AutoConnect, current printer can also be set at the server or a virtual desktop by checking the option DEFAULT AT SERVER (Illus. 5).



Illus. 4 Selecting the .print default printer

“Assignment” tab*Printer names*

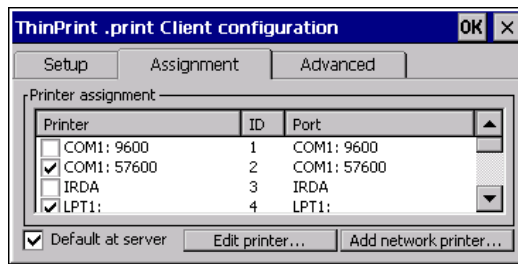
If printer names haven't been edited yet, the printers have the same name as their ports. Default port names are (poss. marked with bit rate):

- LPT1:
- COM1:

Changing the printer names is recommended (using EDIT PRINTER; Illus. 5).

Printers and their IDs

ASSIGNMENT lists available printers with their IDs (Illus. 5).



Illus. 5 ID assignment to printers over interfaces

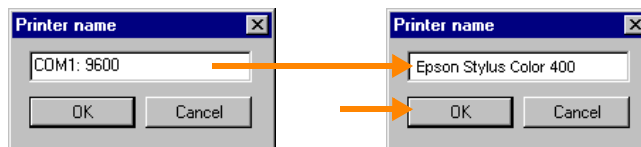
The ASSIGNMENT panel displays information about available printers. This is also where you find printer IDs, which are necessary for printer names on the .print Engine (see the manual of your .print Engine; [Page 11](#)).

.print AutoConnect

It's also possible to select different printers by checking the box next to them. .print AutoConnect will automatically create all selected printers on the server or a virtual desktop – provided templates exist and .print AutoConnect is running on the server or a virtual desktop (auto-created printers). For more info please refer to Chapter .print AutoConnect in your .print Engine manual; [Page 11](#).

Printers on local interfaces

Clicking EDIT PRINTER (Illus. 5) opens a panel in which printer names can be changed (Illus. 6).



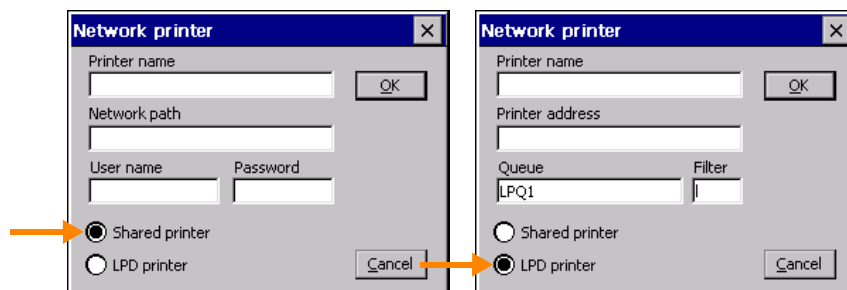
Illus. 6 Enter printer name

- Confirm your entry with OK.

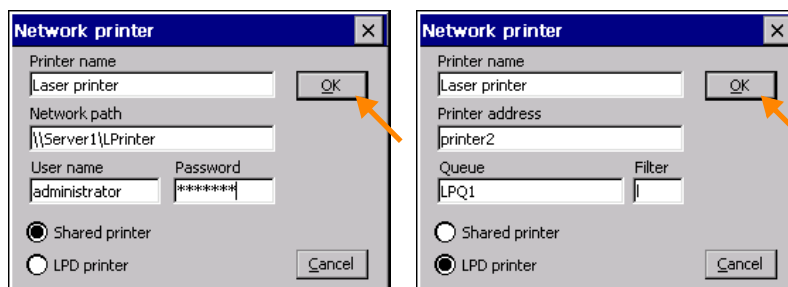
Network printers

Another category includes LPD devices and printers that are shared on another Windows computer in the network. Clicking ADD NETWORK PRINTER (Illus. 5) opens a new window.

- First, specify whether you want to print with a share (SHARED PRINTER in Illus. 7) or to the internal or external print server of a network printer (LPD PRINTER in Illus. 7).
- Next, enter in the top field any PRINTER NAME. Under that, enter the NETWORK PATH to the share or the NETWORK ADDRESS of the LPD device.
- If only certain users are to be allowed to use the share, you must enter a USER NAME and PASSWORD.
- If you are printing to a print server to which multiple network printers are connected, you must enter the name of the printer QUEUE to identify the specific printers (examples: lp0, lpq1). Find the queue name in the documentation for your LPD device. For LPD printing see also [Page 9](#).
It is normally not necessary to enter a FILTER – only if a filter is also used on the server.
- Confirm your entries with OK (Illus. 8). A printer is created with the new name.



Illus. 7 Enter network printer



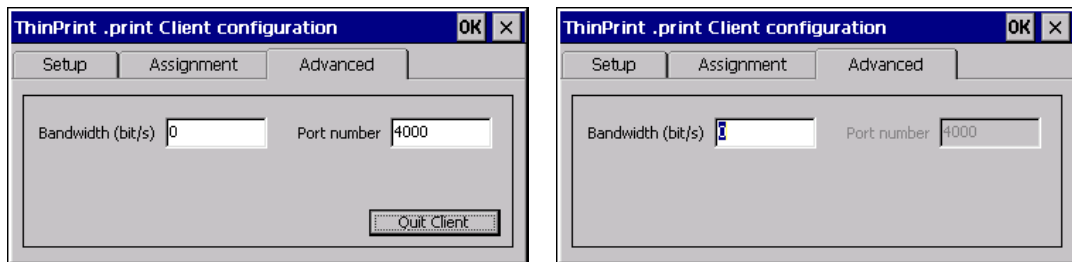
Illus. 8 Network printer entered (example)

“Advanced” tab

ADVANCED offers the following settings:

- Bandwidth* – Enter a bandwidth value which is the same or smaller than that set in .print Engine. If the value is larger or if Client Control is disabled at the server or the virtual desktop, server setting is applied. Enter **0** to retain server settings.
- Port number* – Enter here the TCP port number where .print Client should receive incoming connections. Be sure that the TCP/IP port number is the same on both .print Client and server-side .print Engine. Otherwise, communication between the two .print components is impossible.
Note: TCP Port number is of course only relevant for printing over TCP/IP with the TCP/IP version of .print Client WinCE (see also Illus. 3). The default port number is 4000.

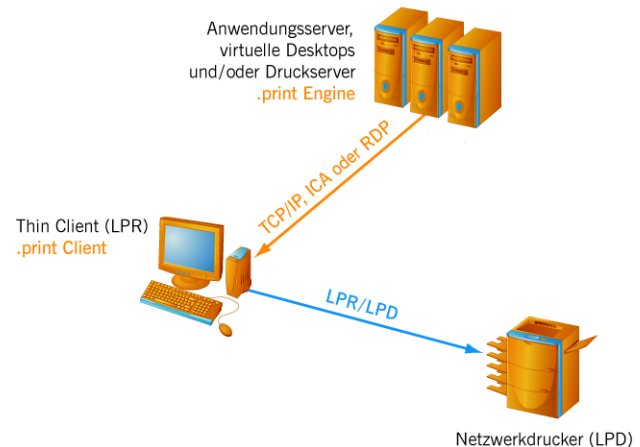
- OK** Changes are applied without quitting .print Client. Some changes could first be effective after restarting .print Clients.
- Close (X)** Previous settings remain intact.
- QUIT CLIENT** Quits .print Client. (.print Client must be restarted before ThinPrint .print printing resumes).



Illus. 9 ADVANCED tab: On the left in the TCP/IP version of .print Client and on the right in the ICA or RDP version

Preparing .print Engine for LPD printing

Windows CE clients are capable of sending print jobs to LPD devices. The new .print Client Win CE is installed on the CE client (thin client, PDA, smart phone, or mobile telephone) and can then receive .print print jobs and send them directly to internal or external print servers of network printers. All .print Clients WinCE support LPD printing in version 5.5 and later.



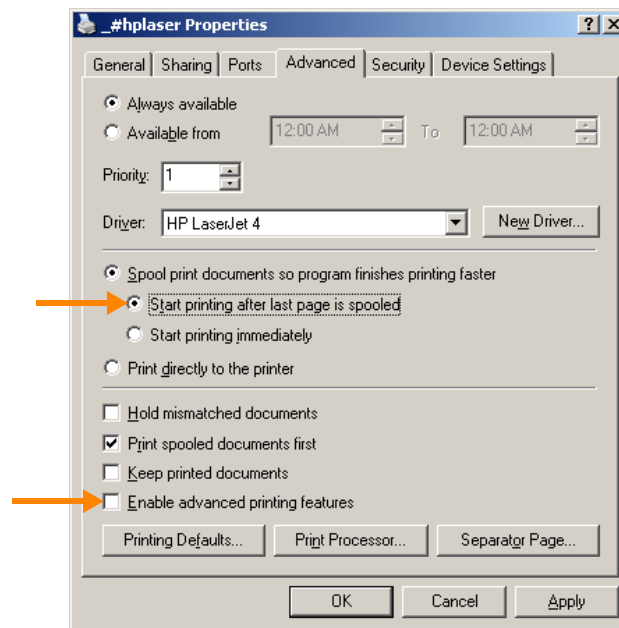
Illus. 10 LPD printing via Windows CE clients

Preparing .print Engine under Windows:

Various LPD devices expect the job length before accepting a print job. To calculate this the print jobs have to be spooled completely before transmitting to the printer.

This can be done on the server (or virtual desktop) as well on the thin client. We recommend the spooling on the server; to do so ...

- Select TCP/IP, VIRTUAL CHANNEL PROTOCOL (ICA OR RDP), OR USE VIRTUAL CHANNEL GATEWAY as print protocol in the .print Engine port configuration (see the respective .print Engine manual).
- Make sure that the printers completely spool the print data on the hard drive before sending. To do so, select GENERAL under PRINTER PROPERTIES (Illus. 11).
- Select START PRINTING AFTER LAST PAGE IS SPOOLED.
- Disable the ADVANCED PRINTING FEATURES.



Illus. 11 Preferences for client-side LPD printing on a Windows server

Appendix

Customer service and technical support

Customer Service www.thinprint.com/ → SUPPORT & SERVICES
support@thinprint.com

.print Client uninstallation

- Delete the file:
 tpcce.exe and tpcce.dll
- And delete the registry key:
 hkey_current_user\software\thinprint\tpcce

Additional sources

Further information about ThinPrint .print can be downloaded from our website.

Manuals For example, the following manuals are available at www.thinprint.com/ → FIND PRODUCT → <product name> → MANUAL(S):

- .print Application Server Engine
- .print Server Engine
- .print RDP Engine
- .print Desktop Engine
- .print Client user manuals

White papers At www.thinprint.com/ → FIND PRODUCT → <product name> → WHITE PAPER(S) you will find a few additional documents (white papers), including:

- Licensing
- .print AutoConnect and .print Virtual Channel Gateway
- Support information

.print Clients and supported features

.print Client	Network protocol			.print AutoConnect	Compression and streaming	Bandwidth control	SSL/TLS encryption	Output Gateway	.print Viewture	Virtual Channel Gateway	Connection Service
	ICA	TCP/IP	RDP								
Windows (TCP/IP) ^a	-	+	-	+	+	+	+	+	+	-	+
Windows (ICA)	+	-	-	+	+	+	+	+	+	+	-
Windows (RDP) ^b	-	-	+	+	+	+	+	+	+	+	-
Service Windows (TCP/IP) ^a	-	+	-	+	+	+	+	+	-	-	+
ActiveX Windows (TCP/IP) ^a	-	+	-	+	+	+	+	+	+	-	+
Linux (TCP/IP) ^a	-	+	-	+	+	+	+	-	-	-	+
Linux (RDP)	-	-	+	+	+	+	+	-	-	+	-
Java (TCP/IP) ^a	-	+	-	+	+	+	+	-	-	-	+
Java as an applet (ICA)	+	-	-	+	+	+	+	-	-	+	-
Win16 (TCP/IP) ^a	-	+	-	+	+	+	-	-	-	-	-
Win OS/2 (TCP/IP)	-	+	-	+	+	+	-	-	-	-	-
MS-DOS (TCP/IP) ^a	-	+	-	+	+	+	-	-	-	-	-
Windows CE (TCP/IP) ^a	-	+	-	+	+	+	-	-	-	-	-
Windows CE (ICA)	+	-	-	+	+	+	-	-	-	+	-
Windows CE (RDP)	-	-	+	+	+	+	-	-	-	+	-
Windows Mobile (TCP/IP) ^a	-	+	-	+	+	+	-	-	-	-	-
Windows Mobile (ICA)	+	-	-	+	+	+	-	-	-	-	-
Windows Mobile (RDP)	-	-	+	+	+	+	-	-	-	-	-
ActiveX Windows Mobile (TCP/IP) ^a	-	+	-	+	+	+	-	-	-	-	+
LPD device	-	+	-	-	+ ^c	+	-	-	-	-	-

a Also usable for ICA/RDP sessions, provided a TCP/IP connection exists between server and client

b RDP 5.0 required

c If a decompression filter can be installed