

.print Client Win16

Manual

ThinPrint AG
Alt-Moabit 91 a/b
10559 Berlin
Germany/Alemania

ThinPrint Pty. Ltd.
L 10, 275 Alfred Street
North Sydney/NSW/2060
Australia

ThinPrint, Inc.
20006 Detroit Road, Suite 303
Cleveland, OH 44116
USA/EEUU

ThinPrint, Inc.
7600 Grandview Avenue, Suite 200
Denver, Colorado 80002
USA/EEUU



E-mail: info@thinprint.com
Web: www.thinprint.com
Issued: August 12, 2009 (v03)

© Copyright

This document is the intellectual property of ThinPrint AG. This document may be copied in whole or in part, provided this Copyright notice is included in every copy.

® Registered trade marks

All hardware and software names mentioned in this document are the registered trademarks of their respective companies or should be regarded as such.

Safety warning

All ThinPrint products are pure software solutions. Please note the safety warnings in the technical documentation from your hardware vendor and from the manufacturer of each device and component. Before beginning installation, we recommend closing all windows and applications and deactivating any virus scanner.

How to use this manual

The following conventions are used throughout this manual to represent recurring actions and text types.

Conventions

Note!	Important tip, explanation, exception
SMALL CAPS	Menu, command, dialog panel, option
<i>Italic</i> "Name"	Proper name, emphasis, variable
Courier	Keyboard input
→	Consecutive menu or command
■	Enumeration, head note
Example	Example
–	Procedural steps
1.	
2.	
Page 5	Links
www.thinprint.com	

.print Client for Windows 16 bit (OS/2)	4
Installation of the .print Client for Windows 16 bit (OS/2)	4
.print Client uninstallation	5
Configuration of the .print Client for Windows 16 bit (OS/2)	5
.print Clients and supported features	8

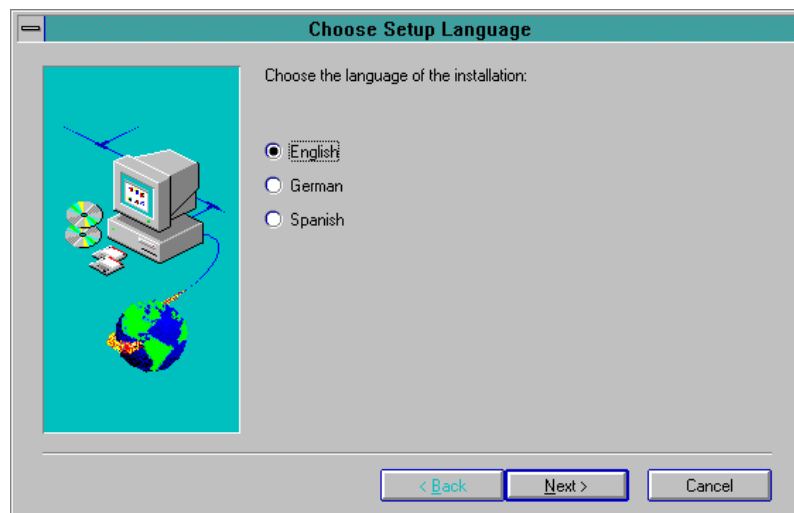
.print Client for Windows 16 bit (OS/2)

Tip! .print Client for Windows 16 bit (Win16) is intended solely for TCP/IP connections. Client files: ThnCInt.exe and TPCInt16.dll.

Tip! .print Client for WinOS/2 is available by request. It is configured the same as a .print Client Win16.

Installation of the .print Client for Windows 16 bit (OS/2)

1. Start the installation program *Setup.exe*.



Illus. 1 .print Client for Windows 16 bit installation

2. Choose the language you want (Illus. 1) and click NEXT.
3. Read the License Agreement carefully and accept its terms by clicking NEXT.
4. Confirm the next info panel with Next to begin data transmission.
5. In the final panel, you can end installation and restart Windows by clicking OK.



Tip! An icon is displayed on the desktop when .print Client is running.

.print Client uninstallation

Uninstall .print client as follows:

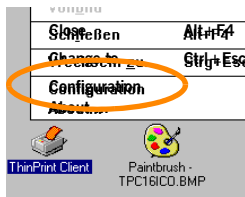
- Select UNINSTALLSHIELD from the ThinPrint program folder (Illus. 2).



Illus. 2 .print Client Uninstallation

Configuration of the .print Client for Windows 16 bit (OS/2)

Starting ThinPrint Client Manager



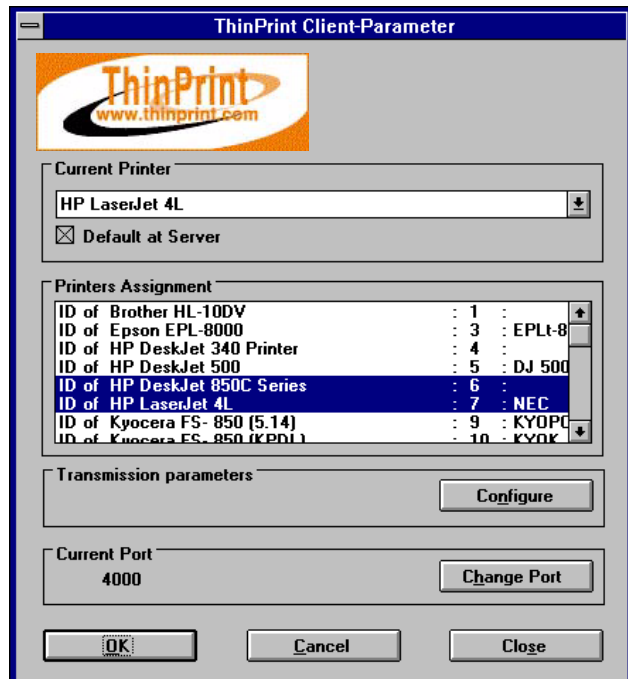
Illus. 3 Starting ThinPrint Client Manager

.print Client is configured with ThinPrint Client Manager.

- Open *ThinPrint Client Manager* by clicking its icon in on the desktop and choosing CONFIGURATION (Illus. 3).

The ThinPrint Client Manager appears:

Illus. 4 ThinPrint Client Manager for Windows 16 bit



Current printer

Select *current printer* here (Illus. 4). Print jobs are produced over the current printer if the printer ID can't be determined (e.g., no ID is given in the printer name). When running TPAutoConnect, current printer can also be set at the server by checking the option DEFAULT AT SERVER.

Printers and their IDs The PRINTER ASSIGNMENT panel displays information about available printers. This is also where you find printer IDs, which are necessary for printer names on the .print Engine (see the *.print Server Engine for Terminal Services Manual*).

TPAutoConnect It's also possible to select different printers by marking them. TPAutoConnect will automatically create all selected printers on the server and connect them with the ThinPrint Port – provided templates exist and TPAutoConnect is running on the server (Autocreated Printers). For more info please refer to Chapter *TPAutoConnect* in the *.print Server Engine for Terminal Services Manual*.

Current port – Enter via CHANGE PORT the port number where .print Client should receive incoming connections. Be sure that the TCP/IP port number is the same on both .print Client and .print Engine. Otherwise, communication between the two .print components is impossible.
Note: The default port number is 4000.

Printer class – Double clicking a printer name opens an input box for determining printer class:

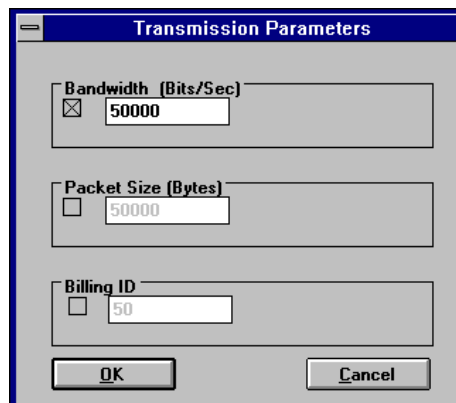
Illus. 5 Enter printer class (example: DeskJet – see Chapter *TPAutoConnect* in the *.print Server Engine for Terminal Services Manual*)



Tip! Unlike printer names, class names may not be longer than 7 characters, and may not include blank spaces.

Bandwidth Clicking Button CONFIGURE (Illus. 4) accesses the bandwidth setting:

Illus. 6 ThinPrint Client Manager for Windows 16 bit: Bandwidth



- Check this box and enter a bandwidth value which is the same or smaller than that set in the .print Engine. If the value is larger or if Client Control is disabled at the server, server settings are applied.
The functions PACKET SIZE and BILLING ID are disabled in the current version of ThinPrint .print.

OK – Changes are applied without quitting .print Client.

CANCEL – Previous settings remain intact.

CLOSE – Quits .print Client.
(.print Client must be restarted before printing resumes).

.print Clients and supported features

.print Client	Network protocol			.print AutoConnect	Compression and streaming	Bandwidth control	SSL/TLS encryption	Output Gateway	.print Viewture	Virtual Channel Gateway	Connection Service
	ICA	TCP/IP	RDP								
Windows (TCP/IP) ^a	-	+	-	+	+	+	+	+	+	-	+
Windows (ICA)	+	-	-	+	+	+	+	+	+	+	-
Windows (RDP) ^b	-	-	+	+	+	+	+	+	+	+	-
Service Windows (TCP/IP) ^a	-	+	-	+	+	+	+	+	-	-	+
ActiveX Windows (TCP/IP) ^a	-	+	-	+	+	+	+	+	+	-	+
Linux (TCP/IP) ^a	-	+	-	+	+	+	+	-	-	-	+
Linux (RDP)	-	-	+	+	+	+	+	-	-	+	-
Java (TCP/IP) ^a	-	+	-	+	+	+	+	-	-	-	+
Java as an applet (ICA)	+	-	-	+	+	+	+	-	-	+	-
Win16 (TCP/IP) ^a	-	+	-	+	+	+	-	-	-	-	-
Win OS/2 (TCP/IP)	-	+	-	+	+	+	-	-	-	-	-
MS-DOS (TCP/IP) ^a	-	+	-	+	+	+	-	-	-	-	-
Windows CE (TCP/IP) ^a	-	+	-	+	+	+	-	-	-	-	-
Windows CE (ICA)	+	-	-	+	+	+	-	-	-	+	-
Windows CE (RDP)	-	-	+	+	+	+	-	-	-	+	-
Windows Mobile (TCP/IP) ^a	-	+	-	+	+	+	-	-	-	-	-
Windows Mobile (ICA)	+	-	-	+	+	+	-	-	-	-	-
Windows Mobile (RDP)	-	-	+	+	+	+	-	-	-	-	-
ActiveX Windows Mobile (TCP/IP) ^a	-	+	-	+	+	+	-	-	-	-	+
LPD device	-	+	-	-	+ ^c	+	-	-	-	-	-

a Also usable for ICA/RDP sessions, provided a TCP/IP connection exists between server and client

b RDP 5.0 required

c If a decompression filter can be installed